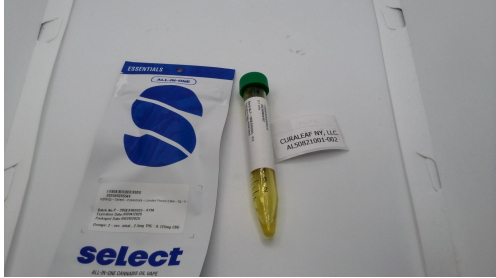




# Certificate of Analysis

## FOR COMPLIANCE

## PASSED



**Batch #:** P-2BQES902025-913A  
**Harvest Date:** 08/20/25  
**Production Method:** CO2  
**Total Amount:** 2000 units  
**Retail Product Size:** 2 gram  
**Retail Serving Size:** 0.00278  
**Servings:** 719.42446  
**Seed To Sale #:** 202508205544

**Lab ID:** AL50821001-002  
**Ordered:** 08/20/25  
**Sampled Date:** 08/21/25  
**Sample Collection Time:** 02:00 PM  
**Sampling End:** 03:30 PM  
**Sampling Method:** SOP.T.20.010.NY  
**Sample Size:** 10.4 gram  
**Completed:** 08/25/25

### Curaleaf NY, LLC.

167 Coeymans Industrial Park Lane  
Ravena, NY, 12143, US  
License # : MM1001M



### SAFETY RESULTS

### MISC.

  
Pesticide  
**PASSED**

  
Heavy Metals  
**PASSED**

  
Microbial  
**PASSED**

  
Mycotoxins  
**PASSED**

  
Solvents  
**PASSED**

  
Filtr/Foreign  
Material  
**NOT TESTED**

  
Water Activity  
**NOT TESTED**

  
Moisture  
Content  
**NOT TESTED**

  
Vitamin E  
**NOT TESTED**

  
Terpenes  
**PASSED**



## Cannabinoid

**PASSED**



**Total THC**  
**84.9759%**  
Total THC/Container : 1699.5174 mg



**Total CBD**  
**0.1879%**  
Total CBD/Container : 3.7587 mg



**Total Cannabinoids**  
**88.8425%**  
Total Cannabinoids/Container :  
1776.8492 mg

	(6AR,9R) D10-THC	(6AR,9S) D10-THC	CBC	CBD	CBDA	CBDV	CBG	D8-THC	CBGA	CBN	D9-THC	THCA	THCV
%	<0.1	<0.1	1.0443	0.1879	<0.1	<0.1	1.7580	<0.1	<0.1	0.4411	84.9759	<0.1	0.4353
mg/unit	<2	<2	20.8863	3.7587	<2	<2	35.1601	<2	<2	8.8213	1699.5174	<2	8.7053
LOD													
LOQ	0.1	0.1	0.1	0.1	0.1	0.1	0.1	0.1	0.1	0.1	0.1	0.1	0.1
Qualifier	%	%	%	%	%	%	%	%	%	%	%	%	%

Weight:  
0.1724g

Analysis Method : SOP.T.30.031.NY, SOP.T.40.031.NY  
Analyzed Date : 08/22/25 11:28:47

This Kaycha Labs Certification shall not be reproduced, unless in its entirety, without written approval from Kaycha Labs. The results relate only to the material or product analyzed. ND=Not Detected, ppm=Parts Per Million, ppb=Parts Per Billion, RSD=Relative Standard Deviation. Limit of Detection (LOD) and Limit Of Quantitation (LOQ) are terms used to describe the smallest concentration that can be detected and reliably measured by an analytical procedure, respectively. Action Levels are State determined thresholds based on 9 New York Codes, Rules and Regulations (NYCRR) Part 130 and Cannabis Law. The Measurement of Uncertainty (MU) error is available from the lab upon request. The "Decision Rule" for pass/fail does not include the MU. Any calculated totals may contain rounding errors.

**Erica Troy**  
Lab Director

State License # OCM-  
CPL-2022-00006  
ISO 17025 Accreditation #  
97164



Signature  
08/25/25



# Certificate of Analysis

Curaleaf NY, LLC.

167 Coeymans Industrial Park Lane  
Ravena, NY, 12143, US  
License #: MM1001M

Sample: AL50821001-002

Batch #: P-2BQES902025-913A  
Seed to sale: 202508205544

Ordered: 08/20/25  
Sampled: 08/21/25  
Completed: 08/25/25

**PASSED**



## Label Claim Verification

**PASSED**

ANALYTES	UNIT	LOD	LOQ	LIMIT	PASS/FAIL	RESULT	QUALIFIER
----------	------	-----	-----	-------	-----------	--------	-----------

Weight:

Analysis Method : N/A

Analyzed Date : 08/22/25 15:07:32



## Terpenes

**PASSED**

ANALYTES	LOD	LOQ	LIMIT	PASS/FAIL	RESULT (%)	(MG/UNIT)	QUALIFIER
TOTAL TERPENES	-1	0.1	10	PASS	4.4100	88.2000	
LIMONENE	-1	0.004	10	PASS	1.3900	27.8000	
BETA-MYRCENE	-1	0.004	10	PASS	1.0500	21.0000	
BETA-CARYOPHYLLENE	-1	0.004	10	PASS	0.5100	10.2000	
LINALOOL	-1	0.004	10	PASS	0.3800	7.6000	
ALPHA-PINENE	-1	0.004	10	PASS	0.2600	5.2000	
ALPHA-BISABOLOL	-1	0.004	10	PASS	0.2100	4.2000	
ALPHA-HUMULENE	-1	0.004	10	PASS	0.1500	3.0000	
BETA-PINENE	-1	0.004	10	PASS	0.1500	3.0000	
CAMPHENE	-1	0.004	10	PASS	0.0800	1.6000	
FENCHYL ALCOHOL	-1	0.004	10	PASS	0.0600	1.2000	
GUAIOL	-1	0.004	10	PASS	0.0400	0.8000	
ALPHA-PHELLANDRENE	-1	0.004	10	PASS	0.0400	0.8000	
ALPHA TERPINEOL	-1	0.004	10	PASS	0.0300	0.6000	
TERPINOLENE	-1	0.004	10	PASS	0.0200	0.4000	
VALENCENE	-1	0.004	10	PASS	0.0200	0.4000	
CARYOPHYLLENE OXIDE	-1	0.004	10	PASS	0.0100	0.2000	
OCIMENE	-1	0.004	10	PASS	0.0100	0.2000	
FARNESENE	-1	0.1	10	PASS	<0.1	<2	
GERANIOL	-1	0.004	10	PASS	<0.004	<0.08	
MENTHOL	-1	0.004	10	PASS	<0.004	<0.08	
ALPHA-TERPINENE	-1	0.004	10	PASS	<0.004	<0.08	

Weight:

0.9913g

Analysis Method : SOP.T.30.064.NY, SOP.T.40.064.NY

Analyzed Date : 08/22/25 12:40:35



## Pesticide

**PASSED**

ANALYTES	UNIT	LOD	LOQ	LIMIT	PASS/FAIL	RESULT	QUALIFIER
PRALLETHRIN	ppm	-1	0.1	0.2	PASS	<0.1	
ACEQUINOCYL	ppm	-1	0.1	2	PASS	<0.1	
PYRETHRINS, TOTAL	ppm	-1	0.1	1	PASS	<0.1	
AZADIRACTIN	ppm	-1	0.1	1	PASS	<0.1	
INDOLE-3-BUTYRIC ACID	ppm	-1	0.1	1	PASS	<0.1	
MYCLOBUTANIL	ppm	-1	0.1	0.2	PASS	<0.1	
PIPERONYL BUTOXIDE	ppm	-1	0.1	2	PASS	<0.1	
ABAMECTIN B1A	ppm	-1	0.1	0.5	PASS	<0.1	
ACEPHATE	ppm	-1	0.1	0.4	PASS	<0.1	
ACETAMIPRID	ppm	-1	0.1	0.2	PASS	<0.1	
ALDICARB	ppm	-1	0.1	0.4	PASS	<0.1	
AZOXYSTROBIN	ppm	-1	0.1	0.2	PASS	<0.1	
CHLORMEQUAT CHLORIDE	ppm	-1	0.1	1	PASS	<0.1	

This Kaycha Labs Certification shall not be reproduced, unless in its entirety, without written approval from Kaycha Labs. The results relate only to the material or product analyzed. ND=Not Detected, ppm=Parts Per Million, ppb=Parts Per Billion, RSD=Relative Standard Deviation. Limit of Detection (LOD) and Limit Of Quantitation (LOQ) are terms used to describe the smallest concentration that can be detected and reliably measured by an analytical procedure, respectively. Action Levels are State determined thresholds based on 9 New York Codes, Rules and Regulations (NYCRR) Part 130 and Cannabis Law. The Measurement of Uncertainty (MU) error is available from the lab upon request. The "Decision Rule" for pass/fail does not include the MU. Any calculated totals may contain rounding errors.

**Erica Troy**

Lab Director



State License # OCM-CPL-2022-00006  
ISO 17025 Accreditation # 97164

Signature  
08/25/25



# Certificate of Analysis

**Curaleaf NY, LLC.**

167 Coeymans Industrial Park Lane  
Ravena, NY, 12143, US  
License #: MM1001M

**Sample: AL50821001-002**

**Batch #:** P-2BQES902025-913A  
**Seed to sale:** 202508205544

**Ordered:** 08/20/25  
**Sampled:** 08/21/25  
**Completed:** 08/25/25

**PASSED**

	<b>Pesticide</b>	<b>PASSED</b>
---	------------------	---------------

ANALYTES	UNIT	LOD	LOQ	LIMIT	PASS/FAIL	RESULT	QUALIFIER
BIFENAZATE	ppm	-1	0.1	0.2	PASS	<0.1	
BIFENTHRIN	ppm	-1	0.1	0.2	PASS	<0.1	
CARBARYL	ppm	-1	0.1	0.2	PASS	<0.1	
CHLORPYRIFOS	ppm	-1	0.1	0.2	PASS	<0.1	
COUMAPHOS	ppm	-1	0.1	1	PASS	<0.1	
DAMINOZIDE	ppm	-1	0.1	1	PASS	<0.1	
CARBOFURAN	ppm	-1	0.1	0.2	PASS	<0.1	
BOSCALID	ppm	-1	0.1	0.4	PASS	<0.1	
CHLORANTRANILIPROLE	ppm	-1	0.1	0.2	PASS	<0.1	
DIAZINON	ppm	-1	0.1	0.2	PASS	<0.1	
CLOFENTEZINE	ppm	-1	0.1	0.2	PASS	<0.1	
DICHLORVOS	ppm	-1	0.1	1	PASS	<0.1	
DIMETHOATE	ppm	-1	0.1	0.2	PASS	<0.1	
DIMETHOMORPH	ppm	-1	0.1	1	PASS	<0.1	
ETHOPROPHOS	ppm	-1	0.1	0.2	PASS	<0.1	
ETOFENPROX	ppm	-1	0.1	0.4	PASS	<0.1	
ETOXAZOLE	ppm	-1	0.1	0.2	PASS	<0.1	
FENHEXAMID	ppm	-1	0.1	1	PASS	<0.1	
FENOXYCARB	ppm	-1	0.1	0.2	PASS	<0.1	
FENPYROXIMATE	ppm	-1	0.1	0.4	PASS	<0.1	
FIPRONIL	ppm	-1	0.1	0.4	PASS	<0.1	
FLONICAMID	ppm	-1	0.1	1	PASS	<0.1	
FLUDIOXONIL	ppm	-1	0.1	0.4	PASS	<0.1	
HEXYTHIAZOX	ppm	-1	0.1	1	PASS	<0.1	
IMAZALIL	ppm	-1	0.1	0.2	PASS	<0.1	
IMIDACLOPRID	ppm	-1	0.1	0.4	PASS	<0.1	
KRESOXIM METHYL	ppm	-1	0.1	0.4	PASS	<0.1	
MALATHION	ppm	-1	0.1	0.2	PASS	<0.1	
METALAXYL	ppm	-1	0.1	0.2	PASS	<0.1	
METHIOCARB	ppm	-1	0.1	0.2	PASS	<0.1	
METHOMYL	ppm	-1	0.1	0.4	PASS	<0.1	
MEVINPHOS	ppm	-1	0.1	1	PASS	<0.1	
NALED	ppm	-1	0.1	0.5	PASS	<0.1	
OXAMYL	ppm	-1	0.1	1	PASS	<0.1	
PACLOBUTRAZOL	ppm	-1	0.1	0.4	PASS	<0.1	
PERMETHRIN	ppm	-1	0.1	0.2	PASS	<0.1	
PHOSMET	ppm	-1	0.1	0.2	PASS	<0.1	
PROPICONAZOLE	ppm	-1	0.1	0.4	PASS	<0.1	
PROPOXUR	ppm	-1	0.1	0.2	PASS	<0.1	
PYRIDABEN	ppm	-1	0.1	0.2	PASS	<0.1	
SPINETORAM, TOTAL	ppm	-1	0.1	1	PASS	<0.1	
SPINOSAD, TOTAL	ppm	-1	0.1	0.2	PASS	<0.1	
SPIROMESIFEN	ppm	-1	0.1	0.2	PASS	<0.1	
SPIROTETRAMAT	ppm	-1	0.1	0.2	PASS	<0.1	
SPIROXAMINE	ppm	-1	0.1	0.2	PASS	<0.1	
TEBUCONAZOLE	ppm	-1	0.1	0.4	PASS	<0.1	
THIACLOPRID	ppm	-1	0.1	0.2	PASS	<0.1	
THIAMETHOXAM	ppm	-1	0.1	0.2	PASS	<0.1	
TRIFLOXYSTROBIN	ppm	-1	0.1	0.2	PASS	<0.1	
CAPTAN	ppm	-1	0.1	1	PASS	<0.1	
CHLORDANE	ppm	-1	0.1	1	PASS	<0.1	
CHLORFENAPYR	ppm	-1	0.1	1	PASS	<0.1	
CYFLUTHRIN	ppm	-1	0.1	1	PASS	<0.1	
CYPERMETHRIN	ppm	-1	0.1	1	PASS	<0.1	
METHYL PARATHION	ppm	-1	0.1	0.2	PASS	<0.1	
MGK-264	ppm	-1	0.1	0.2	PASS	<0.1	

This Kaycha Labs Certification shall not be reproduced, unless in its entirety, without written approval from Kaycha Labs. The results relate only to the material or product analyzed. ND=Not Detected, ppm=Parts Per Million, ppb=Parts Per Billion, RSD=Relative Standard Deviation. Limit of Detection (LOD) and Limit Of Quantitation (LOQ) are terms used to describe the smallest concentration that can be detected and reliably measured by an analytical procedure, respectively. Action Levels are State determined thresholds based on 9 New York Codes, Rules and Regulations (NYCRR) Part 130 and Cannabis Law. The Measurement of Uncertainty (MU) error is available from the lab upon request. The "Decision Rule" for pass/fail does not include the MU. Any calculated totals may contain rounding errors.

**Erica Troy**  
Lab Director



State License # OCM-  
CPL-2022-00006  
ISO 17025 Accreditation #  
97164

Signature  
08/25/25



# Certificate of Analysis

Curaleaf NY, LLC.

167 Coeymans Industrial Park Lane  
Ravena, NY, 12143, US  
License #: MM1001M

Sample: AL50821001-002

Batch #: P-2BQES902025-913A  
Seed to sale: 202508205544

Ordered: 08/20/25  
Sampled: 08/21/25  
Completed: 08/25/25

**PASSED**



## Pesticide

PASSED


ANALYTES	UNIT	LOD	LOQ	LIMIT	PASS/FAIL	RESULT	QUALIFIER
PENTACHLORONITROBENZENE	ppm	-1	0.1	1	PASS	<0.1	

Weight:  
0.5136g

Analysis Method : SOP.T.40.104.NY, SOP.T30.104.NY and SOP.T.40.154.NY  
Analyzed Date : 08/25/25 07:22:51

Weight:  
0.5136g

Analysis Method : SOP.T.40.154.NY  
Analyzed Date : 08/22/25 14:43:00




## Residual Solvents

PASSED

ANALYTES	UNIT	LOD	LOQ	LIMIT	PASS/FAIL	RESULT	QUALIFIER
PENTANES, TOTAL	ppm	-1	125	5000	PASS	<125	
HEXANE, TOTAL	ppm	-1	125	290	PASS	<125	
1,1,1-TRICHLOROETHANE	ppm	-1	375	1500	PASS	<375	
DIMETHYL SULFOXIDE	ppm	-1	375	5000	PASS	<375	
1,1,1,2-TETRAFLUOROETHANE	ppm	-1	500	1000	PASS	<500	
XYLENES, TOTAL	ppm	-1	125	2170	PASS	<125	
BUTANES, TOTAL	ppm	-1	750	5000	PASS	<750	
PROPANE	ppm	-1	750	5000	PASS	<750	
1,2-DICHLOROETHANE	ppm	-1	1.25	5	PASS	<1.25	
METHANOL	ppm	-1	125	3000	PASS	<125	
ETHANOL	ppm	-1	125	5000	PASS	<125	
ETHYL ETHER	ppm	-1	125	5000	PASS	<125	
ACETONE	ppm	-1	125	5000	PASS	<125	
2-PROPANOL	ppm	-1	125	5000	PASS	<125	
ACETONITRILE	ppm	-1	125	410	PASS	<125	
DICHLOROMETHANE	ppm	-1	125	600	PASS	<125	
ETHYL ACETATE	ppm	-1	125	5000	PASS	<125	
BENZENE	ppm	-1	1.25	2	PASS	<1.25	
N-HEPTANE	ppm	-1	125	5000	PASS	<125	
TOLUENE	ppm	-1	125	890	PASS	<125	
CHLOROFORM	ppm	-1	1.25	60	PASS	<1.25	

Weight:  
0.0271g

Analysis Method : SOP.T.40.044.NY  
Analyzed Date : 08/25/25 08:07:39



## Microbial

PASSED

ANALYTES	UNIT	LOD	LOQ	LIMIT	PASS/FAIL	RESULT	QUALIFIER
TOTAL AEROBIC BACTERIA	CFU/g	-1	100	10000	PASS	<100	
TOTAL YEAST AND MOLD	CFU/g	-1	100	1000	PASS	<100	
ESCHERICHIA COLI/SHIGELLA SPP.		1	1	1	PASS	Not Present	
SALMONELLA SPECIES		1	1	1	PASS	Not Present	
ASPERGILLUS TERREUS		1	1	1	PASS	Not Present	
ASPERGILLUS NIGER		1	1	1	PASS	Not Present	
ASPERGILLUS FLAVUS		1	1	1	PASS	Not Present	

This Kaycha Labs Certification shall not be reproduced, unless in its entirety, without written approval from Kaycha Labs. The results relate only to the material or product analyzed. ND=Not Detected, ppm=Parts Per Million, ppb=Parts Per Billion, RSD=Relative Standard Deviation. Limit of Detection (LOD) and Limit Of Quantitation (LOQ) are terms used to describe the smallest concentration that can be detected and reliably measured by an analytical procedure, respectively. Action Levels are State determined thresholds based on 9 New York Codes, Rules and Regulations (NYCRR) Part 130 and Cannabis Law. The Measurement of Uncertainty (MU) error is available from the lab upon request. The "Decision Rule" for pass/fail does not include the MU. Any calculated totals may contain rounding errors.

**Erica Troy**  
Lab Director



State License # OCM-  
CPL-2022-00006  
ISO 17025 Accreditation #  
97164

Signature  
08/25/25



# Certificate of Analysis

**Curaleaf NY, LLC.**

167 Coeymans Industrial Park Lane  
Ravena, NY, 12143, US  
License #: MM1001M

**Sample: AL50821001-002**

**Batch #:** P-2BQES902025-913A  
**Seed to sale:** 202508205544

**Ordered:** 08/20/25  
**Sampled:** 08/21/25  
**Completed:** 08/25/25

**PASSED**



## Microbial

PASSED

ANALYTES	UNIT	LOD	LOQ	LIMIT	PASS/FAIL	RESULT	QUALIFIER
ASPERGILLUS FUMIGATUS		1	1	1	PASS	Not Present	

**Weight:**  
0.82g

**Analysis Method :** SOP.T.40.058A.NY, SOP.T.40.058B.NY, SOP.T.40.056C, SOP.T.40.209.NY  
**Analyzed Date :** 08/25/25 06:49:43



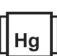
## Mycotoxins

PASSED

ANALYTES	UNIT	LOD	LOQ	LIMIT	PASS/FAIL	RESULT	QUALIFIER
TOTAL AFLATOXINS (B1, B2, G1, G2)	ppm	-1	0.01	0.02	PASS	<0.01	
AFLATOXIN G2	ppm	-1	0.01	0.02	PASS	<0.01	
AFLATOXIN G1	ppm	-1	0.01	0.02	PASS	<0.01	
AFLATOXIN B2	ppm	-1	0.01	0.02	PASS	<0.01	
AFLATOXIN B1	ppm	-1	0.01	0.02	PASS	<0.01	
OCHRATOXIN A+	ppm	-1	0.01	0.02	PASS	<0.01	

**Weight:**  
0.5136g

**Analysis Method :** SOP.T.30.104.NY, SOP.T.40.104.NY  
**Analyzed Date :** 08/25/25 06:47:36



## Heavy Metals

PASSED

ANALYTES	UNIT	LOD	LOQ	LIMIT	PASS/FAIL	RESULT	QUALIFIER
ANTIMONY	ug/g	-1	0.1	2	PASS	<0.1	
ARSENIC	ug/g	-1	0.1	0.2	PASS	<0.1	
CADMIUM	ug/g	-1	0.1	0.2	PASS	<0.1	
CHROMIUM	ug/g	-1	1	110	PASS	<1	
COPPER	ug/g	-1	1	30	PASS	<1	
LEAD	ug/g	-1	0.1	0.5	PASS	<0.1	
MERCURY	ug/g	-1	0.01	0.1	PASS	<0.01	
NICKEL	ug/g	-1	0.1	2	PASS	<0.1	

**Weight:**  
0.4517g

**Analysis Method :** SOP.T.30.084.NY, SOP.T.40.084.NY  
**Analyzed Date :** 08/22/25 13:01:45

This Kaycha Labs Certification shall not be reproduced, unless in its entirety, without written approval from Kaycha Labs. The results relate only to the material or product analyzed. ND=Not Detected, ppm=Parts Per Million, ppb=Parts Per Billion, RSD=Relative Standard Deviation. Limit of Detection (LOD) and Limit of Quantitation (LOQ) are terms used to describe the smallest concentration that can be detected and reliably measured by an analytical procedure, respectively. Action Levels are State determined thresholds based on 9 New York Codes, Rules and Regulations (NYCRR) Part 130 and Cannabis Law. The Measurement of Uncertainty (MU) error is available from the lab upon request. The "Decision Rule" for pass/fail does not include the MU. Any calculated totals may contain rounding errors.

**Erica Troy**  
Lab Director

State License # OCM-  
CPL-2022-00006  
ISO 17025 Accreditation #  
97164



Signature  
08/25/25