



Hudson Cannabis - Vapes c/o Hudson Valley Hemp Company, LLC
 Address: 67 Pine Wood Rd., Hudson, NY 12534
 Contact Name:
 Contact Phone:
 License #: OCM-PROC-24-000208
 Sample ID: 2502SMNY0086.0346



Phyto-Farma Labs
 a Smithers company

CERTIFICATE OF ANALYSIS
 Permit #: OCM-CPL-00004

Certificate: 8256.3

Cherry Kush 1g Vape

Lot #: HC-CK-A3125 Lot Size: 3000
 Sample ID: 2502SMNY0086.0346 Sample Type: Concentrate
 Regulatory Category: Adult Use Amount Received:
 Received: 02/04/2025 Sample Collected: 02/04/2025 10:38 AM
 Sampling Location: 67 PINE WOOD RD 1 Published: 02/19/2025
 Hudson, NY



COMPLIANCE FOR RETAIL

Cannabinoid Profile Pass	Terpenes Total Pass	Residual Solvents Pass	Pass Sample Status	
Pesticides Pass	Mycotoxins Pass	Water Activity Not Tested		67.9% Total THC
Trace Metals Pass	Microbial Contaminants Pass	Moisture Analysis Not Tested		0.156% Total CBD
	Filth & Foreign Not Tested			98.4 % Total Cannabinoids

Report Notes: Amended: Update cannabinoid profile results apropos retest request.
 Amended 2: Removed subsidiary results.

Alicia Caruso-Thomas
 Laboratory Director

02/19/2025
Alicia Caruso-Thomas

Phyto-Farma Labs
 49 John Hicks Drive
 Warwick, NY 10990
 (845) 202-9737



This is a Phyto-Farma certification that relates only to the material tested and shall not be reproduced, unless in its entirety, without written approval from Phyto-Farma. Test results are confidential, unless explicitly waived. All Pass/Fail results please reference state regulations released on 01FEB2024. Pass/Fail results do not use uncertainty, but is available upon request. The product represented has been tested by Phyto-Farma Labs using validated scientific methodologies. Note action levels are state determined thresholds for human safety and consumption. Acronym Definitions: ND - Not Detected, LOQ - Limit of Quantification, ULOQ - Upper Limit of Quantification; are terms used to describe the reliably measured smallest and largest concentrations. <LOQ> denotes the result is above detection limit, but below quantifiable limit. CFU - Colony Forming Units. Cannabis Product Sampling SOP# SOP.T.20.010.



Hudson Cannabis - Vapes c/o Hudson Valley Hemp Company, LLC
 Address: 67 Pine Wood Rd., Hudson, NY 12534
 Contact Name:
 Contact Phone:
 License #: OCM-PROC-24-000208
 Sample ID: 2502SMNY0086.0346



Phyto-Farma Labs
 a Smithers company

CERTIFICATE OF ANALYSIS

Permit #: OCM-CPL-00004

Certificate: 8256.3

Average Cannabinoid Profile

Pass

Sample Analysis

Date: 02/18/2025 05:28 PM

SOP: NY.SOPT.40.260

Analyzed By: HPLC

Sample Weight: N/A

Analyst: Stephanie Knapp

Analyte	LOQ (%)	Average % (w/w)	mg/serving	Homogeneity [†]
Total Tetrahydrocannabinol (THC)	-	67.9	3.39	
Tetrahydrocannabinolic acid (THCA)	0.500	<LOQ	<LOQ	
Δ8-THC	0.500	<LOQ	<LOQ	
Δ9-THC	0.500	67.9	3.39	
Δ10-THC-RS	0.500	<LOQ	<LOQ	
Δ10-THC-RR	0.500	<LOQ	<LOQ	
Total Cannabidiol (CBD)	-	0.156	0.00781	
Cannabinadiolic acid (CBDA)	0.500	0.178	0.00891	
Cannabidiol (CBD)	0.500	<LOQ	<LOQ	
Total Active Tetrahydrocannabivarin (THCV)	-	0.557	0.0279	
Tetrahydrocannabivarinic acid (THCVA)*	0.500	0.0958	0.00479	
Tetrahydrocannabivarin (THCV)	0.500	0.474	0.0237	
Total Active Cannabigerol (CBG)	-	4.56	0.228	
Cannabigerolic acid (CBGA)	0.500	<LOQ	<LOQ	
Cannabigerol (CBG)	0.500	4.56	0.228	
Cannabidivarin (CBDV)	0.500	<LOQ	<LOQ	
Cannabinol (CBN)	0.500	23.3	1.16	
Cannabichromene (CBC)	0.500	1.95	0.0974	

Cannabinoid Totals	Actual % (w/w)	mg/serving	Homogeneity [†]
Total Cannabinoids	98.4	4.92	

* Analyte is not included in ISO 17025 scope of accreditation

† Concentration of individual samples must be ±25% of the mean concentration

Total Active CBD = CBD + (0.877 x CBDA); Total Active CBG = CBG + (0.878 x CBGA);

Total Active THC = (Δ9THC + Δ8THC + Δ10THC-RS + Δ10THC-RR) + (0.877 x THCA);

Total Active THCV = THCV + (0.867 x THCVA);

Serving Weight: 0.005 g

Alicia Caruso-Thomas

02/19/2025

Alicia Caruso-Thomas

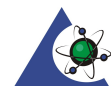
Laboratory Director

Phyto-Farma Labs

49 John Hicks Drive

Warwick, NY 10990

(845) 202-9737



Accreditation #: 121747

This is a Phyto-Farma certification that relates only to the material tested and shall not be reproduced, unless in its entirety, without written approval from Phyto-Farma. Test results are confidential, unless explicitly waived. All Pass/Fail results please reference state regulations released on 01FEB2024. Pass/Fail results do not use uncertainty, but is available upon request. The product represented has been tested by Phyto-Farma Labs using validated scientific methodologies. Note action levels are state determined thresholds for human safety and consumption. Acronym Definitions: ND - Not Detected, LOQ - Limit of Quantification, ULOQ - Upper Limit of Quantification; are terms used to describe the reliably measured smallest and largest concentrations. <LOQ* denotes the result is above detection limit, but below quantifiable limit. CFU - Colony Forming Units. Cannabis Product Sampling SOP# SOP.T.20.010.



Hudson Cannabis - Vapes c/o Hudson Valley Hemp Company, LLC
 Address: 67 Pine Wood Rd., Hudson, NY 12534
 Contact Name:
 Contact Phone:
 License #: OCM-PROC-24-000208
 Sample ID: 2502SMNY0086.0346



Phyto-Farma Labs
 a Smithers company

CERTIFICATE OF ANALYSIS

Permit #: OCM-CPL-00004

Certificate: 8256.3

Terpene Total

Pass (3.760%)

Sample Analysis

Date: 02/06/2025 02:07 PM

SOP: NY.SOPT.40.090

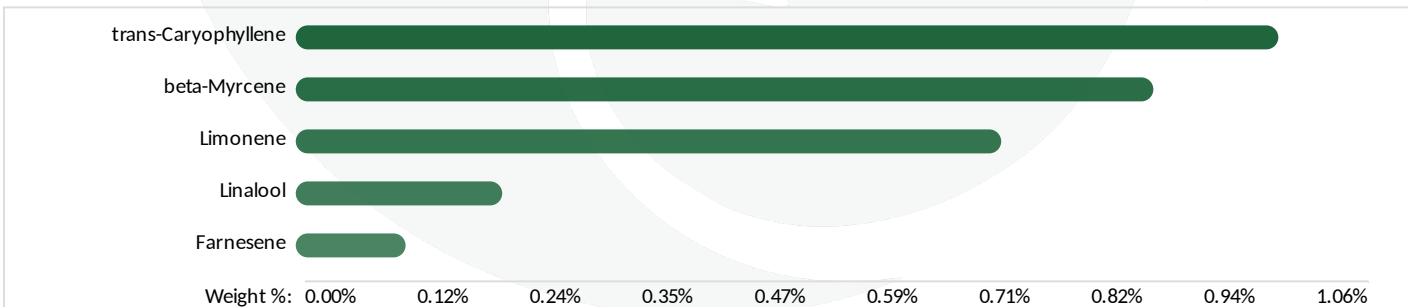
Sample Weight: 0.1585 g

Analyzed By: GC-MS

Analyst: Stephanie Knapp

Analyte	LOQ (%)	Results (%)	Analyte	LOQ (%)	Results (%)
3-Carene	0.0004200	0.003600	gamma-Terpinene	0.0004400	<LOQ
alpha-Bisabolol	0.0005000	0.03020	gamma-Terpineol	0.0003000	0.01290
alpha-Humulene	0.0005600	0.06720	Geraniol	0.0004800	<LOQ
alpha-Phellandrene	0.0006600	0.03330	Geranyl acetate	0.0006200	0.04520
alpha-Pinene	0.0004800	0.01890	Guaiaol	0.0006000	<LOQ
alpha-Terpinene	0.0002600	<LOQ	Isoborneol	0.0003400	0.05050
alpha-Terpineol	0.0003400	0.1160	Isopulegol	0.0006600	<LOQ
beta-Myrcene	0.0006400	0.9243	Limonene	0.0007400	0.7603
beta-Pinene	0.0006600	0.004400	Linalool	0.0004600	0.2225
Borneol	0.0004600	0.03750	Menthol	0.0004600	<LOQ
Camphene	0.0004400	<LOQ	Nerol	0.0005000	<LOQ
Camphor	0.0004000	<LOQ	Pulegone (+)	0.0005600	<LOQ
Caryophyllene oxide	0.0005800	0.03490	Sabinene	0.0003400	0.004400
Cedrene	0.0004400	<LOQ	Sabinene Hydrate	0.0004200	<LOQ
Cedrol	0.0005600	<LOQ	Terpinolene	0.0005000	<LOQ
cis-Nerolidol	0.0006800	<LOQ	trans-b-Ocimene	0.0004200	<LOQ
cis-Ocimene	0.0005200	<LOQ	trans-Caryophyllene	0.0006600	1.059
Eucalyptol	0.0007200	<LOQ	trans-Nerolidol	0.0007200	0.09730
Farnesene	0.0008400	0.1184	Valencene	0.0005600	0.01900
Fenchone	0.0005000	<LOQ			

Terpene Totals	%	Pass/Fail
Total Terpenes	3.760	PASS



Alicia Caruso-Thomas
 Laboratory Director

02/19/2025
Alicia Caruso-Thomas

Phyto-Farma Labs
 49 John Hicks Drive
 Warwick, NY 10990
 (845) 202-9737



This is a Phyto-Farma certification that relates only to the material tested and shall not be reproduced, unless in its entirety, without written approval from Phyto-Farma. Test results are confidential, unless explicitly waived. All Pass/Fail results please reference state regulations released on 01FEB2024. Pass/Fail results do not use uncertainty, but is available upon request. The product represented has been tested by Phyto-Farma Labs using validated scientific methodologies. Note action levels are state determined thresholds for human safety and consumption. Acronym Definitions: ND - Not Detected, LOQ - Limit of Quantification, ULOQ - Upper Limit of Quantification; are terms used to describe the reliably measured smallest and largest concentrations. <LOQ* denotes the result is above detection limit, but below quantifiable limit. CFU - Colony Forming Units. Cannabis Product Sampling SOP# SOP.20.010.



Hudson Cannabis - Vapes c/o Hudson Valley Hemp Company, LLC
 Address: 67 Pine Wood Rd., Hudson, NY 12534
 Contact Name:
 Contact Phone:
 License #: OCM-PROC-24-000208
 Sample ID: 2502SMNY0086.0346



Phyto-Farma Labs
 a Smithers company

CERTIFICATE OF ANALYSIS

Permit #: OCM-CPL-00004

Certificate: 8256.3

Trace Metals

Pass

Sample Analysis

Date: 02/10/2025 12:19 PM

SOP: NY.SOPT.40.050

Analyzed By: ICP-MS

Sample Weight: 0.1253 g

Analyst: Moni Kaneti

Analyte	LOQ (µg/g)	Action Limit (µg/g)	Results (µg/g)	Pass/Fail
Antimony (Sb)*	0.315	2.00	<LOQ	PASS
Arsenic (As)*	0.180	0.200	<LOQ	PASS
Cadmium (Cd)*	0.159	0.200	<LOQ	PASS
Chromium (Cr)*	0.891	110	<LOQ	PASS
Copper (Cu)*	0.984	30.0	<LOQ	PASS
Lead (Pb)*	0.195	0.500	<LOQ	PASS
Mercury (Hg)*	0.0330	0.100	<LOQ	PASS
Nickel (Ni)*	0.273	2.00	0.414	PASS

* Analyte is not included in ISO 17025 scope of accreditation

Mycotoxin Analysis

Pass

Sample Analysis

Date: 02/07/2025 10:22 AM

SOP: NY.SOPT.40.180

Analyzed By: LC-MS/MS

Sample Weight: 0.1 g

Analyst: Destiny Ribadeneyra

Analyte	LOQ (µg/g)	Action Limit (µg/g)	Results (µg/g)	Pass/Fail
Sum of Aflatoxins	-	0.020	0	PASS
Aflatoxin B1	0.0010	0.020	<LOQ	PASS
Aflatoxin B2	0.0020	0.020	<LOQ	PASS
Aflatoxin G1	0.0010	0.020	<LOQ	PASS
Aflatoxin G2	0.0020	0.020	<LOQ	PASS
Ochratoxin A	0.0020	0.020	<LOQ	PASS

Alicia Caruso-Thomas

02/19/2025

Alicia Caruso-Thomas

Laboratory Director

Phyto-Farma Labs

49 John Hicks Drive
 Warwick, NY 10990
 (845) 202-9737



Accreditation #: 121747

This is a Phyto-Farma certification that relates only to the material tested and shall not be reproduced, unless in its entirety, without written approval from Phyto-Farma. Test results are confidential, unless explicitly waived. All Pass/Fail results please reference state regulations released on 01FEB2024. Pass/Fail results do not use uncertainty, but is available upon request. The product represented has been tested by Phyto-Farma Labs using validated scientific methodologies. Note action levels are state determined thresholds for human safety and consumption. Acronym Definitions: ND - Not Detected, LOQ - Limit of Quantification, ULOQ - Upper Limit of Quantification; are terms used to describe the reliably measured smallest and largest concentrations. <LOQ* denotes the result is above detection limit, but below quantifiable limit. CFU - Colony Forming Units. Cannabis Product Sampling SOP# SOP.T.20.010.



Hudson Cannabis - Vapes c/o Hudson Valley Hemp Company, LLC
 Address: 67 Pine Wood Rd., Hudson, NY 12534
 Contact Name:
 Contact Phone:
 License #: OCM-PROC-24-000208
 Sample ID: 2502SMNY0086.0346



Phyto-Farma Labs
 a Smithers company

CERTIFICATE OF ANALYSIS

Permit #: OCM-CPL-00004

Certificate: 8256.3

Pesticides LC

Pass

Sample Analysis

Date: 02/06/2025 01:38 PM

SOP: NY.SOPT.040.270

Analyzed By: LC-MS/MS

Sample Weight: 1 g

Analyst: Destiny Ribadeneyra

Analyte	LOQ (ppm)	Action Limit (ppm)	Results (ppm)	Pass/Fail	Analyte	LOQ (ppm)	Action Limit (ppm)	Results (ppm)	Pass/Fail
Abamectin*	0.0180	0.500	<LOQ	PASS	Imidacloprid*	0.00800	0.400	<LOQ	PASS
Acephate*	0.00700	0.400	<LOQ	PASS	Indole-3-butyric acid*	0.00700	1.00	<LOQ	PASS
Acequinocyl*	0.0160	2.00	<LOQ	PASS	Kresoxim methyl*	0.0120	0.400	<LOQ	PASS
Acetamiprid*	0.00500	0.200	<LOQ	PASS	Malathion*	0.0110	0.200	<LOQ	PASS
Aldicarb*	0.00500	0.400	<LOQ	PASS	Metalaxyl*	0.0120	0.200	<LOQ	PASS
Azadirachtin*	0.0220	1.00	<LOQ	PASS	Methiocarb*	0.00400	0.200	<LOQ	PASS
Azoxystrobin*	0.00600	0.200	<LOQ	PASS	Methomyl*	0.0120	0.400	<LOQ	PASS
Bifenazate*	0.00600	0.200	<LOQ	PASS	Mevinphos*	0.0190	1.00	<LOQ	PASS
Bifenthrin*	0.00300	0.200	<LOQ	PASS	MGK-264*	0.0110	0.200	<LOQ	PASS
Boscalid*	0.0110	0.400	<LOQ	PASS	Myclobutanil*	0.0130	0.200	<LOQ	PASS
Carbaryl*	0.00600	0.200	<LOQ	PASS	Naled*	0.00500	0.500	<LOQ	PASS
Carbofuran*	0.00500	0.200	<LOQ	PASS	Oxamyl*	0.00800	1.00	<LOQ	PASS
Chlorantraniliprole*	0.00600	0.200	<LOQ	PASS	Paclobutrazol*	0.0150	0.400	<LOQ	PASS
Chloromequat chloride*	0.0190	1.00	<LOQ	PASS	Permethrins, Total*	0.00900	0.200	<LOQ	PASS
Chlorpyrifos*	0.00900	0.200	<LOQ	PASS	Phosmet*	0.00700	0.200	<LOQ	PASS
Clofentezine*	0.0100	0.200	<LOQ	PASS	Piperonyl Butoxide*	0.00600	2.00	<LOQ	PASS
Daminozide*	0.00400	1.00	<LOQ	PASS	Prallethrin*	0.00800	0.200	<LOQ	PASS
Diazinon*	0.00700	0.200	<LOQ	PASS	Propiconazole*	0.00600	0.400	<LOQ	PASS
Dichlorvos*	0.0120	1.00	<LOQ	PASS	Propoxur*	0.00800	0.200	<LOQ	PASS
Dimethoate*	0.00600	0.200	<LOQ	PASS	Pyrethrins*	0.0140	1.00	<LOQ	PASS
Dimethomorph*	0.00500	1.00	<LOQ	PASS	Pyridaben*	0.00600	0.200	<LOQ	PASS
Ethoprophos*	0.0130	0.200	<LOQ	PASS	Spinetoram, Total*	0.00500	1.00	<LOQ	PASS
Etofenprox*	0.00300	0.400	<LOQ	PASS	Spinosad, Total*	0.00600	0.200	<LOQ	PASS
Etoxazole*	0.00500	0.200	<LOQ	PASS	Spiromesifen*	0.0130	0.200	<LOQ	PASS
Fenhexamid*	0.0150	1.00	<LOQ	PASS	Spirotetramat*	0.00600	0.200	<LOQ	PASS
Fenoxycarb*	0.0110	0.200	<LOQ	PASS	Spiroxamine*	0.00400	0.200	<LOQ	PASS
Fenpyroximate*	0.00200	0.400	<LOQ	PASS	Tebuconazole*	0.0120	0.400	<LOQ	PASS
Fonicamid*	0.00700	1.00	<LOQ	PASS	Thiacloprid*	0.00800	0.200	<LOQ	PASS
Fludioxonil*	0.0170	0.400	<LOQ	PASS	Thiamethoxam*	0.00800	0.200	<LOQ	PASS
Hexythiazox*	0.00500	1.00	<LOQ	PASS					

* Analyte is not included in ISO 17025 scope of accreditation

Alicia Caruso-Thomas

02/19/2025

Alicia Caruso-Thomas

Laboratory Director

Phyto-Farma Labs

49 John Hicks Drive
 Warwick, NY 10990
 (845) 202-9737



Accreditation #: 121747

This is a Phyto-Farma certification that relates only to the material tested and shall not be reproduced, unless in its entirety, without written approval from Phyto-Farma. Test results are confidential, unless explicitly waived. All Pass/Fail results please reference state regulations released on 01FEB2024. Pass/Fail results do not use uncertainty, but is available upon request. The product represented has been tested by Phyto-Farma Labs using validated scientific methodologies. Note action levels are state determined thresholds for human safety and consumption. Acronym Definitions: ND - Not Detected, LOQ - Limit of Quantification, ULOQ - Upper Limit of Quantification; are terms used to describe the reliably measured smallest and largest concentrations. <LOQ* denotes the result is above detection limit, but below quantifiable limit. CFU - Colony Forming Units. Cannabis Product Sampling SOP# SOP.T.20.010.



Hudson Cannabis - Vapes c/o Hudson Valley Hemp Company, LLC
 Address: 67 Pine Wood Rd., Hudson, NY 12534
 Contact Name:
 Contact Phone:
 License #: OCM-PROC-24-000208
 Sample ID: 2502SMNY0086.0346



Phyto-Farma Labs
 a Smithers company

CERTIFICATE OF ANALYSIS

Permit #: OCM-CPL-00004

Certificate: 8256.3

Pesticides GC

Pass

Sample Analysis

Date: 02/07/2025 11:55 AM

SOP: NYS.SOPT.040.271

Analyzed By: GC-MS/MS

Sample Weight: N/A

Analyst: Destiny Ribadeneyra

Analyte	LOQ (ppm)	Action Limit (ppm)	Results (ppm)	Pass/Fail
Captan*	0.300	1.00	<LOQ	PASS
Chlordane*	0.0700	1.00	<LOQ	PASS
Chlorfenapyr*	0.100	1.00	<LOQ	PASS
Coumaphos*	0.190	1.00	<LOQ	PASS
Cyfluthrin*	0.110	1.00	<LOQ	PASS
Cypermethrin*	0.240	1.00	<LOQ	PASS
Fipronil*	0.170	0.400	<LOQ	PASS
Imazalil*	0.170	0.200	<LOQ	PASS
Methyl parathion*	0.0900	0.200	<LOQ	PASS
Pentachloronitrobenzene*	0.170	1.00	<LOQ	PASS
Trifloxystrobin*	0.110	0.200	<LOQ	PASS

* Analyte is not included in ISO 17025 scope of accreditation

Alicia Caruso-Thomas

02/19/2025

Alicia Caruso-Thomas

Laboratory Director

Phyto-Farma Labs

49 John Hicks Drive
 Warwick, NY 10990
 (845) 202-9737



Accreditation #: 121747

This is a Phyto-Farma certification that relates only to the material tested and shall not be reproduced, unless in its entirety, without written approval from Phyto-Farma. Test results are confidential, unless explicitly waived. All Pass/Fail results please reference state regulations released on 01FEB2024. Pass/Fail results do not use uncertainty, but is available upon request. The product represented has been tested by Phyto-Farma Labs using validated scientific methodologies. Note action levels are state determined thresholds for human safety and consumption. Acronym Definitions: ND - Not Detected, LOQ - Limit of Quantification, ULOQ - Upper Limit of Quantification; are terms used to describe the reliably measured smallest and largest concentrations. <LOQ* denotes the result is above detection limit, but below quantifiable limit. CFU - Colony Forming Units. Cannabis Product Sampling SOP# SOP.T.20.010.



Hudson Cannabis - Vapes c/o Hudson Valley Hemp Company, LLC
 Address: 67 Pine Wood Rd., Hudson, NY 12534
 Contact Name:
 Contact Phone:
 License #: OCM-PROC-24-000208
 Sample ID: 2502SMNY0086.0346



Phyto-Farma Labs
 a Smithers company

CERTIFICATE OF ANALYSIS

Permit #: OCM-CPL-00004

Certificate: 8256.3

Residual Solvents

Pass

Sample Analysis

Date: 02/06/2025 03:11 PM

SOP: NYS.SOPT.040.272

Analyzed By: GC-MS

Sample Weight: 0.0992 g

Analyst: Stephanie Knapp

Analyte	LOQ (ppm)	Action Limit (ppm)	Results (ppm)	Pass/Fail
1,2-Dichloroethane (Ethylene dichloride, Ethylene chloride)	0.100	5.00	<LOQ	PASS
2-Propanol (Isopropanol, Isopropyl alcohol)	125	5000	<LOQ	PASS
Acetone (2-Propanone)	125	5000	<LOQ	PASS
Acetonitrile	23.6	410	<LOQ	PASS
Benzene	0.100	2.00	<LOQ	PASS
Butanes, Total	62.5	5000	<LOQ	PASS
Chloroform	1.50	60.0	<LOQ	PASS
Dichloromethane (Methylene chloride)	15.0	600	<LOQ	PASS
Dimethyl sulfoxide (DMSO)	125	5000	<LOQ	PASS
Ethanol (Ethyl alcohol)	125	5000	<LOQ	PASS
Ethyl acetate (Acetic acid ethyl ester)	125	5000	<LOQ	PASS
Ethyl ether (Diethyl ether, 1,1'-Oxybisethane)	125	5000	<LOQ	PASS
Heptane (n-Heptane)	125	5000	<LOQ	PASS
Hexanes, Total	14.5	290	<LOQ	PASS
Methanol (Methyl alcohol)	75.1	3000	<LOQ	PASS
Pentanes, Total	195	5000	<LOQ	PASS
Propane	63.0	5000	<LOQ	PASS
Toluene (Methylbenzene)	22.3	890	<LOQ	PASS
Trichloroethane (1,1,1-)	37.6	1500	<LOQ	PASS
Tetrafluoroethane (1,1,1,2-) (HFC134a)*	10.0	1000	<LOQ	PASS
Xylenes, Total (ortho-, meta-, para-)	109	2170	<LOQ	PASS

* Analyte is not included in ISO 17025 scope of accreditation

Alicia Caruso-Thomas
 Laboratory Director

02/19/2025
Alicia Caruso-Thomas

Phyto-Farma Labs
 49 John Hicks Drive
 Warwick, NY 10990
 (845) 202-9737



This is a Phyto-Farma certification that relates only to the material tested and shall not be reproduced, unless in its entirety, without written approval from Phyto-Farma. Test results are confidential, unless explicitly waived. All Pass/Fail results please reference state regulations released on 01FEB2024. Pass/Fail results do not use uncertainty, but is available upon request. The product represented has been tested by Phyto-Farma Labs using validated scientific methodologies. Note action levels are state determined thresholds for human safety and consumption. Acronym Definitions: ND - Not Detected, LOQ - Limit of Quantification, ULOQ - Upper Limit of Quantification; are terms used to describe the reliably measured smallest and largest concentrations. <LOQ* denotes the result is above detection limit, but below quantifiable limit. CFU - Colony Forming Units. Cannabis Product Sampling SOP# SOP.T.20.010.



Hudson Cannabis - Vapes c/o Hudson Valley Hemp Company, LLC
 Address: 67 Pine Wood Rd., Hudson, NY 12534
 Contact Name:
 Contact Phone:
 License #: OCM-PROC-24-000208
 Sample ID: 2502SMNY0086.0346



Phyto-Farma Labs
 a Smithers company

CERTIFICATE OF ANALYSIS

Permit #: OCM-CPL-00004

Certificate: 8256.3

Microbial Impurities - MDG

Pass

Sample Analysis

Date: 02/07/2025 10:00 AM

SOP: NYS.SOPT.40.273

Analyzed By: PCR

Analyst: Kristy Lee

Analyte	Microbial Type	LOQ (CFU/g)	Allowable Limit	Results	Pass/Fail
Shiga toxin-producing Escherichia coli	Bacterial	1	Not Detected	Not Detected	PASS
Salmonella species	Bacterial	1	Not Detected	Not Detected	PASS
Aspergillus flavus	Fungal	1	Not Detected	Not Detected	PASS
Aspergillus niger	Fungal	1	Not Detected	Not Detected	PASS
Aspergillus terreus	Fungal	1	Not Detected	Not Detected	PASS
Aspergillus fumigatus	Fungal	1	Not Detected	Not Detected	PASS

Alicia Caruso-Thomas

02/19/2025

Alicia Caruso-Thomas

Laboratory Director

Phyto-Farma Labs

49 John Hicks Drive
 Warwick, NY 10990
 (845) 202-9737



Accreditation #: 121747

This is a Phyto-Farma certification that relates only to the material tested and shall not be reproduced, unless in its entirety, without written approval from Phyto-Farma. Test results are confidential, unless explicitly waived. All Pass/Fail results please reference state regulations released on 01FEB2024. Pass/Fail results do not use uncertainty, but is available upon request. The product represented has been tested by Phyto-Farma Labs using validated scientific methodologies. Note action levels are state determined thresholds for human safety and consumption. Acronym Definitions: ND - Not Detected, LOQ - Limit of Quantification, ULOQ - Upper Limit of Quantification; are terms used to describe the reliably measured smallest and largest concentrations. <LOQ> denotes the result is above detection limit, but below quantifiable limit. CFU - Colony Forming Units. Cannabis Product Sampling SOP# SOP.T.20.010.



Hudson Cannabis - Vapes c/o Hudson Valley Hemp Company, LLC
 Address: 67 Pine Wood Rd., Hudson, NY 12534
 Contact Name:
 Contact Phone:
 License #: OCM-PROC-24-000208
 Sample ID: 2502SMNY0086.0346



Phyto-Farma Labs
 a Smithers company

CERTIFICATE OF ANALYSIS

Permit #: OCM-CPL-00004

Certificate: 8256.3

Microbial Impurities - TAPC

Pass

Sample Analysis

Date: 02/05/2025 04:41 PM

SOP: NYS.SOPT.040.200

Analyzed By: Plating

Analyst: Kristy Lee

Analyte	LOQ (CFU/g)	Action Limit (CFU/g)	Results (CFU/g)	Pass/Fail
Total Aerobic Bacteria/CDP-TC	5	10000	10	PASS

Microbial Impurities - TYMC

Pass

Sample Analysis

Date: 02/07/2025 04:29 PM

SOP: NYS.SOPT.040.200

Analyzed By: Plating

Analyst: Kristy Lee

Analyte	LOQ (CFU/g)	Action Limit (CFU/g)	Results (CFU/g)	Pass/Fail
Total Yeast and Mold	5	1000	<LOQ	PASS
Mold Count	5	1000	<LOQ	PASS
Yeast Count	5	1000	<LOQ	PASS

Alicia Caruso-Thomas

02/19/2025

Alicia Caruso-Thomas

Laboratory Director

Phyto-Farma Labs

49 John Hicks Drive
 Warwick, NY 10990
 (845) 202-9737



Accreditation #: 121747

This is a Phyto-Farma certification that relates only to the material tested and shall not be reproduced, unless in its entirety, without written approval from Phyto-Farma. Test results are confidential, unless explicitly waived. All Pass/Fail results please reference state regulations released on 01FEB2024. Pass/Fail results do not use uncertainty, but is available upon request. The product represented has been tested by Phyto-Farma Labs using validated scientific methodologies. Note action levels are state determined thresholds for human safety and consumption. Acronym Definitions: ND - Not Detected, LOQ - Limit of Quantification, ULOQ - Upper Limit of Quantification; are terms used to describe the reliably measured smallest and largest concentrations. <LOQ* denotes the result is above detection limit, but below quantifiable limit. CFU - Colony Forming Units. Cannabis Product Sampling SOP# SOP.T.20.010.