



NWC NY 9, LLC dba Wyld  
 Address: support@wyldcanna.com  
 Contact Name: N/A  
 Contact Phone: N/A  
 License #: OCM-PROC-24-000097  
 Sample ID: 2601SMNY0048.0195  
 Metrc Tag: 1A41203000006B1000001919



**CERTIFICATE OF ANALYSIS**  
 Permit #: OCM-CPL-00004

Certificate: 14125.1

## WYLD - Strawberry 20:1 CBD:THC Gummies - 10mg - 10ct

Metrc Package ID: 1A41203000006B1000001919  
 Metrc Sample ID 1A41203000006B1000001920  
 Lot #: NY SB B25  
 Sample ID: 2601SMNY0048.0195  
 Regulatory Category: Adult Use  
 Sampling Location: support@wyldcanna.com

Sample Type: Edible  
 Sample Collected: 01/14/2026 05:04 PM  
 Lot Size: 6620  
 Amount Received: 4  
 Received: 01/15/2026  
 Published: 01/26/2026



## COMPLIANCE FOR RETAIL

|                                    |                                       |  |  |
|------------------------------------|---------------------------------------|--|--|
| Cannabinoid Profile<br><b>Pass</b> | Terpenes Total<br><b>Tested</b>       | Residual Solvents<br><b>Pass</b>       | <b>Pass</b><br>Sample Status<br><br><b>0.02446%</b><br>Total THC<br><br><b>0.5162%</b><br>Total CBD<br><br><b>0.5426 %</b><br>Total Cannabinoids |
| Pesticides<br><b>Pass</b>          | Mycotoxins<br><b>Pass</b>             | Water Activity<br><b>Pass</b>          |  |
| Trace Metals<br><b>Pass</b>        | Microbial Contaminants<br><b>Pass</b> | Moisture Analysis<br><b>Not Tested</b> |  |
|                                    | Filth & Foreign<br><b>Not Tested</b>  |  |  |
|                                    |                                       |  |  |
|                                    |                                       |  |  |

Report Notes: N/A

**Weston Owen**     01/26/2026  
 Laboratory Manager

*Weston Owen*

**Smithers CTS New York LLC**  
 49 John Hicks Drive  
 Warwick, NY 10990  
 (845) 202-9737



This is a Smithers CTS New York LLC certification that relates only to the material tested and shall not be reproduced, unless in its entirety, without written approval from Smithers CTS New York LLC. Test results are confidential, unless explicitly waived. Pass/Fail results do not use uncertainty, but is available upon request. The product represented has been tested by Smithers CTS New York LLC using validated scientific methodologies. Note action levels are state determined thresholds for human safety and consumption. Acronym Definitions: ND - Not Detected, LOQ - Limit of Quantification, ULOQ - Upper Limit of Quantification; are terms used to describe the reliably measured smallest and largest concentrations. <LOQ denotes the result is above detection limit, but below quantifiable limit. CFU - Colony Forming Units. Cannabis Product Sampling SOP# SOP.T.20.010.



NWC NY 9, LLC dba Wyld  
 Address: support@wyldcanna.com  
 Contact Name: N/A  
 Contact Phone: N/A  
 License #: OCM-PROC-24-000097  
 Sample ID: 2601SMNY0048.0195  
 Metrc Tag: 1A41203000006B1000001919



**CERTIFICATE OF ANALYSIS**  
 Permit #: OCM-CPL-00004

Certificate: 14125.1

## Average Cannabinoid Profile

Pass

### Sample Analysis

Date: 01/20/2026 04:58 PM

SOP: NY.SOPT.40.260

Analyzed By: HPLC

Sample Weight: N/A

Analyst: Stephanie Knapp

| Analyte                                    | LOQ (%)   | Average % (w/w) | mg/serving |
|--|-----------|-----------------|------------|
| Total Tetrahydrocannabinol (THC)           | -         | 0.02446         | 0.9784     |
| Tetrahydrocannabinolic acid (THCA)         | 0.0009718 | <LOQ            | <LOQ       |
| Δ8-THC                                     | 0.0009718 | <LOQ            | <LOQ       |
| Δ9-THC                                     | 0.0009718 | 0.02446         | 0.9784     |
| Δ10-THC-RS                                 | 0.0009718 | <LOQ            | <LOQ       |
| Δ10-THC-RR                                 | 0.0009718 | <LOQ            | <LOQ       |
| Total Cannabidiol (CBD)                    | -         | 0.5162          | 20.65      |
| Cannabidiolic acid (CBDA)                  | 0.0009718 | <LOQ            | <LOQ       |
| Cannabidiol (CBD)                          | 0.0009718 | 0.5162          | 20.65      |
| Total Active Tetrahydrocannabivarin (THCV) | -         | <LOQ            | <LOQ       |
| Tetrahydrocannabivarinic acid (THCVA)      | 0.0009718 | <LOQ            | <LOQ       |
| Δ9-THCV                                    | 0.0009718 | <LOQ            | <LOQ       |
| Total Active Cannabigerol (CBG)            | -         | <LOQ            | <LOQ       |
| Cannabigerolic acid (CBGA)                 | 0.0009718 | <LOQ            | <LOQ       |
| Cannabigerol (CBG)                         | 0.0009718 | <LOQ            | <LOQ       |
| Cannabidivarin (CBDV)                      | 0.0009718 | 0.001983        | 0.07932    |
| Cannabinol (CBN)                           | 0.0009718 | <LOQ            | <LOQ       |
| Cannabichromene (CBC)                      | 0.0009718 | <LOQ            | <LOQ       |

| Cannabinoid Totals | Average % (w/w) | mg/serving |
|--------------------|-----------------|------------|
| Total Cannabinoids | 0.5426          | 21.71      |

Total THC = THCa\*0.877 + Δ9-THC

Total CBD = CBDa\*0.877 + CBD

Total Cannabinoids = Sum of all analytes

Total Active CBD = CBD + (0.877 x CBDA); Total Active CBG = CBG + (0.878 x CBGA);

Total Active THC = (Δ9THC + Δ8THC + Δ10THC-RS + Δ10THC-RR) + (0.877 x THCA);

Total Active THCV = THCV + (0.867 x THCVA);

Serving Weight: 4 g; Servings/Package: 10

Weston Owen 01/26/2026

Laboratory Manager

*Weston Owen*

Smithers CTS New York LLC  
 49 John Hicks Drive  
 Warwick, NY 10990  
 (845) 202-9737



This is a Smithers CTS New York LLC certification that relates only to the material tested and shall not be reproduced, unless in its entirety, without written approval from Smithers CTS New York LLC. Test results are confidential, unless explicitly waived. Pass/Fail results do not use uncertainty, but is available upon request. The product represented has been tested by Smithers CTS New York LLC using validated scientific methodologies. Note action levels are state determined thresholds for human safety and consumption. Acronym Definitions: ND - Not Detected, LOQ - Limit of Quantification, ULOQ - Upper Limit of Quantification; are terms used to describe the reliably measured smallest and largest concentrations. <LOQ denotes the result is above detection limit, but below quantifiable limit. CFU - Colony Forming Units. Cannabis Product Sampling SOP# SOP.T.20.010.



NWC NY 9, LLC dba Wyld  
 Address: support@wyldcanna.com  
 Contact Name: N/A  
 Contact Phone: N/A  
 License #: OCM-PROC-24-000097  
 Sample ID: 2601SMNY0048.0195  
 Metrc Tag: 1A41203000006B1000001919



**CERTIFICATE OF ANALYSIS**  
 Permit #: OCM-CPL-00004

Certificate: 14125.1

## Terpene Total

Tested (0.0000%)

## Sample Analysis

Date: 01/21/2026 02:16 PM

SOP: NY.SOPT.40.090

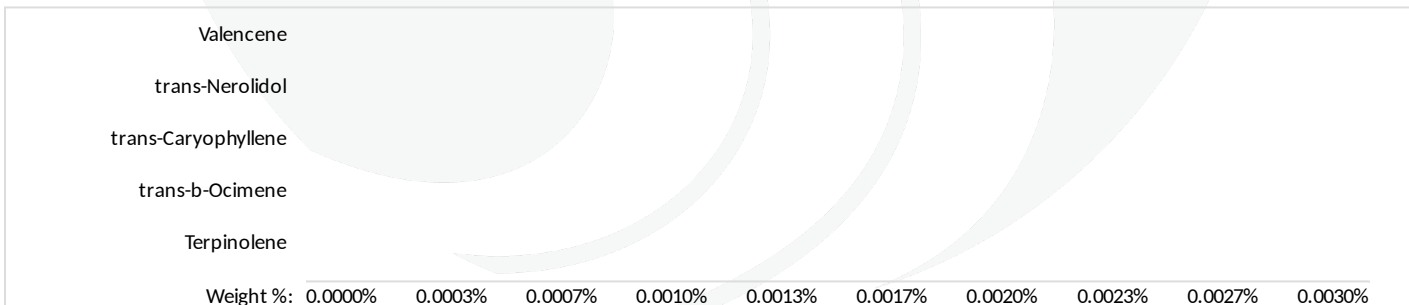
Sample Weight: 0.5477 g

Analyzed By: GC-MS

Analyst: Stephanie Knapp

| Analyte             | LOQ (%)   | Results (%) | Analyte             | LOQ (%)   | Results (%) |
|---------------------|-----------|-------------|---------------------|-----------|-------------|
| 3-Carene            | 0.0004200 | <LOQ        | Fenchol             | 0.0004000 | <LOQ        |
| alpha-Bisabolol     | 0.0005000 | <LOQ        | gamma-Terpinene     | 0.0004400 | <LOQ        |
| alpha-Humulene      | 0.0005600 | <LOQ        | gamma-Terpineol     | 0.0003000 | <LOQ        |
| alpha-Phellandrene  | 0.0006600 | <LOQ        | Geraniol            | 0.0004800 | <LOQ        |
| alpha-Pinene        | 0.0004800 | <LOQ        | Geranyl acetate     | 0.0006200 | <LOQ        |
| alpha-Terpinene     | 0.0002600 | <LOQ        | Guaiol              | 0.0006000 | <LOQ        |
| alpha-Terpineol     | 0.0003400 | <LOQ        | Isoborneol          | 0.0003400 | <LOQ        |
| beta-Myrcene        | 0.0006400 | <LOQ        | Isopulegol          | 0.0006600 | <LOQ        |
| beta-Pinene         | 0.0006600 | <LOQ        | Limonene            | 0.0007400 | <LOQ        |
| Borneol             | 0.0004600 | <LOQ        | Linalool            | 0.0004600 | <LOQ        |
| Camphene            | 0.0004400 | <LOQ        | Menthol             | 0.0004600 | <LOQ        |
| Camphor             | 0.0004000 | <LOQ        | Nerol               | 0.0005000 | <LOQ        |
| Caryophyllene oxide | 0.0005800 | <LOQ        | Pulegone (+)        | 0.0005600 | <LOQ        |
| Cedrene             | 0.0004400 | <LOQ        | Sabinene            | 0.0003400 | <LOQ        |
| Cedrol              | 0.0005600 | <LOQ        | Sabinene Hydrate    | 0.0004200 | <LOQ        |
| cis-Nerolidol       | 0.0006800 | <LOQ        | Terpinolene         | 0.0005000 | <LOQ        |
| cis-Ocimene         | 0.0005200 | <LOQ        | trans-b-Ocimene     | 0.0004200 | <LOQ        |
| Eucalyptol          | 0.0007200 | <LOQ        | trans-Caryophyllene | 0.0006600 | <LOQ        |
| Farnesene           | 0.0008400 | <LOQ        | trans-Nerolidol     | 0.0007200 | <LOQ        |
| Fenchone            | 0.0005000 | <LOQ        | Valencene           | 0.0005600 | <LOQ        |

| Terpene Totals | % | Pass/Fail |
|----------------|---|-----------|
| Total Terpenes | 0 | N/A       |



Weston Owen 01/26/2026  
 Laboratory Manager

*Weston Owen*

Smithers CTS New York LLC  
 49 John Hicks Drive  
 Warwick, NY 10990  
 (845) 202-9737



This is a Smithers CTS New York LLC certification that relates only to the material tested and shall not be reproduced, unless in its entirety, without written approval from Smithers CTS New York LLC. Test results are confidential, unless explicitly waived. Pass/Fail results do not use uncertainty, but is available upon request. The product represented has been tested by Smithers CTS New York LLC using validated scientific methodologies. Note action levels are state determined thresholds for human safety and consumption. Acronym Definitions: ND - Not Detected, LOQ - Limit of Quantification, ULOQ - Upper Limit of Quantification; are terms used to describe the reliably measured smallest and largest concentrations. <LOQ denotes the result is above detection limit, but below quantifiable limit. CFU - Colony Forming Units. Cannabis Product Sampling SOP# SOP.T.20.010.



NWC NY 9, LLC dba Wyld  
 Address: support@wyldcanna.com  
 Contact Name: N/A  
 Contact Phone: N/A  
 License #: OCM-PROC-24-000097  
 Sample ID: 2601SMNY0048.0195  
 Metrc Tag: 1A41203000006B1000001919



**CERTIFICATE OF ANALYSIS**  
 Permit #: OCM-CPL-00004

Certificate: 14125.1

## Residual Solvents

Pass

### Sample Analysis

Date: 01/20/2026 01:06 PM

SOP: NYS.SOPT.040.272

Analyzed By: GC-MS

Sample Weight: 0.097 g

Analyst: Stephanie Knapp

| Analyte   | LOQ (ppm) | Action Limit (ppm) | Results (ppm) | Pass/Fail |
|---|-----------|--------------------|---------------|-----------|
| 1,2-Dichloroethane (Ethylene dichloride, Ethylene chloride) | 0.100     | 5.00               | <LOQ          | PASS      |
| 2-Propanol (Isopropanol, Isopropyl alcohol)                 | 125       | 5000               | <LOQ          | PASS      |
| Acetone (2-Propanone)                                       | 125       | 5000               | <LOQ          | PASS      |
| Acetonitrile  | 23.6      | 410                | <LOQ          | PASS      |
| Benzene   | 0.100     | 2.00               | <LOQ          | PASS      |
| Butanes, Total  | 62.5      | 5000               | <LOQ          | PASS      |
| Chloroform  | 1.50      | 60.0               | <LOQ          | PASS      |
| Dichloromethane (Methylene chloride)                        | 15.0      | 600                | <LOQ          | PASS      |
| Dimethyl sulfoxide (DMSO)                                   | 125       | 5000               | <LOQ          | PASS      |
| Ethanol (Ethyl alcohol)                                     | 125       | 5000               | <LOQ          | PASS      |
| Ethyl acetate (Acetic acid ethyl ester)                     | 125       | 5000               | <LOQ          | PASS      |
| Ethyl ether (Diethyl ether, 1,1'-Oxybisethane)              | 125       | 5000               | <LOQ          | PASS      |
| Heptane (n-Heptane)   | 125       | 5000               | <LOQ          | PASS      |
| Hexanes, Total  | 14.5      | 290                | <LOQ          | PASS      |
| Methanol (Methyl alcohol)                                   | 75.1      | 3000               | <LOQ          | PASS      |
| Pentanes, Total   | 195       | 5000               | <LOQ          | PASS      |
| Propane   | 63.0      | 5000               | <LOQ          | PASS      |
| Toluene (Methylbenzene)                                     | 22.3      | 890                | <LOQ          | PASS      |
| Trichloroethane (1,1,1-)                                    | 37.6      | 1500               | <LOQ          | PASS      |
| Tetrafluoroethane (1,1,1,2-) (HFC134a)*                     | 10.0      | 1000               | <LOQ          | PASS      |
| Xylenes, Total (ortho-, meta-, para-)                       | 109       | 2170               | <LOQ          | PASS      |

Weston Owen     01/26/2026  
 Laboratory Manager

*Weston Owen*

Smithers CTS New York LLC  
 49 John Hicks Drive  
 Warwick, NY 10990  
 (845) 202-9737



This is a Smithers CTS New York LLC certification that relates only to the material tested and shall not be reproduced, unless in its entirety, without written approval from Smithers CTS New York LLC. Test results are confidential, unless explicitly waived. Pass/Fail results do not use uncertainty, but is available upon request. The product represented has been tested by Smithers CTS New York LLC using validated scientific methodologies. Note action levels are state determined thresholds for human safety and consumption. Acronym Definitions: ND - Not Detected, LOQ - Limit of Quantification, ULOQ - Upper Limit of Quantification; are terms used to describe the reliably measured smallest and largest concentrations. <LOQ\* denotes the result is above detection limit, but below quantifiable limit. CFU - Colony Forming Units. Cannabis Product Sampling SOP# SOP.T.20.010.



NWC NY 9, LLC dba Wyld  
 Address: support@wyldcanna.com  
 Contact Name: N/A  
 Contact Phone: N/A  
 License #: OCM-PROC-24-000097  
 Sample ID: 2601SMNY0048.0195  
 Metrc Tag: 1A41203000006B1000001919



**SMITHERS**

**CERTIFICATE OF ANALYSIS**

Permit #: OCM-CPL-00004

Certificate: 14125.1

**Trace Metals**

**Pass**

**Sample Analysis**

Date: 01/21/2026 02:23 PM

SOP: NY.SOPT.40.050

Analyzed By: ICP-MS

Sample Weight: 0.1254 g

Analyst: Moni Kaneti

| Analyte       | LOQ (µg/g) | Action Limit (µg/g) | Results (µg/g) | Pass/Fail |
|---------------|------------|---------------------|----------------|-----------|
| Antimony (Sb) | 0.200      | 120                 | <LOQ           | PASS      |
| Arsenic (As)  | 0.200      | 1.50                | <LOQ           | PASS      |
| Cadmium (Cd)  | 0.200      | 0.500               | <LOQ           | PASS      |
| Chromium (Cr) | 0.200      | 1100                | <LOQ           | PASS      |
| Copper (Cu)   | 0.200      | 300                 | <LOQ           | PASS      |
| Lead (Pb)     | 0.200      | 0.500               | <LOQ           | PASS      |
| Mercury (Hg)  | 0.0400     | 3.00                | <LOQ           | PASS      |
| Nickel (Ni)   | 0.200      | 20.0                | <LOQ           | PASS      |

**Mycotoxin Analysis**

**Pass**

**Sample Analysis**

Date: 01/21/2026 02:27 PM

SOP: NY.SOPT.40.180

Analyzed By: LC-MS/MS

Sample Weight: 0.1023 g

Analyst: Destiny Ribadeneyra

| Analyte           | LOQ (µg/g) | Action Limit (µg/g) | Results (µg/g) | Pass/Fail |
|-------------------|------------|---------------------|----------------|-----------|
| Sum of Aflatoxins | -          | 0.020               | <LOQ           | PASS      |
| Aflatoxin B1      | 0.0010     | 0.020               | <LOQ           | PASS      |
| Aflatoxin B2      | 0.0020     | 0.020               | <LOQ           | PASS      |
| Aflatoxin G1      | 0.0010     | 0.020               | <LOQ           | PASS      |
| Aflatoxin G2      | 0.0020     | 0.020               | <LOQ           | PASS      |
| Ochratoxin A      | 0.0020     | 0.020               | <LOQ           | PASS      |

**Weston Owen**     01/26/2026  
 Laboratory Manager

*Weston Owen*

**Smithers CTS New York LLC**  
 49 John Hicks Drive  
 Warwick, NY 10990  
 (845) 202-9737



This is a Smithers CTS New York LLC certification that relates only to the material tested and shall not be reproduced, unless in its entirety, without written approval from Smithers CTS New York LLC. Test results are confidential, unless explicitly waived. Pass/Fail results do not use uncertainty, but is available upon request. The product represented has been tested by Smithers CTS New York LLC using validated scientific methodologies. Note action levels are state determined thresholds for human safety and consumption. Acronym Definitions: ND - Not Detected, LOQ - Limit of Quantification, ULOQ - Upper Limit of Quantification; are terms used to describe the reliably measured smallest and largest concentrations. <LOQ\* denotes the result is above detection limit, but below quantifiable limit. CFU - Colony Forming Units. Cannabis Product Sampling SOP# SOP.T.20.010.



NWC NY 9, LLC dba Wyld  
 Address: support@wyldcanna.com  
 Contact Name: N/A  
 Contact Phone: N/A  
 License #: OCM-PROC-24-000097  
 Sample ID: 2601SMNY0048.0195  
 Metrc Tag: 1A41203000006B1000001919



**CERTIFICATE OF ANALYSIS**  
 Permit #: OCM-CPL-00004

Certificate: 14125.1

## Pesticides LC

Pass

### Sample Analysis

Date: 01/20/2026 01:31 PM

SOP: NY.SOPT.040.270

Analyzed By: LC-MS/MS

Sample Weight: 0.9516 g

Analyst: Destiny Ribadeneyra

| Analyte               | LOQ (ppm) | Action Limit (ppm) | Results (ppm) | Pass/Fail | Analyte               | LOQ (ppm) | Action Limit (ppm) | Results (ppm) | Pass/Fail |
|-----------------------|-----------|--------------------|---------------|-----------|-----------------------|-----------|--------------------|---------------|-----------|
| Abamectin             | 0.0180    | 0.500              | <LOQ          | PASS      | Imidacloprid          | 0.00800   | 0.400              | <LOQ          | PASS      |
| Acephate              | 0.00700   | 0.400              | <LOQ          | PASS      | Indole-3-butyric acid | 0.00700   | 1.00               | <LOQ          | PASS      |
| Acequinocyl           | 0.0160    | 2.00               | <LOQ          | PASS      | Kresoxim methyl       | 0.0120    | 0.400              | <LOQ          | PASS      |
| Acetamiprid           | 0.00500   | 0.200              | <LOQ          | PASS      | Malathion             | 0.0110    | 0.200              | <LOQ          | PASS      |
| Aldicarb              | 0.00500   | 0.400              | <LOQ          | PASS      | Metalaxyl             | 0.0120    | 0.200              | <LOQ          | PASS      |
| Azadirachtin          | 0.0220    | 1.00               | <LOQ          | PASS      | Methiocarb            | 0.00400   | 0.200              | <LOQ          | PASS      |
| Azoxystrobin          | 0.00600   | 0.200              | <LOQ          | PASS      | Methomyl              | 0.0120    | 0.400              | <LOQ          | PASS      |
| Bifenazate            | 0.00600   | 0.200              | <LOQ          | PASS      | Mevinphos             | 0.0190    | 1.00               | <LOQ          | PASS      |
| Bifenthrin            | 0.00300   | 0.200              | <LOQ          | PASS      | MGK-264               | 0.0110    | 0.200              | <LOQ          | PASS      |
| Boscalid              | 0.0110    | 0.400              | <LOQ          | PASS      | Myclobutanil          | 0.0130    | 0.200              | <LOQ          | PASS      |
| Carbaryl              | 0.00600   | 0.200              | <LOQ          | PASS      | Naled                 | 0.00500   | 0.500              | <LOQ          | PASS      |
| Carbofuran            | 0.00500   | 0.200              | <LOQ          | PASS      | Oxamyl                | 0.00800   | 1.00               | <LOQ          | PASS      |
| Chlorantraniliprole   | 0.00600   | 0.200              | <LOQ          | PASS      | Paclobutrazol         | 0.0150    | 0.400              | <LOQ          | PASS      |
| Chloromequat chloride | 0.0190    | 1.00               | <LOQ          | PASS      | Permethrins, Total    | 0.00900   | 0.200              | <LOQ          | PASS      |
| Chlorpyrifos          | 0.00900   | 0.200              | <LOQ          | PASS      | Phosmet               | 0.00700   | 0.200              | <LOQ          | PASS      |
| Clofentezine          | 0.0100    | 0.200              | <LOQ          | PASS      | Piperonyl Butoxide    | 0.00600   | 2.00               | <LOQ          | PASS      |
| Daminozide            | 0.00400   | 1.00               | <LOQ          | PASS      | Prallethrin           | 0.00800   | 0.200              | <LOQ          | PASS      |
| Diazinon              | 0.00700   | 0.200              | <LOQ          | PASS      | Propiconazole         | 0.00600   | 0.400              | <LOQ          | PASS      |
| Dichlorvos            | 0.0120    | 1.00               | <LOQ          | PASS      | Propoxur              | 0.00800   | 0.200              | <LOQ          | PASS      |
| Dimethoate            | 0.00600   | 0.200              | <LOQ          | PASS      | Pyrethrins            | 0.0140    | 1.00               | <LOQ          | PASS      |
| Dimethomorph          | 0.00500   | 1.00               | <LOQ          | PASS      | Pyridaben             | 0.00600   | 0.200              | <LOQ          | PASS      |
| Ethoprophos           | 0.0130    | 0.200              | <LOQ          | PASS      | Spinetoram, Total     | 0.00500   | 1.00               | <LOQ          | PASS      |
| Etofenprox            | 0.00300   | 0.400              | <LOQ          | PASS      | Spinosad, Total       | 0.00600   | 0.200              | <LOQ          | PASS      |
| Etoxazole             | 0.00500   | 0.200              | <LOQ          | PASS      | Spiromesifen          | 0.0130    | 0.200              | <LOQ          | PASS      |
| Fenhexamid            | 0.0150    | 1.00               | <LOQ          | PASS      | Spirotetramat         | 0.00600   | 0.200              | <LOQ          | PASS      |
| Fenoxycarb            | 0.0110    | 0.200              | <LOQ          | PASS      | Spiroxamine           | 0.00400   | 0.200              | <LOQ          | PASS      |
| Fenpyroximate         | 0.00200   | 0.400              | <LOQ          | PASS      | Tebuconazole          | 0.0120    | 0.400              | <LOQ          | PASS      |
| Flonicamid            | 0.00700   | 1.00               | <LOQ          | PASS      | Thiacloprid           | 0.00800   | 0.200              | <LOQ          | PASS      |
| Fludioxonil           | 0.0170    | 0.400              | <LOQ          | PASS      | Thiamethoxam          | 0.00800   | 0.200              | <LOQ          | PASS      |
| Hexythiazox           | 0.00500   | 1.00               | <LOQ          | PASS      |                       |           |                    |               |           |

Weston Owen     01/26/2026  
 Laboratory Manager

*Weston Owen*

Smithers CTS New York LLC  
 49 John Hicks Drive  
 Warwick, NY 10990  
 (845) 202-9737



This is a Smithers CTS New York LLC certification that relates only to the material tested and shall not be reproduced, unless in its entirety, without written approval from Smithers CTS New York LLC. Test results are confidential, unless explicitly waived. Pass/Fail results do not use uncertainty, but is available upon request. The product represented has been tested by Smithers CTS New York LLC using validated scientific methodologies. Note action levels are state determined thresholds for human safety and consumption. Acronym Definitions: ND - Not Detected, LOQ - Limit of Quantification, ULOQ - Upper Limit of Quantification; are terms used to describe the reliably measured smallest and largest concentrations. <LOQ denotes the result is above detection limit, but below quantifiable limit. CFU - Colony Forming Units. Cannabis Product Sampling SOP# SOP.T.20.010.



NWC NY 9, LLC dba Wyld  
 Address: support@wyldcanna.com  
 Contact Name: N/A  
 Contact Phone: N/A  
 License #: OCM-PROC-24-000097  
 Sample ID: 2601SMNY0048.0195  
 Metrc Tag: 1A41203000006B1000001919



**SMITHERS**

**CERTIFICATE OF ANALYSIS**

Permit #: OCM-CPL-00004

Certificate: 14125.1

**Pesticides GC**

**Pass**

**Sample Analysis**

**Date:** 01/26/2026 10:02 AM

**SOP:** NYS.SOPT.040.271

**Analyzed By:** GC-MS/MS

**Sample Weight:** N/A

**Analyst:** Destiny Ribadeneyra

| Analyte                 | LOQ (ppm) | Action Limit (ppm) | Results (ppm) | Pass/Fail |
|-------------------------|-----------|--------------------|---------------|-----------|
| Captan                  | 0.300     | 1.00               | <LOQ          | PASS      |
| Chlordane               | 0.0700    | 1.00               | <LOQ          | PASS      |
| Chlorfenapyr            | 0.100     | 1.00               | <LOQ          | PASS      |
| Coumaphos               | 0.190     | 1.00               | <LOQ          | PASS      |
| Cyfluthrin              | 0.110     | 1.00               | <LOQ          | PASS      |
| Cypermethrin            | 0.240     | 1.00               | <LOQ          | PASS      |
| Fipronil                | 0.170     | 0.400              | <LOQ          | PASS      |
| Imazalil                | 0.170     | 0.200              | <LOQ          | PASS      |
| Methyl parathion        | 0.0900    | 0.200              | <LOQ          | PASS      |
| Pentachloronitrobenzene | 0.170     | 1.00               | <LOQ          | PASS      |
| Trifloxystrobin         | 0.110     | 0.200              | <LOQ          | PASS      |

**Weston Owen**     01/26/2026  
 Laboratory Manager

*Weston Owen*

**Smithers CTS New York LLC**  
 49 John Hicks Drive  
 Warwick, NY 10990  
 (845) 202-9737



This is a Smithers CTS New York LLC certification that relates only to the material tested and shall not be reproduced, unless in its entirety, without written approval from Smithers CTS New York LLC. Test results are confidential, unless explicitly waived. Pass/Fail results do not use uncertainty, but is available upon request. The product represented has been tested by Smithers CTS New York LLC using validated scientific methodologies. Note action levels are state determined thresholds for human safety and consumption. Acronym Definitions: ND - Not Detected, LOQ - Limit of Quantification, ULOQ - Upper Limit of Quantification; are terms used to describe the reliably measured smallest and largest concentrations. <LOQ denotes the result is above detection limit, but below quantifiable limit. CFU - Colony Forming Units. Cannabis Product Sampling SOP# SOP.T.20.010.



NWC NY 9, LLC dba Wyld  
 Address: support@wyldcanna.com  
 Contact Name: N/A  
 Contact Phone: N/A  
 License #: OCM-PROC-24-000097  
 Sample ID: 2601SMNY0048.0195  
 Metrc Tag: 1A41203000006B1000001919



**CERTIFICATE OF ANALYSIS**  
 Permit #: OCM-CPL-00004

Certificate: 14125.1

### Microbial Impurities - MDG

Pass

#### Sample Analysis

Date: 01/21/2026 09:48 PM      SOP: NYS.SOPT.40.273  
 Analyzed By: PCR  
 Analyst: Kristy Lee

| Analyte                                | Microbial Type | LOQ (CFU/g) | Allowable Limit | Results      | Pass/Fail |
|--|----------------|-------------|-----------------|--------------|-----------|
| Shiga toxin-producing Escherichia coli | Bacterial      | 1           | Not Detected    | Not Detected | PASS      |
| Salmonella species                     | Bacterial      | 1           | Not Detected    | Not Detected | PASS      |
| Aspergillus flavus                     | Fungal         | 1           | Not Detected    | Not Detected | PASS      |
| Aspergillus niger                      | Fungal         | 1           | Not Detected    | Not Detected | PASS      |
| Aspergillus terreus                    | Fungal         | 1           | Not Detected    | Not Detected | PASS      |
| Aspergillus fumigatus                  | Fungal         | 1           | Not Detected    | Not Detected | PASS      |

### Microbial Impurities - TAPC

Pass

#### Sample Analysis

Date: 01/21/2026 09:45 PM      SOP: NYS.SOPT.040.200  
 Analyzed By: Plating  
 Analyst: Lindsey Vento

| Analyte                       | LOQ (CFU/g) | Action Limit (CFU/g) | Results (CFU/g) | Pass/Fail |
|-------------------------------|-------------|----------------------|-----------------|-----------|
| Total Aerobic Bacteria/CDP-TC | 100         | 10000                | <LOQ            | PASS      |

### Microbial Impurities - TYMC

Pass

#### Sample Analysis

Date: 01/19/2026 03:00 PM      SOP: NYS.SOPT.040.200  
 Analyzed By: Plating  
 Analyst: Lindsey Vento

| Analyte              | LOQ (CFU/g) | Action Limit (CFU/g) | Results (CFU/g) | Pass/Fail |
|----------------------|-------------|----------------------|-----------------|-----------|
| Total Yeast and Mold | 100         | 1000                 | <LOQ            | PASS      |

Weston Owen      01/26/2026  
 Laboratory Manager

*Weston Owen*

Smithers CTS New York LLC  
 49 John Hicks Drive  
 Warwick, NY 10990  
 (845) 202-9737



This is a Smithers CTS New York LLC certification that relates only to the material tested and shall not be reproduced, unless in its entirety, without written approval from Smithers CTS New York LLC. Test results are confidential, unless explicitly waived. Pass/Fail results do not use uncertainty, but is available upon request. The product represented has been tested by Smithers CTS New York LLC using validated scientific methodologies. Note action levels are state determined thresholds for human safety and consumption. Acronym Definitions: ND - Not Detected, LOQ - Limit of Quantification, ULOQ - Upper Limit of Quantification; are terms used to describe the reliably measured smallest and largest concentrations. <LOQ denotes the result is above detection limit, but below quantifiable limit. CFU - Colony Forming Units. Cannabis Product Sampling SOP# SOPT.20.010.



NWC NY 9, LLC dba Wyld  
 Address: support@wyldcanna.com  
 Contact Name: N/A  
 Contact Phone: N/A  
 License #: OCM-PROC-24-000097  
 Sample ID: 2601SMNY0048.0195  
 Metrc Tag: 1A41203000006B1000001919



**SMITHERS**

**CERTIFICATE OF ANALYSIS**

Permit #: OCM-CPL-00004

Certificate: 14125.1

**Water Activity**

**Pass**

**Sample Analysis**

**Date:** 01/16/2026 02:48 PM      **SOP:** NY.SOPT.040.210

**Analyzed By:** Water Activity Meter

**Analyst:** Dylan Kane

| Analyte        | LOQ (Aw) | Action Limit (Aw) | Results (Aw) | Pass/Fail |
|----------------|----------|-------------------|--------------|-----------|
| Water Activity | 0.25     | 0.85              | 0.73         | PASS      |



**Weston Owen**      01/26/2026  
 Laboratory Manager

*Weston Owen*

**Smithers CTS New York LLC**  
 49 John Hicks Drive  
 Warwick, NY 10990  
 (845) 202-9737



This is a Smithers CTS New York LLC certification that relates only to the material tested and shall not be reproduced, unless in its entirety, without written approval from Smithers CTS New York LLC. Test results are confidential, unless explicitly waived. Pass/Fail results do not use uncertainty, but is available upon request. The product represented has been tested by Smithers CTS New York LLC using validated scientific methodologies. Note action levels are state determined thresholds for human safety and consumption. Acronym Definitions: ND - Not Detected, LOQ - Limit of Quantification, ULOQ - Upper Limit of Quantification; are terms used to describe the reliably measured smallest and largest concentrations. <LOQ denotes the result is above detection limit, but below quantifiable limit. CFU - Colony Forming Units. Cannabis Product Sampling SOP# SOP.T.20.010.