



Gron NY  
 Address: 425 Oser Ave  
 Suite 3  
 Hauppauge, NY 11788  
 Contact Name:  
 Contact Phone:  
 License #: OCM-PROC-25-000273  
 Sample ID: 2603SMNY0258.1069  
 Metrc Tag: 1A4120300000196000001236



**CERTIFICATE OF ANALYSIS**  
 Permit #: OCM-CPL-00004

Certificate: 15011.1

## 1:1 Dark Chocolate Mini Bar - CBN/THC - Sleepy Indica

Metrc Package ID: 1A4120300000196000001236    Sample Type: Edible  
 Metrc Sample ID 1A4120300000196000001234    Sample Collected: 03/11/2026 02:20 PM  
 Lot #: NYDRMI1B2626    Lot Size: 7675  
 Sample ID: 2603SMNY0258.1069    Amount Received: 4  
 Regulatory Category: Adult Use    Received: 03/10/2026  
 Sampling Location: 425 Oser Ave Suite 3 Hauppauge, NY 11788    Published: 03/18/2026



## COMPLIANCE FOR RETAIL

|                                    |                                       |  |                                      |                               |
|------------------------------------|---------------------------------------|--|--------------------------------------|-------------------------------|
| Cannabinoid Profile<br><b>Pass</b> | Terpenes Total<br><b>Tested</b>       | Residual Solvents<br><b>Pass</b>       | <b>Pass</b><br>Sample Status         |                               |
| Pesticides<br><b>Pass</b>          | Mycotoxins<br><b>Pass</b>             | Water Activity<br><b>Pass</b>          |                                      | <b>1.647%</b><br>Total THC    |
| Trace Metals<br><b>Pass</b>        | Microbial Contaminants<br><b>Pass</b> | Moisture Analysis<br><b>Not Tested</b> |                                      | <b>0.002808%</b><br>Total CBD |
|                                    | Filth & Foreign<br><b>Not Tested</b>  |  | <b>3.242 %</b><br>Total Cannabinoids |                               |

Report Notes: N/A

Weston Owen    03/18/2026  
 Laboratory Manager

*Weston Owen*

Smithers CTS New York LLC  
 49 John Hicks Drive  
 Warwick, NY 10990  
 (845) 202-9737



This is a Smithers CTS New York LLC certification that relates only to the material tested and shall not be reproduced, unless in its entirety, without written approval from Smithers CTS New York LLC. Test results are confidential, unless explicitly waived. Pass/Fail results do not use uncertainty, but is available upon request. The product represented has been tested by Smithers CTS New York LLC using validated scientific methodologies. Note action levels are state determined thresholds for human safety and consumption. Acronym Definitions: ND - Not Detected, LOQ - Limit of Quantification, ULOQ - Upper Limit of Quantification; are terms used to describe the reliably measured smallest and largest concentrations. <LOQ denotes the result is above detection limit, but below quantifiable limit. CFU - Colony Forming Units. Cannabis Product Sampling SOP# SOP.T.20.010.



Gron NY  
 Address: 425 Oser Ave  
 Suite 3  
 Hauppauge, NY 11788  
 Contact Name:  
 Contact Phone:  
 License #: OCM-PROC-25-000273  
 Sample ID: 2603SMNY0258.1069  
 Metrc Tag: 1A4120300000196000001236



**CERTIFICATE OF ANALYSIS**  
 Permit #: OCM-CPL-00004

Certificate: 15011.1

## Average Cannabinoid Profile

Pass

### Sample Analysis

Date: 03/18/2026 03:30 PM

SOP: NY.SOPT.40.260

Analyzed By: HPLC

Sample Weight: N/A

Analyst: Stephanie Knapp

| Analyte                                    | LOQ (%) | Average % (w/w) | mg/serving |
|--|---------|-----------------|------------|
| Total Tetrahydrocannabinol (THC)           | -       | 1.647           | 11.35      |
| Tetrahydrocannabinolic acid (THCA)         | 0.002   | <LOQ            | <LOQ       |
| Δ8-THC                                     | 0.002   | <LOQ            | <LOQ       |
| Δ9-THC                                     | 0.002   | 1.647           | 11.35      |
| Δ10-THC-RS                                 | 0.002   | <LOQ            | <LOQ       |
| Δ10-THC-RR                                 | 0.002   | <LOQ            | <LOQ       |
| Total Cannabidiol (CBD)                    | -       | 0.002808        | 0.01935    |
| Cannabidiolic acid (CBDA)                  | 0.002   | <LOQ            | <LOQ       |
| Cannabidiol (CBD)                          | 0.002   | 0.002808        | 0.01935    |
| Total Active Tetrahydrocannabivarin (THCV) | -       | 0.005384        | 0.0371     |
| Tetrahydrocannabivarinic acid (THCVA)      | 0.002   | <LOQ            | <LOQ       |
| Δ9-THCV                                    | 0.002   | 0.005384        | 0.0371     |
| Total Active Cannabigerol (CBG)            | -       | 0.05372         | 0.3702     |
| Cannabigerolic acid (CBGA)                 | 0.002   | <LOQ            | <LOQ       |
| Cannabigerol (CBG)                         | 0.002   | 0.05372         | 0.3702     |
| Cannabidivarin (CBDV)                      | 0.002   | <LOQ            | <LOQ       |
| Cannabinol (CBN)                           | 0.002   | 1.523           | 10.5       |
| Cannabichromene (CBC)                      | 0.002   | 0.01012         | 0.06974    |

| Cannabinoid Totals | Average % (w/w) | mg/serving |
|--------------------|-----------------|------------|
| Total Cannabinoids | 3.242           | 22.35      |

Total THC = THCa\*0.877 + Δ9-THC

Total CBD = CBDa\*0.877 + CBD

Total Cannabinoids = Sum of all analytes

Total Active CBD = CBD + (0.877 x CBDA); Total Active CBG = CBG + (0.878 x CBGA);

Total Active THC = (Δ9THC + Δ8THC + Δ10THC-RS + Δ10THC-RR) + (0.877 x THCA);

Total Active THCV = THCV + (0.867 x THCVA);

Serving Weight: 0.68912 g; Servings/Package: 10

Weston Owen 03/18/2026

Laboratory Manager

*Weston Owen*

Smithers CTS New York LLC  
 49 John Hicks Drive  
 Warwick, NY 10990  
 (845) 202-9737



This is a Smithers CTS New York LLC certification that relates only to the material tested and shall not be reproduced, unless in its entirety, without written approval from Smithers CTS New York LLC. Test results are confidential, unless explicitly waived. Pass/Fail results do not use uncertainty, but is available upon request. The product represented has been tested by Smithers CTS New York LLC using validated scientific methodologies. Note action levels are state determined thresholds for human safety and consumption. Acronym Definitions: ND - Not Detected, LOQ - Limit of Quantification, ULOQ - Upper Limit of Quantification; are terms used to describe the reliably measured smallest and largest concentrations. <LOQ denotes the result is above detection limit, but below quantifiable limit. CFU - Colony Forming Units. Cannabis Product Sampling SOP# SOP.T.20.010.



Gron NY  
 Address: 425 Oser Ave  
 Suite 3  
 Hauppauge, NY 11788  
 Contact Name:  
 Contact Phone:  
 License #: OCM-PROC-25-000273  
 Sample ID: 2603SMNY0258.1069  
 Metrc Tag: 1A4120300000196000001236



**CERTIFICATE OF ANALYSIS**  
 Permit #: OCM-CPL-00004

Certificate: 15011.1

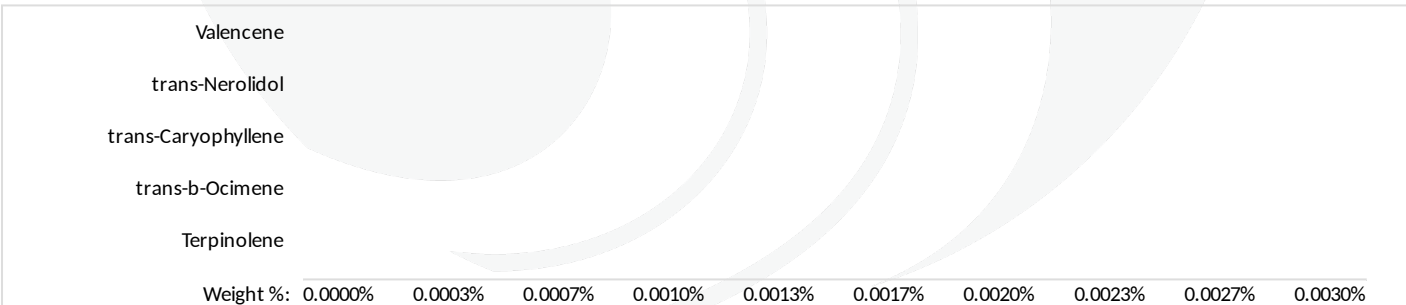
**Terpene Total**  
**Tested (0.0000%)**

**Sample Analysis**

**Date:** 03/16/2026 04:31 PM      **SOP:** NY.SOPT.40.090  
**Sample Weight:** 0.5421 g      **Analyzed By:** GC-MS  
**Analyst:** Stephanie Knapp

| Analyte             | LOQ (%)   | Results (%) | Analyte             | LOQ (%)   | Results (%) |
|---------------------|-----------|-------------|---------------------|-----------|-------------|
| 3-Carene            | 0.0004200 | <LOQ        | Fenchol             | 0.0004000 | <LOQ        |
| alpha-Bisabolol     | 0.0005000 | <LOQ        | gamma-Terpinene     | 0.0004400 | <LOQ        |
| alpha-Humulene      | 0.0005600 | <LOQ        | gamma-Terpineol     | 0.0003000 | <LOQ        |
| alpha-Phellandrene  | 0.0006600 | <LOQ        | Geraniol            | 0.0004800 | <LOQ        |
| alpha-Pinene        | 0.0004800 | <LOQ        | Geranyl acetate     | 0.0006200 | <LOQ        |
| alpha-Terpinene     | 0.0002600 | <LOQ        | Guaiol              | 0.0006000 | <LOQ        |
| alpha-Terpineol     | 0.0003400 | <LOQ        | Isoborneol          | 0.0003400 | <LOQ        |
| beta-Myrcene        | 0.0006400 | <LOQ        | Isopulegol          | 0.0006600 | <LOQ        |
| beta-Pinene         | 0.0006600 | <LOQ        | Limonene            | 0.0007400 | <LOQ        |
| Borneol             | 0.0004600 | <LOQ        | Linalool            | 0.0004600 | <LOQ        |
| Camphene            | 0.0004400 | <LOQ        | Menthol             | 0.0004600 | <LOQ        |
| Camphor             | 0.0004000 | <LOQ        | Nerol               | 0.0005000 | <LOQ        |
| Caryophyllene oxide | 0.0005800 | <LOQ        | Pulegone (+)        | 0.0005600 | <LOQ        |
| Cedrene             | 0.0004400 | <LOQ        | Sabinene            | 0.0003400 | <LOQ        |
| Cedrol              | 0.0005600 | <LOQ        | Sabinene Hydrate    | 0.0004200 | <LOQ        |
| cis-Nerolidol       | 0.0006800 | <LOQ        | Terpinolene         | 0.0005000 | <LOQ        |
| cis-Ocimene         | 0.0005200 | <LOQ        | trans-b-Ocimene     | 0.0004200 | <LOQ        |
| Eucalyptol          | 0.0007200 | <LOQ        | trans-Caryophyllene | 0.0006600 | <LOQ        |
| Farnesene           | 0.0008400 | <LOQ        | trans-Nerolidol     | 0.0007200 | <LOQ        |
| Fenchone            | 0.0005000 | <LOQ        | Valencene           | 0.0005600 | <LOQ        |

| Terpene Totals | % | Pass/Fail |
|----------------|---|-----------|
| Total Terpenes | 0 | N/A       |



**Weston Owen**      03/18/2026  
 Laboratory Manager

*Weston Owen*

**Smithers CTS New York LLC**  
 49 John Hicks Drive  
 Warwick, NY 10990  
 (845) 202-9737



This is a Smithers CTS New York LLC certification that relates only to the material tested and shall not be reproduced, unless in its entirety, without written approval from Smithers CTS New York LLC. Test results are confidential, unless explicitly waived. Pass/Fail results do not use uncertainty, but is available upon request. The product represented has been tested by Smithers CTS New York LLC using validated scientific methodologies. Note action levels are state determined thresholds for human safety and consumption. Acronym Definitions: ND - Not Detected, LOQ - Limit of Quantification, ULOQ - Upper Limit of Quantification; are terms used to describe the reliably measured smallest and largest concentrations. <LOQ denotes the result is above detection limit, but below quantifiable limit. CFU - Colony Forming Units. Cannabis Product Sampling SOP# SOP.T.20.010.



Gron NY  
 Address: 425 Oser Ave  
 Suite 3  
 Hauppauge, NY 11788  
 Contact Name:  
 Contact Phone:  
 License #: OCM-PROC-25-000273  
 Sample ID: 2603SMNY0258.1069  
 Metrc Tag: 1A4120300000196000001236



**CERTIFICATE OF ANALYSIS**  
 Permit #: OCM-CPL-00004

Certificate: 15011.1

## Residual Solvents

Pass

## Sample Analysis

Date: 03/16/2026 04:33 PM

SOP: NYS.SOPT.040.272

Analyzed By: GC-MS

Sample Weight: 0.1039 g

Analyst: Destiny Ribadeneyra

| Analyte   | LOQ (ppm) | Action Limit (ppm) | Results (ppm) | Pass/Fail |
|---|-----------|--------------------|---------------|-----------|
| 1,2-Dichloroethane (Ethylene dichloride, Ethylene chloride) | 0.100     | 5.00               | <LOQ          | PASS      |
| 2-Propanol (Isopropanol, Isopropyl alcohol)                 | 125       | 5000               | <LOQ          | PASS      |
| Acetone (2-Propanone)                                       | 125       | 5000               | <LOQ          | PASS      |
| Acetonitrile  | 23.6      | 410                | <LOQ          | PASS      |
| Benzene   | 0.100     | 2.00               | <LOQ          | PASS      |
| Butanes, Total  | 62.5      | 5000               | <LOQ          | PASS      |
| Chloroform  | 1.50      | 60.0               | <LOQ          | PASS      |
| Dichloromethane (Methylene chloride)                        | 15.0      | 600                | <LOQ          | PASS      |
| Dimethyl sulfoxide (DMSO)                                   | 125       | 5000               | <LOQ          | PASS      |
| Ethanol (Ethyl alcohol)                                     | 125       | 5000               | <LOQ          | PASS      |
| Ethyl acetate (Acetic acid ethyl ester)                     | 125       | 5000               | <LOQ          | PASS      |
| Ethyl ether (Diethyl ether, 1,1'-Oxybisethane)              | 125       | 5000               | <LOQ          | PASS      |
| Heptane (n-Heptane)   | 125       | 5000               | <LOQ          | PASS      |
| Hexanes, Total  | 14.5      | 290                | <LOQ          | PASS      |
| Methanol (Methyl alcohol)                                   | 75.1      | 3000               | <LOQ          | PASS      |
| Pentanes, Total   | 195       | 5000               | <LOQ          | PASS      |
| Propane   | 63.0      | 5000               | <LOQ          | PASS      |
| Toluene (Methylbenzene)                                     | 22.3      | 890                | <LOQ          | PASS      |
| Trichloroethane (1,1,1-)                                    | 37.6      | 1500               | <LOQ          | PASS      |
| Tetrafluoroethane (1,1,1,2-) (HFC134a)*                     | 10.0      | 1000               | <LOQ          | PASS      |
| Xylenes, Total (ortho-, meta-, para-)                       | 109       | 2170               | <LOQ          | PASS      |

Weston Owen      03/18/2026  
 Laboratory Manager

*Weston Owen*

Smithers CTS New York LLC  
 49 John Hicks Drive  
 Warwick, NY 10990  
 (845) 202-9737



This is a Smithers CTS New York LLC certification that relates only to the material tested and shall not be reproduced, unless in its entirety, without written approval from Smithers CTS New York LLC. Test results are confidential, unless explicitly waived. Pass/Fail results do not use uncertainty, but is available upon request. The product represented has been tested by Smithers CTS New York LLC using validated scientific methodologies. Note action levels are state determined thresholds for human safety and consumption. Acronym Definitions: ND - Not Detected, LOQ - Limit of Quantification, ULOQ - Upper Limit of Quantification; are terms used to describe the reliably measured smallest and largest concentrations. <LOQ\* denotes the result is above detection limit, but below quantifiable limit. CFU - Colony Forming Units. Cannabis Product Sampling SOP# SOP.T.20.010.



Gron NY  
 Address: 425 Oser Ave  
 Suite 3  
 Hauppauge, NY 11788  
 Contact Name:  
 Contact Phone:  
 License #: OCM-PROC-25-000273  
 Sample ID: 2603SMNY0258.1069  
 Metrc Tag: 1A4120300000196000001236



**CERTIFICATE OF ANALYSIS**  
 Permit #: OCM-CPL-00004

Certificate: 15011.1

## Trace Metals

Pass

### Sample Analysis

Date: 03/13/2026 02:53 PM

SOP: NY.SOPT.40.050

Analyzed By: ICP-MS

Sample Weight: 0.1152 g

Analyst: Destiny Ribadeneyra

| Analyte       | LOQ (µg/g) | Action Limit (µg/g) | Results (µg/g) | Pass/Fail |
|---------------|------------|---------------------|----------------|-----------|
| Antimony (Sb) | 0.200      | 120                 | <LOQ           | PASS      |
| Arsenic (As)  | 0.200      | 1.50                | <LOQ           | PASS      |
| Cadmium (Cd)  | 0.200      | 0.500               | <LOQ           | PASS      |
| Chromium (Cr) | 0.200      | 1100                | 0.336          | PASS      |
| Copper (Cu)   | 0.200      | 300                 | 13.2           | PASS      |
| Lead (Pb)     | 0.200      | 0.500               | <LOQ           | PASS      |
| Mercury (Hg)  | 0.0400     | 3.00                | <LOQ           | PASS      |
| Nickel (Ni)   | 0.200      | 20.0                | 3.74           | PASS      |

## Mycotoxin Analysis

Pass

### Sample Analysis

Date: 03/13/2026 05:18 PM

SOP: NY.SOPT.40.180

Analyzed By: LC-MS/MS

Sample Weight: 0.0967 g

Analyst: Destiny Ribadeneyra

| Analyte           | LOQ (µg/g) | Action Limit (µg/g) | Results (µg/g) | Pass/Fail |
|-------------------|------------|---------------------|----------------|-----------|
| Sum of Aflatoxins | -          | 0.020               | <LOQ           | PASS      |
| Aflatoxin B1      | 0.0050     | 0.020               | <LOQ           | PASS      |
| Aflatoxin B2      | 0.0050     | 0.020               | <LOQ           | PASS      |
| Aflatoxin G1      | 0.0050     | 0.020               | <LOQ           | PASS      |
| Aflatoxin G2      | 0.0050     | 0.020               | <LOQ           | PASS      |
| Ochratoxin A      | 0.0050     | 0.020               | <LOQ           | PASS      |

Weston Owen     03/18/2026  
 Laboratory Manager

*Weston Owen*

Smithers CTS New York LLC  
 49 John Hicks Drive  
 Warwick, NY 10990  
 (845) 202-9737



This is a Smithers CTS New York LLC certification that relates only to the material tested and shall not be reproduced, unless in its entirety, without written approval from Smithers CTS New York LLC. Test results are confidential, unless explicitly waived. Pass/Fail results do not use uncertainty, but is available upon request. The product represented has been tested by Smithers CTS New York LLC using validated scientific methodologies. Note action levels are state determined thresholds for human safety and consumption. Acronym Definitions: ND - Not Detected, LOQ - Limit of Quantification, ULOQ - Upper Limit of Quantification; are terms used to describe the reliably measured smallest and largest concentrations. <LOQ denotes the result is above detection limit, but below quantifiable limit. CFU - Colony Forming Units. Cannabis Product Sampling SOP# SOP.T.20.010.



Gron NY  
 Address: 425 Oser Ave  
 Suite 3  
 Hauppauge, NY 11788  
 Contact Name:  
 Contact Phone:  
 License #: OCM-PROC-25-000273  
 Sample ID: 2603SMNY0258.1069  
 Metrc Tag: 1A4120300000196000001236



**CERTIFICATE OF ANALYSIS**  
 Permit #: OCM-CPL-00004

Certificate: 15011.1

**Pesticides LC**  
  
**Pass**

**Sample Analysis**

Date: 03/16/2026 04:28 PM

SOP: NY.SOPT.040.270

Analyzed By: LC-MS/MS

Sample Weight: 0.9715 g

Analyst: Destiny Ribadeneyra

| Analyte               | LOQ (µg/g) | Action Limit (µg/g) | Results (µg/g) | Pass/Fail | Analyte               | LOQ (µg/g) | Action Limit (µg/g) | Results (µg/g) | Pass/Fail |
|-----------------------|------------|---------------------|----------------|-----------|-----------------------|------------|---------------------|----------------|-----------|
| Abamectin             | 0.100      | 0.500               | <LOQ           | PASS      | Imidacloprid          | 0.103      | 0.400               | <LOQ           | PASS      |
| Acephate              | 0.103      | 0.400               | <LOQ           | PASS      | Indole-3-butyric acid | 0.103      | 1.00                | <LOQ           | PASS      |
| Acequinocyl           | 0.103      | 2.00                | <LOQ           | PASS      | Kresoxim methyl       | 0.103      | 0.400               | <LOQ           | PASS      |
| Acetamiprid           | 0.103      | 0.200               | <LOQ           | PASS      | Malathion             | 0.103      | 0.200               | <LOQ           | PASS      |
| Aldicarb              | 0.103      | 0.400               | <LOQ           | PASS      | Metalaxyl             | 0.103      | 0.200               | <LOQ           | PASS      |
| Azadirachtin          | 0.103      | 1.00                | <LOQ           | PASS      | Methiocarb            | 0.103      | 0.200               | <LOQ           | PASS      |
| Azoxystrobin          | 0.103      | 0.200               | <LOQ           | PASS      | Methomyl              | 0.103      | 0.400               | <LOQ           | PASS      |
| Bifenazate            | 0.103      | 0.200               | <LOQ           | PASS      | Mevinphos             | 0.0860     | 1.00                | <LOQ           | PASS      |
| Bifenthrin            | 0.103      | 0.200               | <LOQ           | PASS      | MGK-264               | 0.0820     | 0.200               | <LOQ           | PASS      |
| Boscalid              | 0.103      | 0.400               | <LOQ           | PASS      | Myclobutanil          | 0.103      | 0.200               | <LOQ           | PASS      |
| Carbaryl              | 0.103      | 0.200               | <LOQ           | PASS      | Naled                 | 0.103      | 0.500               | <LOQ           | PASS      |
| Carbofuran            | 0.103      | 0.200               | <LOQ           | PASS      | Oxamyl                | 0.103      | 1.00                | <LOQ           | PASS      |
| Chlorantraniliprole   | 0.103      | 0.200               | <LOQ           | PASS      | Paclobutrazol         | 0.103      | 0.400               | <LOQ           | PASS      |
| Chloromequat chloride | 0.103      | 1.00                | <LOQ           | PASS      | Permethrins, Total    | 0.103      | 0.200               | <LOQ           | PASS      |
| Chlorpyrifos          | 0.103      | 0.200               | <LOQ           | PASS      | Phosmet               | 0.103      | 0.200               | <LOQ           | PASS      |
| Clofentezine          | 0.103      | 0.200               | <LOQ           | PASS      | Piperonyl Butoxide    | 0.103      | 2.00                | <LOQ           | PASS      |
| Daminozide            | 0.103      | 1.00                | <LOQ           | PASS      | Prallethrin           | 0.103      | 0.200               | <LOQ           | PASS      |
| Diazinon              | 0.103      | 0.200               | <LOQ           | PASS      | Propiconazole         | 0.103      | 0.400               | <LOQ           | PASS      |
| Dichlorvos            | 0.103      | 1.00                | <LOQ           | PASS      | Propoxur              | 0.103      | 0.200               | <LOQ           | PASS      |
| Dimethoate            | 0.103      | 0.200               | <LOQ           | PASS      | Pyrethrins            | 0.103      | 1.00                | <LOQ           | PASS      |
| Dimethomorph          | 0.0640     | 1.00                | <LOQ           | PASS      | Pyridaben             | 0.103      | 0.200               | <LOQ           | PASS      |
| Ethoprophos           | 0.103      | 0.200               | <LOQ           | PASS      | Spinetoram, Total     | 0.0770     | 1.00                | <LOQ           | PASS      |
| Etofenprox            | 0.103      | 0.400               | <LOQ           | PASS      | Spinosad, Total       | 0.0770     | 0.200               | <LOQ           | PASS      |
| Etoxazole             | 0.103      | 0.200               | <LOQ           | PASS      | Spiromesifen          | 0.103      | 0.200               | <LOQ           | PASS      |
| Fenhexamid            | 0.103      | 1.00                | <LOQ           | PASS      | Spirotetramat         | 0.103      | 0.200               | <LOQ           | PASS      |
| Fenoxycarb            | 0.103      | 0.200               | <LOQ           | PASS      | Spiroxamine           | 0.103      | 0.200               | <LOQ           | PASS      |
| Fenpyroximate         | 0.103      | 0.400               | <LOQ           | PASS      | Tebuconazole          | 0.103      | 0.400               | <LOQ           | PASS      |
| Fonicamid             | 0.103      | 1.00                | <LOQ           | PASS      | Thiacloprid           | 0.103      | 0.200               | <LOQ           | PASS      |
| Fludioxonil           | 0.103      | 0.400               | <LOQ           | PASS      | Thiamethoxam          | 0.103      | 0.200               | <LOQ           | PASS      |
| Hexythiazox           | 0.103      | 1.00                | <LOQ           | PASS      |                       |            |                     |                |           |

Weston Owen      03/18/2026  
 Laboratory Manager

*Weston Owen*

Smithers CTS New York LLC  
 49 John Hicks Drive  
 Warwick, NY 10990  
 (845) 202-9737



This is a Smithers CTS New York LLC certification that relates only to the material tested and shall not be reproduced, unless in its entirety, without written approval from Smithers CTS New York LLC. Test results are confidential, unless explicitly waived. Pass/Fail results do not use uncertainty, but is available upon request. The product represented has been tested by Smithers CTS New York LLC using validated scientific methodologies. Note action levels are state determined thresholds for human safety and consumption. Acronym Definitions: ND - Not Detected, LOQ - Limit of Quantification, ULOQ - Upper Limit of Quantification; are terms used to describe the reliably measured smallest and largest concentrations. <LOQ denotes the result is above detection limit, but below quantifiable limit. CFU - Colony Forming Units. Cannabis Product Sampling SOP# SOP.T.20.010.



Gron NY  
 Address: 425 Oser Ave  
 Suite 3  
 Hauppauge, NY 11788  
 Contact Name:  
 Contact Phone:  
 License #: OCM-PROC-25-000273  
 Sample ID: 2603SMNY0258.1069  
 Metrc Tag: 1A4120300000196000001236



**CERTIFICATE OF ANALYSIS**  
 Permit #: OCM-CPL-00004

Certificate: 15011.1

**Pesticides GC**  
  
**Pass**

**Sample Analysis**

**Date:** 03/17/2026 05:51 PM      **SOP:** NYS.SOPT.040.271  
**Analyzed By:** GC-MS/MS      **Sample Weight:** N/A  
**Analyst:** Destiny Ribadeneyra

| Analyte                 | LOQ (µg/g) | Action Limit (µg/g) | Results (µg/g) | Pass/Fail |
|-------------------------|------------|---------------------|----------------|-----------|
| Captan                  | 0.300      | 1.00                | <LOQ           | PASS      |
| Chlordane               | 0.0700     | 1.00                | <LOQ           | PASS      |
| Chlorfenapyr            | 0.100      | 1.00                | <LOQ           | PASS      |
| Coumaphos               | 0.190      | 1.00                | <LOQ           | PASS      |
| Cyfluthrin              | 0.110      | 1.00                | <LOQ           | PASS      |
| Cypermethrin            | 0.240      | 1.00                | <LOQ           | PASS      |
| Fipronil                | 0.170      | 0.400               | <LOQ           | PASS      |
| Imazalil                | 0.170      | 0.200               | <LOQ           | PASS      |
| Methyl parathion        | 0.0900     | 0.200               | <LOQ           | PASS      |
| Pentachloronitrobenzene | 0.170      | 1.00                | <LOQ           | PASS      |
| Trifloxystrobin         | 0.110      | 0.200               | <LOQ           | PASS      |

**Weston Owen**      03/18/2026  
 Laboratory Manager

*Weston Owen*

**Smithers CTS New York LLC**  
 49 John Hicks Drive  
 Warwick, NY 10990  
 (845) 202-9737



This is a Smithers CTS New York LLC certification that relates only to the material tested and shall not be reproduced, unless in its entirety, without written approval from Smithers CTS New York LLC. Test results are confidential, unless explicitly waived. Pass/Fail results do not use uncertainty, but is available upon request. The product represented has been tested by Smithers CTS New York LLC using validated scientific methodologies. Note action levels are state determined thresholds for human safety and consumption. Acronym Definitions: ND - Not Detected, LOQ - Limit of Quantification, ULOQ - Upper Limit of Quantification; are terms used to describe the reliably measured smallest and largest concentrations. <LOQ denotes the result is above detection limit, but below quantifiable limit. CFU - Colony Forming Units. Cannabis Product Sampling SOP# SOP.T.20.010.



Gron NY  
 Address: 425 Oser Ave  
 Suite 3  
 Hauppauge, NY 11788  
 Contact Name:  
 Contact Phone:  
 License #: OCM-PROC-25-000273  
 Sample ID: 2603SMNY0258.1069  
 Metrc Tag: 1A4120300000196000001236



**CERTIFICATE OF ANALYSIS**  
 Permit #: OCM-CPL-00004

Certificate: 15011.1

### Microbial Impurities - MDG

Pass

#### Sample Analysis

Date: 03/16/2026 03:08 PM      SOP: NYS.SOPT.40.273  
 Analyzed By: PCR  
 Analyst: Kristy Lee

| Analyte                                | Microbial Type | LOQ (CFU/g) | Allowable Limit | Results      | Pass/Fail |
|--|----------------|-------------|-----------------|--------------|-----------|
| Shiga toxin-producing Escherichia coli | Bacterial      | 1           | Not Detected    | Not Detected | PASS      |
| Salmonella species                     | Bacterial      | 1           | Not Detected    | Not Detected | PASS      |
| Aspergillus flavus                     | Fungal         | 1           | Not Detected    | Not Detected | PASS      |
| Aspergillus niger                      | Fungal         | 1           | Not Detected    | Not Detected | PASS      |
| Aspergillus terreus                    | Fungal         | 1           | Not Detected    | Not Detected | PASS      |
| Aspergillus fumigatus                  | Fungal         | 1           | Not Detected    | Not Detected | PASS      |

### Microbial Impurities - TAPC

Pass

#### Sample Analysis

Date: 03/13/2026 04:44 PM      SOP: NYS.SOPT.040.200  
 Analyzed By: Plating  
 Analyst: Lindsey Vento

| Analyte                       | LOQ (CFU/g) | Action Limit (CFU/g) | Results (CFU/g) | Pass/Fail |
|-------------------------------|-------------|----------------------|-----------------|-----------|
| Total Aerobic Bacteria/CDP-TC | 100         | 10000                | <LOQ            | PASS      |

### Microbial Impurities - TYMC

Pass

#### Sample Analysis

Date: 03/16/2026 01:35 PM      SOP: NYS.SOPT.040.200  
 Analyzed By: Plating  
 Analyst: Kristy Lee

| Analyte              | LOQ (CFU/g) | Action Limit (CFU/g) | Results (CFU/g) | Pass/Fail |
|----------------------|-------------|----------------------|-----------------|-----------|
| Total Yeast and Mold | 100         | 1000                 | <LOQ            | PASS      |

Weston Owen      03/18/2026  
 Laboratory Manager

*Weston Owen*

Smithers CTS New York LLC  
 49 John Hicks Drive  
 Warwick, NY 10990  
 (845) 202-9737



This is a Smithers CTS New York LLC certification that relates only to the material tested and shall not be reproduced, unless in its entirety, without written approval from Smithers CTS New York LLC. Test results are confidential, unless explicitly waived. Pass/Fail results do not use uncertainty, but is available upon request. The product represented has been tested by Smithers CTS New York LLC using validated scientific methodologies. Note action levels are state determined thresholds for human safety and consumption. Acronym Definitions: ND - Not Detected, LOQ - Limit of Quantification, ULOQ - Upper Limit of Quantification; are terms used to describe the reliably measured smallest and largest concentrations. <LOQ denotes the result is above detection limit, but below quantifiable limit. CFU - Colony Forming Units. Cannabis Product Sampling SOP# SOPT.20.010.



Gron NY  
 Address: 425 Oser Ave  
 Suite 3  
 Hauppauge, NY 11788  
 Contact Name:  
 Contact Phone:  
 License #: OCM-PROC-25-000273  
 Sample ID: 2603SMNY0258.1069  
 Metrc Tag: 1A4120300000196000001236



**CERTIFICATE OF ANALYSIS**  
 Permit #: OCM-CPL-00004

Certificate: 15011.1

**Water Activity**  
  
**Pass**

**Sample Analysis**

**Date:** 03/16/2026 03:49 PM      **SOP:** NY.SOPT.040.210  
**Analyzed By:** Water Activity Meter  
**Analyst:** Dylan Kane

| Analyte        | LOQ (Aw) | Action Limit (Aw) | Results (Aw) | Pass/Fail |
|----------------|----------|-------------------|--------------|-----------|
| Water Activity | 0.25     | 0.85              | 0.29         | PASS      |



**Weston Owen**      03/18/2026  
 Laboratory Manager

*Weston Owen*

**Smithers CTS New York LLC**  
 49 John Hicks Drive  
 Warwick, NY 10990  
 (845) 202-9737



This is a Smithers CTS New York LLC certification that relates only to the material tested and shall not be reproduced, unless in its entirety, without written approval from Smithers CTS New York LLC. Test results are confidential, unless explicitly waived. Pass/Fail results do not use uncertainty, but is available upon request. The product represented has been tested by Smithers CTS New York LLC using validated scientific methodologies. Note action levels are state determined thresholds for human safety and consumption. Acronym Definitions: ND - Not Detected, LOQ - Limit of Quantification, ULOQ - Upper Limit of Quantification; are terms used to describe the reliably measured smallest and largest concentrations. <LOQ denotes the result is above detection limit, but below quantifiable limit. CFU - Colony Forming Units. Cannabis Product Sampling SOP# SOP.T.20.010.