



Gron NY
 Address: 425 Oser Ave
 Suite 3
 Hauppauge, NY 11788
 Contact Name:
 Contact Phone:
 License #: OCM-PROC-25-000273
 Sample ID: 2602SMNY0150.0616
 Metrc Tag: 1A4120300000196000000877



CERTIFICATE OF ANALYSIS
 Permit #: OCM-CPL-00004

Certificate: 14546.1

Raspberry Lemonade Pearls - THC - Sativa

Metrc Package ID: 1A4120300000196000000877 Sample Type: Edible
 Metrc Sample ID 1A4120300000196000000876 Sample Collected: 02/10/2026 12:12 PM
 Lot #: NYRLG1B0426 Lot Size: 3415
 Sample ID: 2602SMNY0150.0616 Amount Received: 4
 Regulatory Category: Adult Use Received: 02/11/2026
 Sampling Location: 425 Oser Ave Suite 3 Hauppauge, NY 11788 Published: 02/16/2026



COMPLIANCE FOR RETAIL

Cannabinoid Profile Pass	Terpenes Total Tested	Residual Solvents Pass	Pass Sample Status 0.2845% Total THC 0.0008435% Total CBD 0.3006 % Total Cannabinoids
Pesticides Pass	Mycotoxins Pass	Water Activity Pass	
Trace Metals Pass	Microbial Contaminants Pass	Moisture Analysis Not Tested	
	Filth & Foreign Not Tested		

Report Notes: N/A

Kristofer Marsh, Ph.D.
 State Director

02/16/2026

Smithers CTS New York LLC
 49 John Hicks Drive
 Warwick, NY 10990
 (845) 202-9737



This is a Smithers CTS New York LLC certification that relates only to the material tested and shall not be reproduced, unless in its entirety, without written approval from Smithers CTS New York LLC. Test results are confidential, unless explicitly waived. Pass/Fail results do not use uncertainty, but is available upon request. The product represented has been tested by Smithers CTS New York LLC using validated scientific methodologies. Note action levels are state determined thresholds for human safety and consumption. Acronym Definitions: ND - Not Detected, LOQ - Limit of Quantification, ULOQ - Upper Limit of Quantification; are terms used to describe the reliably measured smallest and largest concentrations. <LOQ denotes the result is above detection limit, but below quantifiable limit. CFU - Colony Forming Units. Cannabis Product Sampling SOP# SOP.T.20.010.



Gron NY
 Address: 425 Oser Ave
 Suite 3
 Hauppauge, NY 11788
 Contact Name:
 Contact Phone:
 License #: OCM-PROC-25-000273
 Sample ID: 2602SMNY0150.0616
 Metrc Tag: 1A4120300000196000000877



CERTIFICATE OF ANALYSIS
 Permit #: OCM-CPL-00004

Certificate: 14546.1

Average Cannabinoid Profile
Pass

Sample Analysis

Date: 02/13/2026 11:49 AM **SOP:** NY.SOPT.40.260
Analyzed By: HPLC **Sample Weight:** N/A
Analyst: Stephanie Knapp

Analyte	LOQ (%)	Average % (w/w)	mg/serving
Total Tetrahydrocannabinol (THC)	-	0.2845	9.958
Tetrahydrocannabinolic acid (THCA)	0.000491	<LOQ	<LOQ
Δ8-THC	0.000491	<LOQ	<LOQ
Δ9-THC	0.000491	0.2845	9.958
Δ10-THC-RS	0.000491	<LOQ	<LOQ
Δ10-THC-RR	0.000491	<LOQ	<LOQ
Total Cannabidiol (CBD)	-	0.0008435	0.02952
Cannabidiolic acid (CBDA)	0.000491	<LOQ	<LOQ
Cannabidiol (CBD)	0.000491	0.0008435	0.02952
Total Active Tetrahydrocannabivarin (THCV)	-	0.001258	0.04403
Tetrahydrocannabivarinic acid (THCVA)	0.000491	<LOQ	<LOQ
Δ9-THCV	0.000491	0.001258	0.04403
Total Active Cannabigerol (CBG)	-	0.007091	0.2482
Cannabigerolic acid (CBGA)	0.000491	<LOQ	<LOQ
Cannabigerol (CBG)	0.000491	0.007091	0.2482
Cannabidivarin (CBDV)	0.000491	<LOQ	<LOQ
Cannabinol (CBN)	0.000491	0.003543	0.124
Cannabichromene (CBC)	0.000491	0.003341	0.1169

Cannabinoid Totals	Average % (w/w)	mg/serving
Total Cannabinoids	0.3006	10.52

Total THC = THCa*0.877 + Δ9-THC
 Total CBD = CBDa*0.877 + CBD
 Total Cannabinoids = Sum of all analytes
 Total Active CBD = CBD + (0.877 x CBDA); Total Active CBG = CBG + (0.878 x CBGA);
 Total Active THC = (Δ9THC + Δ8THC + Δ10THC-RS + Δ10THC-RR) + (0.877 x THCA);
 Total Active THCV = THCV + (0.867 x THCVA);

Serving Weight: 3.5 g; Servings/Package: 10

Kristofer Marsh, Ph.D.

02/16/2026
Kristofer Marsh

State Director

Smithers CTS New York LLC
 49 John Hicks Drive
 Warwick, NY 10990
 (845) 202-9737



This is a Smithers CTS New York LLC certification that relates only to the material tested and shall not be reproduced, unless in its entirety, without written approval from Smithers CTS New York LLC. Test results are confidential, unless explicitly waived. Pass/Fail results do not use uncertainty, but is available upon request. The product represented has been tested by Smithers CTS New York LLC using validated scientific methodologies. Note action levels are state determined thresholds for human safety and consumption. Acronym Definitions: ND - Not Detected, LOQ - Limit of Quantification, ULOQ - Upper Limit of Quantification; are terms used to describe the reliably measured smallest and largest concentrations. <LOQ denotes the result is above detection limit, but below quantifiable limit. CFU - Colony Forming Units. Cannabis Product Sampling SOP# SOP.T.20.010.



Gron NY
 Address: 425 Oser Ave
 Suite 3
 Hauppauge, NY 11788
 Contact Name:
 Contact Phone:
 License #: OCM-PROC-25-000273
 Sample ID: 2602SMNY0150.0616
 Metrc Tag: 1A4120300000196000000877



SMITHERS

CERTIFICATE OF ANALYSIS

Permit #: OCM-CPL-00004

Certificate: 14546.1

Terpene Total

Tested (0.0000%)

Sample Analysis

Date: 02/16/2026 10:27 AM

SOP: NY.SOPT.40.090

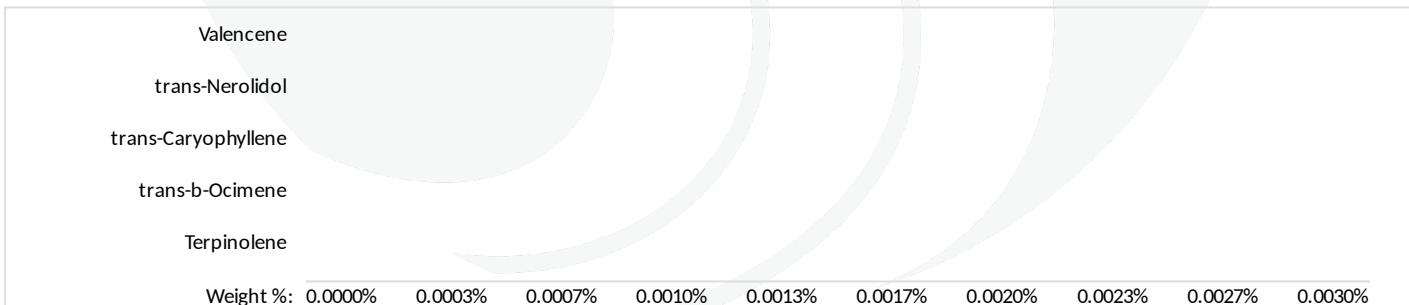
Sample Weight: 0.5155 g

Analyzed By: GC-MS

Analyst: Stephanie Knapp

Analyte	LOQ (%)	Results (%)	Analyte	LOQ (%)	Results (%)
3-Carene	0.0004200	<LOQ	Fenchol	0.0004000	<LOQ
alpha-Bisabolol	0.0005000	<LOQ	gamma-Terpinene	0.0004400	<LOQ
alpha-Humulene	0.0005600	<LOQ	gamma-Terpineol	0.0003000	<LOQ
alpha-Phellandrene	0.0006600	<LOQ	Geraniol	0.0004800	<LOQ
alpha-Pinene	0.0004800	<LOQ	Geranyl acetate	0.0006200	<LOQ
alpha-Terpinene	0.0002600	<LOQ	Guaiol	0.0006000	<LOQ
alpha-Terpineol	0.0003400	<LOQ	Isoborneol	0.0003400	<LOQ
beta-Myrcene	0.0006400	<LOQ	Isopulegol	0.0006600	<LOQ
beta-Pinene	0.0006600	<LOQ	Limonene	0.0007400	<LOQ
Borneol	0.0004600	<LOQ	Linalool	0.0004600	<LOQ
Camphene	0.0004400	<LOQ	Menthol	0.0004600	<LOQ
Camphor	0.0004000	<LOQ	Nerol	0.0005000	<LOQ
Caryophyllene oxide	0.0005800	<LOQ	Pulegone (+)	0.0005600	<LOQ
Cedrene	0.0004400	<LOQ	Sabinene	0.0003400	<LOQ
Cedrol	0.0005600	<LOQ	Sabinene Hydrate	0.0004200	<LOQ
cis-Nerolidol	0.0006800	<LOQ	Terpinolene	0.0005000	<LOQ
cis-Ocimene	0.0005200	<LOQ	trans-b-Ocimene	0.0004200	<LOQ
Eucalyptol	0.0007200	<LOQ	trans-Caryophyllene	0.0006600	<LOQ
Farnesene	0.0008400	<LOQ	trans-Nerolidol	0.0007200	<LOQ
Fenchone	0.0005000	<LOQ	Valencene	0.0005600	<LOQ

Terpene Totals	%	Pass/Fail
Total Terpenes	0	N/A



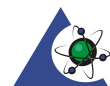
Kristofer Marsh, Ph.D.

02/16/2026

State Director

Smithers CTS New York LLC

49 John Hicks Drive
 Warwick, NY 10990
 (845) 202-9737



Accreditation #: 121747

This is a Smithers CTS New York LLC certification that relates only to the material tested and shall not be reproduced, unless in its entirety, without written approval from Smithers CTS New York LLC. Test results are confidential, unless explicitly waived. Pass/Fail results do not use uncertainty, but is available upon request. The product represented has been tested by Smithers CTS New York LLC using validated scientific methodologies. Note action levels are state determined thresholds for human safety and consumption. Acronym Definitions: ND - Not Detected, LOQ - Limit of Quantification, ULOQ - Upper Limit of Quantification; are terms used to describe the reliably measured smallest and largest concentrations. <LOQ denotes the result is above detection limit, but below quantifiable limit. CFU - Colony Forming Units. Cannabis Product Sampling SOP# SOP.T.20.010.



Gron NY
 Address: 425 Oser Ave
 Suite 3
 Hauppauge, NY 11788
 Contact Name:
 Contact Phone:
 License #: OCM-PROC-25-000273
 Sample ID: 2602SMNY0150.0616
 Metrc Tag: 1A4120300000196000000877



CERTIFICATE OF ANALYSIS
 Permit #: OCM-CPL-00004

Certificate: 14546.1

Residual Solvents

Pass

Sample Analysis

Date: 02/16/2026 12:31 PM

SOP: NYS.SOPT.040.272

Analyzed By: GC-MS

Sample Weight: 0.1003 g

Analyst: Stephanie Knapp

Analyte	LOQ (ppm)	Action Limit (ppm)	Results (ppm)	Pass/Fail
1,2-Dichloroethane (Ethylene dichloride, Ethylene chloride)	0.100	5.00	<LOQ	PASS
2-Propanol (Isopropanol, Isopropyl alcohol)	125	5000	<LOQ	PASS
Acetone (2-Propanone)	125	5000	<LOQ	PASS
Acetonitrile	23.6	410	<LOQ	PASS
Benzene	0.100	2.00	<LOQ	PASS
Butanes, Total	62.5	5000	<LOQ	PASS
Chloroform	1.50	60.0	<LOQ	PASS
Dichloromethane (Methylene chloride)	15.0	600	<LOQ	PASS
Dimethyl sulfoxide (DMSO)	125	5000	<LOQ	PASS
Ethanol (Ethyl alcohol)	125	5000	<LOQ	PASS
Ethyl acetate (Acetic acid ethyl ester)	125	5000	<LOQ	PASS
Ethyl ether (Diethyl ether, 1,1'-Oxybisethane)	125	5000	<LOQ	PASS
Heptane (n-Heptane)	125	5000	<LOQ	PASS
Hexanes, Total	14.5	290	<LOQ	PASS
Methanol (Methyl alcohol)	75.1	3000	<LOQ	PASS
Pentanes, Total	195	5000	<LOQ	PASS
Propane	63.0	5000	<LOQ	PASS
Toluene (Methylbenzene)	22.3	890	<LOQ	PASS
Trichloroethane (1,1,1-)	37.6	1500	<LOQ	PASS
Tetrafluoroethane (1,1,1,2-) (HFC134a)*	10.0	1000	<LOQ	PASS
Xylenes, Total (ortho-, meta-, para-)	109	2170	<LOQ	PASS

Kristofer Marsh, Ph.D.

02/16/2026

State Director

Smithers CTS New York LLC
 49 John Hicks Drive
 Warwick, NY 10990
 (845) 202-9737



Accreditation #: 121747

This is a Smithers CTS New York LLC certification that relates only to the material tested and shall not be reproduced, unless in its entirety, without written approval from Smithers CTS New York LLC. Test results are confidential, unless explicitly waived. Pass/Fail results do not use uncertainty, but is available upon request. The product represented has been tested by Smithers CTS New York LLC using validated scientific methodologies. Note action levels are state determined thresholds for human safety and consumption. Acronym Definitions: ND - Not Detected, LOQ - Limit of Quantification, ULOQ - Upper Limit of Quantification; are terms used to describe the reliably measured smallest and largest concentrations. <LOQ* denotes the result is above detection limit, but below quantifiable limit. CFU - Colony Forming Units. Cannabis Product Sampling SOP# SOP.T.20.010.



Gron NY
 Address: 425 Oser Ave
 Suite 3
 Hauppauge, NY 11788
 Contact Name:
 Contact Phone:
 License #: OCM-PROC-25-000273
 Sample ID: 2602SMNY0150.0616
 Metrc Tag: 1A4120300000196000000877



CERTIFICATE OF ANALYSIS
 Permit #: OCM-CPL-00004

Certificate: 14546.1

Trace Metals

Pass

Sample Analysis

Date: 02/12/2026 09:34 AM
 Analyzed By: ICP-MS
 Analyst: Moni Kaneti

SOP: NY.SOPT.40.050
 Sample Weight: 0.1266 g

Analyte	LOQ (µg/g)	Action Limit (µg/g)	Results (µg/g)	Pass/Fail
Antimony (Sb)	0.200	120	<LOQ	PASS
Arsenic (As)	0.200	1.50	<LOQ	PASS
Cadmium (Cd)	0.200	0.500	<LOQ	PASS
Chromium (Cr)	0.200	1100	<LOQ	PASS
Copper (Cu)	0.200	300	0.282	PASS
Lead (Pb)	0.200	0.500	<LOQ	PASS
Mercury (Hg)	0.0400	3.00	<LOQ	PASS
Nickel (Ni)	0.200	20.0	<LOQ	PASS

Mycotoxin Analysis

Pass

Sample Analysis

Date: 02/13/2026 10:45 AM
 Analyzed By: LC-MS/MS
 Analyst: Destiny Ribadeneyra

SOP: NY.SOPT.40.180
 Sample Weight: 0.0951 g

Analyte	LOQ (µg/g)	Action Limit (µg/g)	Results (µg/g)	Pass/Fail
Sum of Aflatoxins	-	0.020	<LOQ	PASS
Aflatoxin B1	0.0010	0.020	<LOQ	PASS
Aflatoxin B2	0.0020	0.020	<LOQ	PASS
Aflatoxin G1	0.0010	0.020	<LOQ	PASS
Aflatoxin G2	0.0020	0.020	<LOQ	PASS
Ochratoxin A	0.0020	0.020	<LOQ	PASS

Kristofer Marsh, Ph.D.

02/16/2026

State Director

Smithers CTS New York LLC
 49 John Hicks Drive
 Warwick, NY 10990
 (845) 202-9737



This is a Smithers CTS New York LLC certification that relates only to the material tested and shall not be reproduced, unless in its entirety, without written approval from Smithers CTS New York LLC. Test results are confidential, unless explicitly waived. Pass/Fail results do not use uncertainty, but is available upon request. The product represented has been tested by Smithers CTS New York LLC using validated scientific methodologies. Note action levels are state determined thresholds for human safety and consumption. Acronym Definitions: ND - Not Detected, LOQ - Limit of Quantification, ULOQ - Upper Limit of Quantification; are terms used to describe the reliably measured smallest and largest concentrations. <LOQ denotes the result is above detection limit, but below quantifiable limit. CFU - Colony Forming Units. Cannabis Product Sampling SOP# SOP.T.20.010.



Gron NY
 Address: 425 Oser Ave
 Suite 3
 Hauppauge, NY 11788
 Contact Name:
 Contact Phone:
 License #: OCM-PROC-25-000273
 Sample ID: 2602SMNY0150.0616
 Metrc Tag: 1A4120300000196000000877



SMITHERS

CERTIFICATE OF ANALYSIS

Permit #: OCM-CPL-00004

Certificate: 14546.1

Pesticides LC

Pass

Sample Analysis

Date: 02/16/2026 12:25 PM

SOP: NY.SOPT.040.270

Analyzed By: LC-MS/MS

Sample Weight: 0.9885 g

Analyst: Destiny Ribadeneyra

Analyte	LOQ (ppm)	Action Limit (ppm)	Results (ppm)	Pass/Fail	Analyte	LOQ (ppm)	Action Limit (ppm)	Results (ppm)	Pass/Fail
Abamectin	0.0180	0.500	<LOQ	PASS	Imidacloprid	0.00800	0.400	<LOQ	PASS
Acephate	0.00700	0.400	<LOQ	PASS	Indole-3-butyric acid	0.00700	1.00	<LOQ	PASS
Acequinocyl	0.0160	2.00	<LOQ	PASS	Kresoxim methyl	0.0120	0.400	<LOQ	PASS
Acetamiprid	0.00500	0.200	<LOQ	PASS	Malathion	0.0110	0.200	<LOQ	PASS
Aldicarb	0.00500	0.400	<LOQ	PASS	Metalaxyl	0.0120	0.200	<LOQ	PASS
Azadirachtin	0.0220	1.00	<LOQ	PASS	Methiocarb	0.00400	0.200	<LOQ	PASS
Azoxystrobin	0.00600	0.200	<LOQ	PASS	Methomyl	0.0120	0.400	<LOQ	PASS
Bifenazate	0.00600	0.200	<LOQ	PASS	Mevinphos	0.0190	1.00	<LOQ	PASS
Bifenthrin	0.00300	0.200	<LOQ	PASS	MGK-264	0.0110	0.200	<LOQ	PASS
Boscalid	0.0110	0.400	<LOQ	PASS	Myclobutanil	0.0130	0.200	<LOQ	PASS
Carbaryl	0.00600	0.200	<LOQ	PASS	Naled	0.00500	0.500	<LOQ	PASS
Carbofuran	0.00500	0.200	<LOQ	PASS	Oxamyl	0.00800	1.00	<LOQ	PASS
Chlorantraniliprole	0.00600	0.200	<LOQ	PASS	Paclobutrazol	0.0150	0.400	<LOQ	PASS
Chloromequat chloride	0.0190	1.00	<LOQ	PASS	Permethrins, Total	0.00900	0.200	<LOQ	PASS
Chlorpyrifos	0.00900	0.200	<LOQ	PASS	Phosmet	0.00700	0.200	<LOQ	PASS
Clofentezine	0.0100	0.200	<LOQ	PASS	Piperonyl Butoxide	0.00600	2.00	<LOQ	PASS
Daminozide	0.00400	1.00	<LOQ	PASS	Prallethrin	0.00800	0.200	<LOQ	PASS
Diazinon	0.00700	0.200	<LOQ	PASS	Propiconazole	0.00600	0.400	<LOQ	PASS
Dichlorvos	0.0120	1.00	<LOQ	PASS	Propoxur	0.00800	0.200	<LOQ	PASS
Dimethoate	0.00600	0.200	<LOQ	PASS	Pyrethrins	0.0140	1.00	<LOQ	PASS
Dimethomorph	0.00500	1.00	<LOQ	PASS	Pyridaben	0.00600	0.200	<LOQ	PASS
Ethoprophos	0.0130	0.200	<LOQ	PASS	Spinetoram, Total	0.00500	1.00	<LOQ	PASS
Etofenprox	0.00300	0.400	<LOQ	PASS	Spinosad, Total	0.00600	0.200	<LOQ	PASS
Etoxazole	0.00500	0.200	<LOQ	PASS	Spiromesifen	0.0130	0.200	<LOQ	PASS
Fenhexamid	0.0150	1.00	<LOQ	PASS	Spirotetramat	0.00600	0.200	<LOQ	PASS
Fenoxycarb	0.0110	0.200	<LOQ	PASS	Spiroxamine	0.00400	0.200	<LOQ	PASS
Fenpyroximate	0.00200	0.400	<LOQ	PASS	Tebuconazole	0.0120	0.400	<LOQ	PASS
Flonicamid	0.00700	1.00	<LOQ	PASS	Thiacloprid	0.00800	0.200	<LOQ	PASS
Fludioxonil	0.0170	0.400	<LOQ	PASS	Thiamethoxam	0.00800	0.200	<LOQ	PASS
Hexythiazox	0.00500	1.00	<LOQ	PASS					

Kristofer Marsh, Ph.D.

02/16/2026

State Director

Smithers CTS New York LLC
 49 John Hicks Drive
 Warwick, NY 10990
 (845) 202-9737



Accreditation #: 121747

This is a Smithers CTS New York LLC certification that relates only to the material tested and shall not be reproduced, unless in its entirety, without written approval from Smithers CTS New York LLC. Test results are confidential, unless explicitly waived. Pass/Fail results do not use uncertainty, but is available upon request. The product represented has been tested by Smithers CTS New York LLC using validated scientific methodologies. Note action levels are state determined thresholds for human safety and consumption. Acronym Definitions: ND - Not Detected, LOQ - Limit of Quantification, ULOQ - Upper Limit of Quantification; are terms used to describe the reliably measured smallest and largest concentrations. <LOQ denotes the result is above detection limit, but below quantifiable limit. CFU - Colony Forming Units. Cannabis Product Sampling SOP# SOP.T.20.010.



Gron NY
 Address: 425 Oser Ave
 Suite 3
 Hauppauge, NY 11788
 Contact Name:
 Contact Phone:
 License #: OCM-PROC-25-000273
 Sample ID: 2602SMNY0150.0616
 Metrc Tag: 1A4120300000196000000877



CERTIFICATE OF ANALYSIS
 Permit #: OCM-CPL-00004

Certificate: 14546.1

Pesticides GC

Pass

Sample Analysis

Date: 02/16/2026 12:22 PM

SOP: NYS.SOPT.040.271

Analyzed By: GC-MS/MS

Sample Weight: N/A

Analyst: Destiny Ribadeneyra

Analyte	LOQ (ppm)	Action Limit (ppm)	Results (ppm)	Pass/Fail
Captan	0.300	1.00	<LOQ	PASS
Chlordane	0.0700	1.00	<LOQ	PASS
Chlorfenapyr	0.100	1.00	<LOQ	PASS
Coumaphos	0.190	1.00	<LOQ	PASS
Cyfluthrin	0.110	1.00	<LOQ	PASS
Cypermethrin	0.240	1.00	<LOQ	PASS
Fipronil	0.170	0.400	<LOQ	PASS
Imazalil	0.170	0.200	<LOQ	PASS
Methyl parathion	0.0900	0.200	<LOQ	PASS
Pentachloronitrobenzene	0.170	1.00	<LOQ	PASS
Trifloxystrobin	0.110	0.200	<LOQ	PASS

Kristofer Marsh, Ph.D.

02/16/2026

State Director

Smithers CTS New York LLC
 49 John Hicks Drive
 Warwick, NY 10990
 (845) 202-9737



Accreditation #: 121747

This is a Smithers CTS New York LLC certification that relates only to the material tested and shall not be reproduced, unless in its entirety, without written approval from Smithers CTS New York LLC. Test results are confidential, unless explicitly waived. Pass/Fail results do not use uncertainty, but is available upon request. The product represented has been tested by Smithers CTS New York LLC using validated scientific methodologies. Note action levels are state determined thresholds for human safety and consumption. Acronym Definitions: ND - Not Detected, LOQ - Limit of Quantification, ULOQ - Upper Limit of Quantification; are terms used to describe the reliably measured smallest and largest concentrations. <LOQ denotes the result is above detection limit, but below quantifiable limit. CFU - Colony Forming Units. Cannabis Product Sampling SOP# SOP.T.20.010.



Gron NY
 Address: 425 Oser Ave
 Suite 3
 Hauppauge, NY 11788
 Contact Name:
 Contact Phone:
 License #: OCM-PROC-25-000273
 Sample ID: 2602SMNY0150.0616
 Metrc Tag: 1A4120300000196000000877



SMITHERS

CERTIFICATE OF ANALYSIS

Permit #: OCM-CPL-00004

Certificate: 14546.1

Microbial Impurities - MDG

Pass

Sample Analysis

Date: 02/16/2026 05:16 PM SOP: NYS.SOPT.40.273
 Analyzed By: PCR
 Analyst: Kristy Lee

Analyte	Microbial Type	LOQ (CFU/g)	Allowable Limit	Results	Pass/Fail
Shiga toxin-producing Escherichia coli	Bacterial	1	Not Detected	Not Detected	PASS
Salmonella species	Bacterial	1	Not Detected	Not Detected	PASS
Aspergillus flavus	Fungal	1	Not Detected	Not Detected	PASS
Aspergillus niger	Fungal	1	Not Detected	Not Detected	PASS
Aspergillus terreus	Fungal	1	Not Detected	Not Detected	PASS
Aspergillus fumigatus	Fungal	1	Not Detected	Not Detected	PASS

Microbial Impurities - TAPC

Pass

Sample Analysis

Date: 02/13/2026 04:23 PM SOP: NYS.SOPT.040.200
 Analyzed By: Plating
 Analyst: Lindsey Vento

Analyte	LOQ (CFU/g)	Action Limit (CFU/g)	Results (CFU/g)	Pass/Fail
Total Aerobic Bacteria/CDP-TC	100	10000	<LOQ	PASS

Microbial Impurities - TYMC

Pass

Sample Analysis

Date: 02/16/2026 05:07 PM SOP: NYS.SOPT.040.200
 Analyzed By: Plating
 Analyst: Kristy Lee

Analyte	LOQ (CFU/g)	Action Limit (CFU/g)	Results (CFU/g)	Pass/Fail
Total Yeast and Mold	100	1000	<LOQ	PASS

Kristofer Marsh, Ph.D.
 State Director

02/16/2026

Smithers CTS New York LLC
 49 John Hicks Drive
 Warwick, NY 10990
 (845) 202-9737



This is a Smithers CTS New York LLC certification that relates only to the material tested and shall not be reproduced, unless in its entirety, without written approval from Smithers CTS New York LLC. Test results are confidential, unless explicitly waived. Pass/Fail results do not use uncertainty, but is available upon request. The product represented has been tested by Smithers CTS New York LLC using validated scientific methodologies. Note action levels are state determined thresholds for human safety and consumption. Acronym Definitions: ND - Not Detected, LOQ - Limit of Quantification, ULOQ - Upper Limit of Quantification; are terms used to describe the reliably measured smallest and largest concentrations. <LOQ denotes the result is above detection limit, but below quantifiable limit. CFU - Colony Forming Units. Cannabis Product Sampling SOP# SOPT.20.010.



Gron NY
 Address: 425 Oser Ave
 Suite 3
 Hauppauge, NY 11788
 Contact Name:
 Contact Phone:
 License #: OCM-PROC-25-000273
 Sample ID: 2602SMNY0150.0616
 Metrc Tag: 1A4120300000196000000877



CERTIFICATE OF ANALYSIS
 Permit #: OCM-CPL-00004

Certificate: 14546.1

Water Activity

Pass

Sample Analysis

Date: 02/11/2026 04:36 PM **SOP:** NY.SOPT.040.210
Analyzed By: Water Activity Meter
Analyst: Dylan Kane

Analyte	LOQ (Aw)	Action Limit (Aw)	Results (Aw)	Pass/Fail
Water Activity	0.25	0.85	0.65	PASS



Kristofer Marsh, Ph.D.
 State Director

02/16/2026
Kristofer Marsh

Smithers CTS New York LLC
 49 John Hicks Drive
 Warwick, NY 10990
 (845) 202-9737



This is a Smithers CTS New York LLC certification that relates only to the material tested and shall not be reproduced, unless in its entirety, without written approval from Smithers CTS New York LLC. Test results are confidential, unless explicitly waived. Pass/Fail results do not use uncertainty, but is available upon request. The product represented has been tested by Smithers CTS New York LLC using validated scientific methodologies. Note action levels are state determined thresholds for human safety and consumption. Acronym Definitions: ND - Not Detected, LOQ - Limit of Quantification, ULOQ - Upper Limit of Quantification; are terms used to describe the reliably measured smallest and largest concentrations. <LOQ denotes the result is above detection limit, but below quantifiable limit. CFU - Colony Forming Units. Cannabis Product Sampling SOP# SOP.T.20.010.