



Token Heights Cannabis Farm LLC
 Address: 920 Edie Rd., Argyle NY 12809
 Contact Name:
 Contact Phone:
 License #: OCM-AUCC-22000174
 Sample ID: 2410SMNY0196.0788



Phyto-Farma Labs
 a Smithers company

CERTIFICATE OF ANALYSIS
 Permit #: OCM-CPL-00004

Certificate: 6676.1

OG Kush

Lot #: aucc174ogk040124 Lot Size: 1298
 Sample ID: 2410SMNY0196.0788 Sample Type: Flower
 Regulatory Category: Adult Use Amount Received: 13
 Received: 10/09/2024 Sample Collected: 10/09/2024 09:37 AM
 Sampling Location: 920 Edie Road Argyle NY 12809 Published: 10/16/2024



COMPLIANCE FOR RETAIL

Cannabinoid Profile Pass	Terpenes Total Pass	Residual Solvents Not Tested	Pass Sample Status
Pesticides Pass	Mycotoxins Pass	Water Activity Pass	19.4% Total THC
Trace Metals Pass	Microbial Contaminants Pass	Moisture Analysis Pass	0.994% Total CBD
	Filth & Foreign Pass		22.5 % Total Cannabinoids

Report Notes: N/A

Alicia Caruso-Thomas
 Laboratory Director

10/16/2024
Alicia Caruso-Thomas

Phyto-Farma Labs
 49 John Hicks Drive
 Warwick, NY 10990
 (845) 202-9737



This is a Phyto-Farma certification that relates only to the material tested and shall not be reproduced, unless in its entirety, without written approval from Phyto-Farma. Test results are confidential, unless explicitly waived. All Pass/Fail results please reference state regulations released on 01FEB2024. Pass/Fail results do not use uncertainty, but is available upon request. The product represented has been tested by Phyto-Farma Labs using validated scientific methodologies. Note action levels are state determined thresholds for human safety and consumption. Acronym Definitions: ND - Not Detected, LOQ - Limit of Quantification, ULOQ - Upper Limit of Quantification; are terms used to describe the reliably measured smallest and largest concentrations. <LOQ> denotes the result is above detection limit, but below quantifiable limit. CFU - Colony Forming Units. Cannabis Product Sampling SOP# SOP.T.20.010.



Token Heights Cannabis Farm LLC
 Address: 920 Edie Rd., Argyle NY 12809
 Contact Name:
 Contact Phone:
 License #: OCM-AUCC-22000174
 Sample ID: 2410SMNY0196.0788

CERTIFICATE OF ANALYSIS

Permit #: OCM-CPL-00004

Certificate: 6676.1

Average Cannabinoid Profile

Pass

Sample Analysis

Date: 10/16/2024 10:33 AM

SOP: NY.SOPT.40.260

Analyzed By: HPLC

Sample Weight: N/A

Analyst: Stephanie Knapp

Analyte	LOQ (%)	Average % (w/w)	mg/serving	Homogeneity [†]
Total Tetrahydrocannabinol (THC)	-	19.4	194	
Tetrahydrocannabinolic acid (THCA)	0.500	21.7	217	
Δ8-THC	0.500	0.0437	0.437	
Δ9-THC	0.500	0.362	3.62	
Δ10-THC-RS	0.500	<LOQ	<LOQ	
Δ10-THC-RR	0.500	<LOQ	<LOQ	
Total Cannabidiol (CBD)	-	0.994	9.94	
Cannabinadiolic acid (CBDA)	0.500	1.04	10.4	
Cannabidiol (CBD)	0.500	0.0817	0.817	
Total Active Tetrahydrocannabivarin (THCV)	-	0.193	1.93	
Tetrahydrocannabivarinic acid (THCVA)*	0.500	0.223	2.23	
Tetrahydrocannabivarin (THCV)	0.500	<LOQ	<LOQ	
Total Active Cannabigerol (CBG)	-	1.84	18.4	
Cannabigerolic acid (CBGA)	0.500	1.93	19.3	
Cannabigerol (CBG)	0.500	0.146	1.46	
Cannabidivarin (CBDV)	0.500	0.0449	0.449	
Cannabinol (CBN)	0.500	<LOQ	<LOQ	
Cannabichromene (CBC)	0.500	<LOQ	<LOQ	

Cannabinoid Totals	Actual % (w/w)	mg/serving	Homogeneity [†]
Total Cannabinoids	22.5	225	

* Analyte is not included in ISO 17025 scope of accreditation

† Concentration of individual samples must be ±25% of the mean concentration

Total Active CBD = CBD + (0.877 x CBDA); Total Active CBG = CBG + (0.878 x CBGA);

Total Active THC = (Δ9THC + Δ8THC + Δ10THC-RS + Δ10THC-RR) + (0.877 x THCA);

Total Active THCV = THCV + (0.867 x THCVA);

Serving Weight: 1g

Alicia Caruso-Thomas

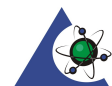
10/16/2024

Alicia Caruso-Thomas

Laboratory Director

Phyto-Farma Labs

49 John Hicks Drive
 Warwick, NY 10990
 (845) 202-9737



Accreditation #: 121747



Token Heights Cannabis Farm LLC
 Address: 920 Edie Rd., Argyle NY 12809
 Contact Name:
 Contact Phone:
 License #: OCM-AUCC-22000174
 Sample ID: 2410SMNY0196.0788

Certificate: 6676.1

Terpene Total

Pass (1.600%)

Sample Analysis

Date: 10/16/2024 03:22 PM

SOP: NY.SOPT.40.090

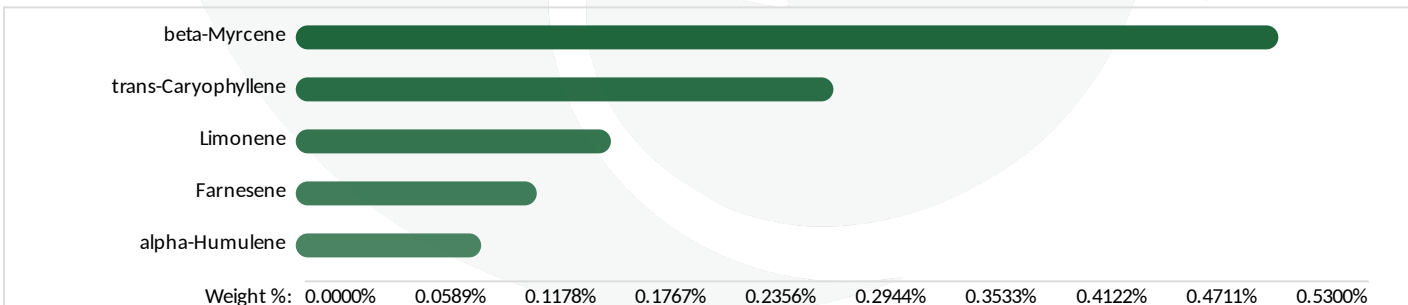
Sample Weight: 0.1811 g

Analyzed By: GC-MS

Analyst: Stephanie Knapp

Analyte	LOQ (%)	Results (%)	Analyte	LOQ (%)	Results (%)
3-Carene	0.0004200	<LOQ	gamma-Terpinene	0.0004400	<LOQ
alpha-Bisabolol	0.0005000	<LOQ	gamma-Terpineol	0.0003000	<LOQ
alpha-Humulene	0.0005600	0.1000	Geraniol	0.0004800	<LOQ
alpha-Phellandrene	0.0006600	<LOQ	Geranyl acetate	0.0006200	<LOQ
alpha-Pinene	0.0004800	0.02000	Guaiol	0.0006000	0.06000
alpha-Terpinene	0.0002600	<LOQ	Isoborneol	0.0003400	0.01000
alpha-Terpineol	0.0003400	0.03000	Isopulegol	0.0006600	<LOQ
beta-Myrcene	0.0006400	0.5300	Limonene	0.0007400	0.1700
beta-Pinene	0.0006600	0.02000	Linalool	0.0004600	0.08000
Borneol	0.0004600	0.01000	Menthol	0.0004600	<LOQ
Camphene	0.0004400	<LOQ	Nerol	0.0005000	<LOQ
Camphor	0.0004000	<LOQ	Pulegone (+)	0.0005600	<LOQ
Caryophyllene oxide	0.0005800	0.02000	Sabinene	0.0003400	0.03000
Cedrene	0.0004400	<LOQ	Sabinene Hydrate	0.0004200	<LOQ
Cedrol	0.0005600	<LOQ	Terpinolene	0.0005000	<LOQ
cis-Nerolidol	0.0006800	0.02000	trans-b-Ocimene	0.0004200	<LOQ
cis-Ocimene	0.0005200	<LOQ	trans-Caryophyllene	0.0006600	0.2900
Eucalyptol	0.0007200	0.01000	trans-Nerolidol	0.0007200	0.03000
Farnesene	0.0008400	0.1300	Valencene	0.0005600	0.02000
Fenchone	0.0005000	<LOQ			

Terpene Totals	%	Pass/Fail
Total Terpenes	1.600	PASS



Alicia Caruso-Thomas
 Laboratory Director

10/16/2024
Alicia Caruso-Thomas

Phyto-Farma Labs
 49 John Hicks Drive
 Warwick, NY 10990
 (845) 202-9737



This is a Phyto-Farma certification that relates only to the material tested and shall not be reproduced, unless in its entirety, without written approval from Phyto-Farma. Test results are confidential, unless explicitly waived. All Pass/Fail results please reference state regulations released on 01FEB2024. Pass/Fail results do not use uncertainty, but is available upon request. The product represented has been tested by Phyto-Farma Labs using validated scientific methodologies. Note action levels are state determined thresholds for human safety and consumption. Acronym Definitions: ND - Not Detected, LOQ - Limit of Quantification, ULOQ - Upper Limit of Quantification; are terms used to describe the reliably measured smallest and largest concentrations. <LOQ* denotes the result is above detection limit, but below quantifiable limit. CFU - Colony Forming Units. Cannabis Product Sampling SOP# SOP.T.20.010.



Token Heights Cannabis Farm LLC
 Address: 920 Edie Rd., Argyle NY 12809
 Contact Name:
 Contact Phone:
 License #: OCM-AUCC-22000174
 Sample ID: 2410SMNY0196.0788



Phyto-Farma Labs
 a Smithers company

CERTIFICATE OF ANALYSIS

Permit #: OCM-CPL-00004

Certificate: 6676.1

Trace Metals

Pass

Sample Analysis

Date: 10/15/2024 12:39 PM

SOP: NY.SOPT.40.050

Analyzed By: ICP-MS

Sample Weight: 0.1327 g

Analyst: Moni Kaneti

Analyte	LOQ (µg/g)	Action Limit (µg/g)	Results (µg/g)	Pass/Fail
Antimony (Sb)*	0.130	2.00	<LOQ	PASS
Arsenic (As)*	0.0700	0.200	<LOQ	PASS
Cadmium (Cd)*	0.0600	0.200	0.0660	PASS
Chromium (Cr)*	0.360	110	<LOQ	PASS
Copper (Cu)*	0.390	30.0	15.8	PASS
Lead (Pb)*	0.0800	0.500	0.129	PASS
Mercury (Hg)*	0.0100	0.100	0.0140	PASS
Nickel (Ni)*	0.110	5.00	1.19	PASS

* Analyte is not included in ISO 17025 scope of accreditation

Mycotoxin Analysis

Pass

Sample Analysis

Date: 10/16/2024 10:34 AM

SOP: NY.SOPT.40.180

Analyzed By: LC-MS/MS

Sample Weight: 0.1 g

Analyst: Destiny Ribadeneyra

Analyte	LOQ (µg/g)	Action Limit (µg/g)	Results (µg/g)	Pass/Fail
Sum of Aflatoxins	-	0.020	0	PASS
Aflatoxin B1	0.0010	0.020	<LOQ	PASS
Aflatoxin B2	0.0020	0.020	<LOQ	PASS
Aflatoxin G1	0.0010	0.020	<LOQ	PASS
Aflatoxin G2	0.0020	0.020	<LOQ	PASS
Ochratoxin A	0.0020	0.020	<LOQ	PASS

Alicia Caruso-Thomas
 Laboratory Director

10/16/2024
Alicia Caruso-Thomas

Phyto-Farma Labs
 49 John Hicks Drive
 Warwick, NY 10990
 (845) 202-9737



This is a Phyto-Farma certification that relates only to the material tested and shall not be reproduced, unless in its entirety, without written approval from Phyto-Farma. Test results are confidential, unless explicitly waived. All Pass/Fail results please reference state regulations released on 01FEB2024. Pass/Fail results do not use uncertainty, but is available upon request. The product represented has been tested by Phyto-Farma Labs using validated scientific methodologies. Note action levels are state determined thresholds for human safety and consumption. Acronym Definitions: ND - Not Detected, LOQ - Limit of Quantification, ULOQ - Upper Limit of Quantification; are terms used to describe the reliably measured smallest and largest concentrations. <LOQ* denotes the result is above detection limit, but below quantifiable limit. CFU - Colony Forming Units. Cannabis Product Sampling SOP# SOP.T.20.010.



Token Heights Cannabis Farm LLC
 Address: 920 Edie Rd., Argyle NY 12809
 Contact Name:
 Contact Phone:
 License #: OCM-AUCC-22000174
 Sample ID: 2410SMNY0196.0788

CERTIFICATE OF ANALYSIS
 Permit #: OCM-CPL-00004

Certificate: 6676.1

Pesticides LC

Pass

Sample Analysis

Date: 10/16/2024 03:51 PM

SOP: NY.SOPT.040.270

Analyzed By: LC-MS/MS

Sample Weight: 1 g

Analyst: Destiny Ribadeneyra

Analyte	LOQ (ppm)	Action Limit (ppm)	Results (ppm)	Pass/Fail	Analyte	LOQ (ppm)	Action Limit (ppm)	Results (ppm)	Pass/Fail
Abamectin*	0.0180	0.500	<LOQ	PASS	Imidacloprid*	0.00800	0.400	<LOQ	PASS
Acephate*	0.00700	0.400	<LOQ	PASS	Indole-3-butyric acid*	0.00700	1.00	<LOQ	PASS
Acequinocyl*	0.0160	2.00	<LOQ	PASS	Kresoxim methyl*	0.0120	0.400	<LOQ	PASS
Acetamiprid*	0.00500	0.200	<LOQ	PASS	Malathion*	0.0110	0.200	<LOQ	PASS
Aldicarb*	0.00500	0.400	<LOQ	PASS	Metalaxyl*	0.0120	0.200	<LOQ	PASS
Azadirachtin*	0.0220	1.00	<LOQ	PASS	Methiocarb*	0.00400	0.200	<LOQ	PASS
Azoxystrobin*	0.00600	0.200	<LOQ	PASS	Methomyl*	0.0120	0.400	<LOQ	PASS
Bifenazate*	0.00600	0.200	<LOQ	PASS	Mevinphos*	0.0190	1.00	<LOQ	PASS
Bifenthrin*	0.00300	0.200	<LOQ	PASS	MGK-264*	0.0110	0.200	<LOQ	PASS
Boscalid*	0.0110	0.400	<LOQ	PASS	Myclobutanil*	0.0130	0.200	<LOQ	PASS
Carbaryl*	0.00600	0.200	<LOQ	PASS	Naled*	0.00500	0.500	<LOQ	PASS
Carbofuran*	0.00500	0.200	<LOQ	PASS	Oxamyl*	0.00800	1.00	<LOQ	PASS
Chlorantraniliprole*	0.00600	0.200	<LOQ	PASS	Paclobutrazol*	0.0150	0.400	<LOQ	PASS
Chloromequat chloride*	0.0190	1.00	<LOQ	PASS	Permethrins, Total*	0.00900	0.200	<LOQ	PASS
Chlorpyrifos*	0.00900	0.200	<LOQ	PASS	Phosmet*	0.00700	0.200	<LOQ	PASS
Clofentezine*	0.0100	0.200	<LOQ	PASS	Piperonyl Butoxide*	0.00600	2.00	<LOQ	PASS
Daminozide*	0.00400	1.00	<LOQ	PASS	Prallethrin*	0.00800	0.200	<LOQ	PASS
Diazinon*	0.00700	0.200	<LOQ	PASS	Propiconazole*	0.00600	0.400	<LOQ	PASS
Dichlorvos*	0.0120	1.00	<LOQ	PASS	Propoxur*	0.00800	0.200	<LOQ	PASS
Dimethoate*	0.00600	0.200	<LOQ	PASS	Pyrethrins*	0.0140	1.00	<LOQ	PASS
Dimethomorph*	0.00500	1.00	<LOQ	PASS	Pyridaben*	0.00600	0.200	<LOQ	PASS
Ethoprophos*	0.0130	0.200	<LOQ	PASS	Spinetoram, Total*	0.00500	1.00	<LOQ	PASS
Etofenprox*	0.00300	0.400	<LOQ	PASS	Spinosad, Total*	0.00600	0.200	<LOQ	PASS
Etoxazole*	0.00500	0.200	<LOQ	PASS	Spiromesifen*	0.0130	0.200	<LOQ	PASS
Fenhexamid*	0.0150	1.00	<LOQ	PASS	Spirotetramat*	0.00600	0.200	<LOQ	PASS
Fenoxycarb*	0.0110	0.200	<LOQ	PASS	Spiroxamine*	0.00400	0.200	<LOQ	PASS
Fenpyroximate*	0.00200	0.400	<LOQ	PASS	Tebuconazole*	0.0120	0.400	<LOQ	PASS
Fonicamid*	0.00700	1.00	<LOQ	PASS	Thiacloprid*	0.00800	0.200	<LOQ	PASS
Fludioxonil*	0.0170	0.400	<LOQ	PASS	Thiamethoxam*	0.00800	0.200	<LOQ	PASS
Hexythiazox*	0.00500	1.00	<LOQ	PASS					

* Analyte is not included in ISO 17025 scope of accreditation

Alicia Caruso-Thomas
 Laboratory Director

10/16/2024
Alicia Caruso-Thomas

Phyto-Farma Labs
 49 John Hicks Drive
 Warwick, NY 10990
 (845) 202-9737



This is a Phyto-Farma certification that relates only to the material tested and shall not be reproduced, unless in its entirety, without written approval from Phyto-Farma. Test results are confidential, unless explicitly waived. All Pass/Fail results please reference state regulations released on 01FEB2024. Pass/Fail results do not use uncertainty, but is available upon request. The product represented has been tested by Phyto-Farma Labs using validated scientific methodologies. Note action levels are state determined thresholds for human safety and consumption. Acronym Definitions: ND - Not Detected, LOQ - Limit of Quantification, ULOQ - Upper Limit of Quantification, are terms used to describe the reliably measured smallest and largest concentrations. <LOQ* denotes the result is above detection limit, but below quantifiable limit. CFU - Colony Forming Units. Cannabis Product Sampling SOP# SOP.T.20.010.



Token Heights Cannabis Farm LLC
 Address: 920 Edie Rd., Argyle NY 12809
 Contact Name:
 Contact Phone:
 License #: OCM-AUCC-22000174
 Sample ID: 2410SMNY0196.0788



Phyto-Farma Labs
 a Smithers company

CERTIFICATE OF ANALYSIS

Permit #: OCM-CPL-00004

Certificate: 6676.1

Pesticides GC

Pass

Sample Analysis

Date: 10/16/2024 03:57 PM

SOP: NYS.SOPT.040.271

Analyzed By: GC-MS/MS

Sample Weight: N/A

Analyst: Destiny Ribadeneyra

Analyte	LOQ (ppm)	Action Limit (ppm)	Results (ppm)	Pass/Fail
Captan*	0.300	1.00	<LOQ	PASS
Chlordane*	0.0700	1.00	<LOQ	PASS
Chlorfenapyr*	0.100	1.00	<LOQ	PASS
Coumaphos*	0.190	1.00	<LOQ	PASS
Cyfluthrin*	0.110	1.00	<LOQ	PASS
Cypermethrin*	0.240	1.00	<LOQ	PASS
Fipronil*	0.170	0.400	<LOQ	PASS
Imazalil*	0.170	0.200	<LOQ	PASS
Methyl parathion*	0.0900	0.200	<LOQ	PASS
Pentachloronitrobenzene*	0.170	1.00	<LOQ	PASS
Trifloxystrobin*	0.110	0.200	<LOQ	PASS

* Analyte is not included in ISO 17025 scope of accreditation

Alicia Caruso-Thomas

10/16/2024

Alicia Caruso-Thomas

Laboratory Director

Phyto-Farma Labs

49 John Hicks Drive
 Warwick, NY 10990
 (845) 202-9737



Accreditation #: 121747

This is a Phyto-Farma certification that relates only to the material tested and shall not be reproduced, unless in its entirety, without written approval from Phyto-Farma. Test results are confidential, unless explicitly waived. All Pass/Fail results please reference state regulations released on 01FEB2024. Pass/Fail results do not use uncertainty, but is available upon request. The product represented has been tested by Phyto-Farma Labs using validated scientific methodologies. Note action levels are state determined thresholds for human safety and consumption. Acronym Definitions: ND - Not Detected, LOQ - Limit of Quantification, ULOQ - Upper Limit of Quantification; are terms used to describe the reliably measured smallest and largest concentrations. <LOQ* denotes the result is above detection limit, but below quantifiable limit. CFU - Colony Forming Units. Cannabis Product Sampling SOP# SOP.T.20.010.



Token Heights Cannabis Farm LLC
 Address: 920 Edie Rd., Argyle NY 12809
 Contact Name:
 Contact Phone:
 License #: OCM-AUCC-22000174
 Sample ID: 2410SMNY0196.0788



Phyto-Farma Labs
 a Smithers company

CERTIFICATE OF ANALYSIS

Permit #: OCM-CPL-00004

Certificate: 6676.1

Microbial Impurities - MDG

Pass

Sample Analysis

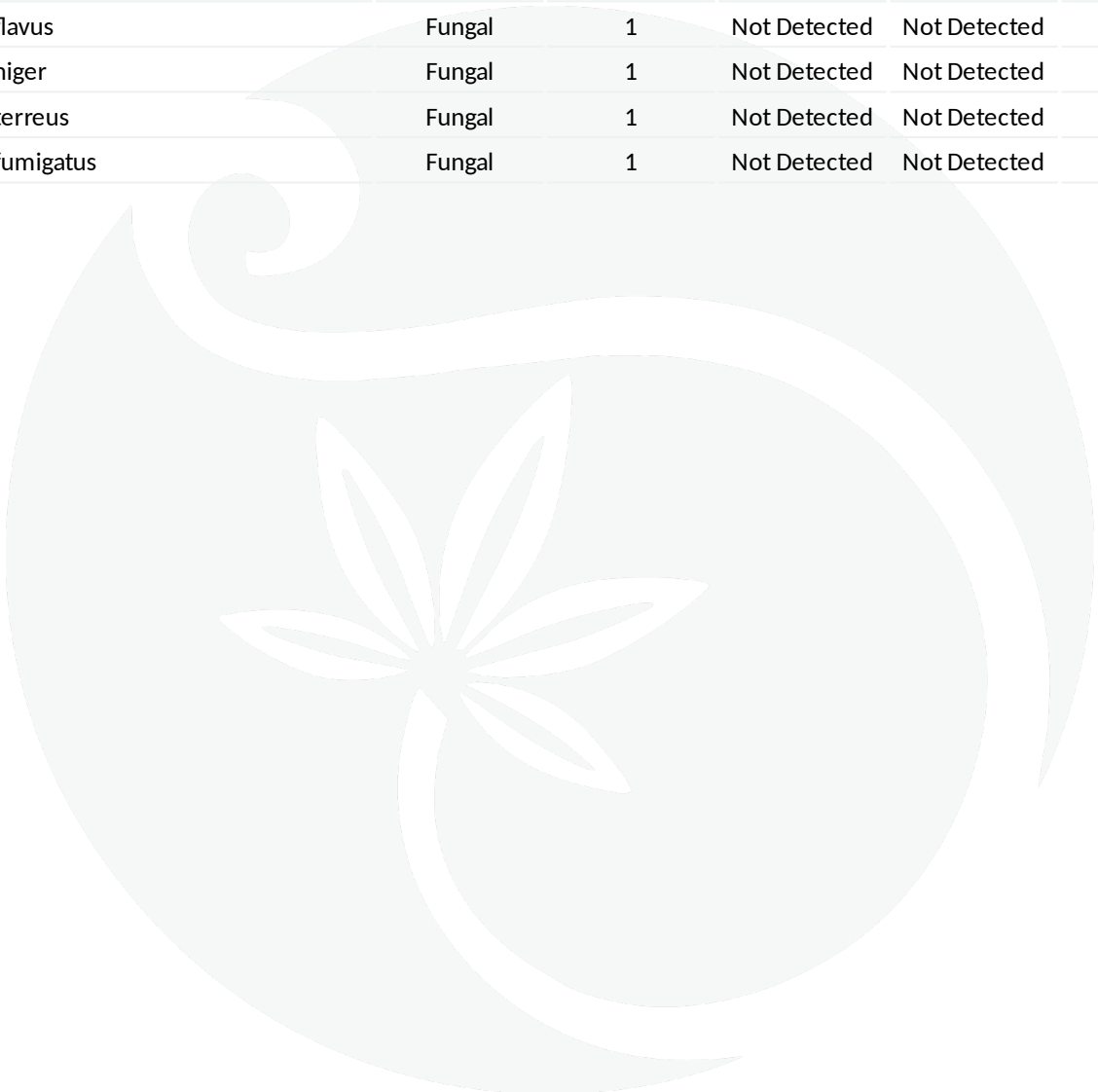
Date: 10/15/2024 09:50 AM

SOP: NYS.SOPT.40.273

Analyzed By: PCR

Analyst: Kristy Lee

Analyte	Microbial Type	LOQ (CFU/g)	Allowable Limit	Results	Pass/Fail
Shiga toxin-producing Escherichia coli	Bacterial	1	Not Detected	Not Detected	PASS
Salmonella species	Bacterial	1	Not Detected	Not Detected	PASS
Aspergillus flavus	Fungal	1	Not Detected	Not Detected	PASS
Aspergillus niger	Fungal	1	Not Detected	Not Detected	PASS
Aspergillus terreus	Fungal	1	Not Detected	Not Detected	PASS
Aspergillus fumigatus	Fungal	1	Not Detected	Not Detected	PASS



Alicia Caruso-Thomas

10/16/2024

Alicia Caruso-Thomas

Laboratory Director

Phyto-Farma Labs

49 John Hicks Drive
 Warwick, NY 10990
 (845) 202-9737



Accreditation #: 121747

This is a Phyto-Farma certification that relates only to the material tested and shall not be reproduced, unless in its entirety, without written approval from Phyto-Farma. Test results are confidential, unless explicitly waived. All Pass/Fail results please reference state regulations released on 01FEB2024. Pass/Fail results do not use uncertainty, but is available upon request. The product represented has been tested by Phyto-Farma Labs using validated scientific methodologies. Note action levels are state determined thresholds for human safety and consumption. Acronym Definitions: ND - Not Detected, LOQ - Limit of Quantification, ULOQ - Upper Limit of Quantification; are terms used to describe the reliably measured smallest and largest concentrations. <LOQ> denotes the result is above detection limit, but below quantifiable limit. CFU - Colony Forming Units. Cannabis Product Sampling SOP# SOP.T.20.010.



Token Heights Cannabis Farm LLC
 Address: 920 Edie Rd., Argyle NY 12809
 Contact Name:
 Contact Phone:
 License #: OCM-AUCC-22000174
 Sample ID: 2410SMNY0196.0788



Phyto-Farma Labs
 a Smithers company

CERTIFICATE OF ANALYSIS

Permit #: OCM-CPL-00004

Certificate: 6676.1

Microbial Impurities - TAPC

Pass

Sample Analysis

Date: 10/11/2024 05:04 PM **SOP:** NYS.SOPT.040.200
Analyzed By: Plating
Analyst: Destiny Ribadeneyra

Analyte	LOQ (CFU/g)	Action Limit (CFU/g)	Results (CFU/g)	Pass/Fail
Total Aerobic Bacteria/CDP-TC	5	N/A	10000000	PASS

Microbial Impurities - TYMC

Pass

Sample Analysis

Date: 10/15/2024 11:16 AM **SOP:** NYS.SOPT.040.200
Analyzed By: Plating
Analyst: Kristy Lee

Analyte	LOQ (CFU/g)	Action Limit (CFU/g)	Results (CFU/g)	Pass/Fail
Total Yeast and Mold	5	N/A	140000	PASS
Mold Count	5	N/A	140000	PASS
Yeast Count	5	N/A	<LOQ	PASS

Alicia Caruso-Thomas
 Laboratory Director

10/16/2024
Alicia Caruso-Thomas

Phyto-Farma Labs
 49 John Hicks Drive
 Warwick, NY 10990
 (845) 202-9737



This is a Phyto-Farma certification that relates only to the material tested and shall not be reproduced, unless in its entirety, without written approval from Phyto-Farma. Test results are confidential, unless explicitly waived. All Pass/Fail results please reference state regulations released on 01FEB2024. Pass/Fail results do not use uncertainty, but is available upon request. The product represented has been tested by Phyto-Farma Labs using validated scientific methodologies. Note action levels are state determined thresholds for human safety and consumption. Acronym Definitions: ND - Not Detected, LOQ - Limit of Quantification, ULOQ - Upper Limit of Quantification; are terms used to describe the reliably measured smallest and largest concentrations. <LOQ> denotes the result is above detection limit, but below quantifiable limit. CFU - Colony Forming Units. Cannabis Product Sampling SOP# SOP.T.20.010.



Token Heights Cannabis Farm LLC
 Address: 920 Edie Rd., Argyle NY 12809
 Contact Name:
 Contact Phone:
 License #: OCM-AUCC-22000174
 Sample ID: 2410SMNY0196.0788

Certificate: 6676.1

Foreign Matter

Pass

Sample Analysis

Date: 10/15/2024 12:04 PM SOP: NYS.SOPT.040.250
 Analyzed By: Microscopy
 Analyst: Stephanie Knapp

Analyte	LOQ	Action Limit	Results	Pass/Fail
Mammalian excreta (mg/lb)	0	1.0	0	PASS
Stems >3mm in diameter (%)	0	5.0	0	PASS
Other Foreign Material (%)	0	2.0	0	PASS

Moisture Content

Pass

Sample Analysis

Date: 10/15/2024 12:10 PM SOP: NY.SOPT.040.220
 Analyzed By: Moisture Balance
 Analyst: Destiny Ribadeneyra

Analyte	LOQ (%)	Action Limit (%)	Results (%)	Pass/Fail
Moisture Content	0.0	5.0 - 15.0	11.8	PASS

Water Activity

Pass

Sample Analysis

Date: 10/16/2024 03:45 PM SOP: NY.SOPT.040.210
 Analyzed By: Water Activity Meter
 Analyst: Moni Kaneti

Analyte	LOQ (Aw)	Action Limit (Aw)	Results (Aw)	Pass/Fail
Water Activity	0.25	0.65	0.36	PASS

Alicia Caruso-Thomas
 Laboratory Director

10/16/2024
Alicia Caruso-Thomas

Phyto-Farma Labs
 49 John Hicks Drive
 Warwick, NY 10990
 (845) 202-9737



This is a Phyto-Farma certification that relates only to the material tested and shall not be reproduced, unless in its entirety, without written approval from Phyto-Farma. Test results are confidential, unless explicitly waived. All Pass/Fail results please reference state regulations released on 01FEB2024. Pass/Fail results do not use uncertainty, but is available upon request. The product represented has been tested by Phyto-Farma Labs using validated scientific methodologies. Note action levels are state determined thresholds for human safety and consumption. Acronym Definitions: ND - Not Detected, LOQ - Limit of Quantification, ULOQ - Upper Limit of Quantification; are terms used to describe the reliably measured smallest and largest concentrations. <LOQ> denotes the result is above detection limit, but below quantifiable limit. CFU - Colony Forming Units. Cannabis Product Sampling SOP# SOP.T.20.010.



a Smithers company

Chain of Custody

Contact: Alicia Caruso-Thomas

Destination:
Phyto-Farma Labs
49 John Hicks Drive
Warwick, NY 10990

License: OCM-CPL-00004

Email: admin@phytofarmalabs.com

Phone: 845-202-9737

Contact: Alicia Caruso-Thomas

Client Information

Client Name: Token Heights Cannabis Farm LLC

Contact Name: Steven Leary

Address: 920 Edie Road
Argyle
NY
12809

Phone: 15185385569

Email: tokenheightscannabis@yahoo.com

License Number: None OCM-AUC-22000174

NY 10.9.24

Sampling Firm Information

Firm Name: Cannabis Sampling Solutions

Contact Name: Karina Pedone

Address: Warwick, NY 10990

Phone: 845-670-5950

Email: info@cannabissamplingny.com

License Number: OCM-CSF-00001

Transportation Details

Vehicle Details				
Honda	HR-V	CA66452	NJ	
Make	Model	License Plate #	State on License Plate	
Employee #1 Details				
Louis Greaux	<i>[Signature]</i>	10/9/24	439990557	NY
Name	Signature	Date	Driver's License #	Issuing State
Employee #2 Details				
Name	Signature	Date	Driver's License #	Issuing State

Sample Information Summary

Qbench ID: 1531	Confident ID: 2410SMNY0196	Sample Count: 2	Total Units: 24	Sampling/Transit Conditions:
				<input checked="" type="checkbox"/> RT <input type="checkbox"/> Fridge <input type="checkbox"/> Freezer <input type="checkbox"/> Cryo



Phyto-Farma Labs
a Smithers company

Destination:
Phyto-Farma Labs
49 John Hicks Drive
Warwick, NY 10990

License: OCM-CPL-00004

Email: admin@phytofarmalabs.com

Phone: 845-202-9737

Contact: Alicia Caruso-Thomas

Chain of Custody

Order 1531 Sample Information — Date Sampled: 10/9/24

Lab ID	Description	Batch/Lot#	Product Type	Product Subtype	Sample Type	Total Batch Size	Total Submitted Product Wt (g)	Submitted Count (units)	Start Sampling Time	End Sampling Time	
6677 2410SMNY0196.0789 <input checked="" type="checkbox"/>	skywalker	aucc174sky040124	Flower	Flower - Cured	Compliance undefined tes 10.9.24	1298	24g	13	09:30	09:37	24g
6676 2410SMNY0196.0788 <input checked="" type="checkbox"/>	og kush	aucc174ogk040124	Flower	Flower - Cured	Compliance	1298	24g	13	09:37	09:46	24g

I attest that the contents of this shipment match the records entered above and are securely packaged for transport. SLL

Employee # Details				
Name	Signature	Date	Time	Notes

Sample Information Summary				
Branch ID	Sample ID	Sample Count	Total Weight	Notes



Destination:
Phyto-Farma Labs
49 John Hicks Drive
Warwick, NY 10990

License: OCM-CPL-00004

Email: admin@phytofarmalabs.com

Phone: 845-202-9737

Contact: Alicia Caruso-Thomas

Chain of Custody

Custody Record

FOR SAMPLING FIRM USE				
Released By	Steven Leary	<i>[Signature]</i>	10/9/24	9:46
	Printed Name	Signature	Date	Time
Received By	Louis Greaux	<i>[Signature]</i>	10/9/24	09:46
	Printed Name	Signature	Date	Time
FOR LABORATORY USE				
Released By	Louis Greaux	<i>[Signature]</i>	10-9-24	12:57
	Printed Name	Signature	Date	Time
Received By [†]	Alicia Caruso-Thomas	<i>[Signature]</i>	10-9-24	12:57pm
	Printed Name	Signature	Date	Time

[†]Signer attests that the contents of this shipment match the records entered in the Sample Information table above, and agrees to take custody of those portions of this shipment. Rejected samples are specified in the Sample Information table and returned to the individual delivering this shipment.

Product Rejection Disclaimer

Description of reason/ justification for rejection:				
Rejected portion custody				
	Printed Name	Signature	Date	Time