



ROVE c/o Hudson Valley Hemp Company, LLC
 Address: 67 Pine Wood Rd., Hudson, NY 12534
 Contact Name: Suvi Freccia
 Contact Phone: 518-567-2247
 License #: OCM-AUCC-22-000064/OCM-AUCP-22-000019
 Sample ID: 5807



Phyto-Farma Labs
 a Smithers company

CERTIFICATE OF ANALYSIS

Permit #: OCM-CPL-00004

Certificate: 5807.1

Punch .5g Vape Cartridge (Bulk Oil)

Lot #: 24080512FOH Lot Size: 1500
 Sample ID: 5807 Sample Type: Concentrate
 Regulatory Category: Adult Use Amount Received: 11.5g
 Received: 08/09/2024 Sample Collected: 08/09/2024 12:06 PM
 Sampling Location: 67 Pine Wood Rd Published: 08/15/2024
 Hudson, NY 12534



COMPLIANCE FOR RETAIL

Cannabinoid Profile Pass	Terpenes Total Tested	Residual Solvents Pass	Pass Sample Status	
Pesticides Pass	Mycotoxins Pass	Water Activity Not Tested		87.2% Total THC
Trace Metals Pass	Microbial Contaminants Pass	Moisture Analysis Not Tested		0.938% Total CBD
	Filth & Foreign Not Tested			95.0 % Total Cannabinoids

Report Notes: N/A

Alicia Caruso-Thomas
 Laboratory Director

08/15/2024
Alicia Caruso-Thomas

Phyto-Farma Labs
 49 John Hicks Drive
 Warwick, NY 10990
 (845) 988-0937



This is a Phyto-Farma certification that relates only to the material tested and shall not be reproduced, unless in its entirety, without written approval from Phyto-Farma. Test results are confidential, unless explicitly waived. All Pass/Fail results please reference state regulations released on 01FEB2024. Pass/Fail results do not use uncertainty, but is available upon request. The product represented has been tested by Phyto-Farma Labs using validated scientific methodologies. Note action levels are state determined thresholds for human safety and consumption. Acronym Definitions: ND - Not Detected, LOQ - Limit of Quantification, ULOQ - Upper Limit of Quantification; are terms used to describe the reliably measured smallest and largest concentrations. <LOQ> denotes the result is above detection limit, but below quantifiable limit. CFU - Colony Forming Units. Cannabis Product Sampling SOP# SOP.T.20.010.



ROVE c/o Hudson Valley Hemp Company, LLC
 Address: 67 Pine Wood Rd., Hudson, NY 12534
 Contact Name: Suvi Freccia
 Contact Phone: 518-567-2247
 License #: OCM-AUCC-22-000064/OCM-AUCP-22-000019
 Sample ID: 5807



Phyto-Farma Labs
 a Smithers company

CERTIFICATE OF ANALYSIS

Permit #: OCM-CPL-00004

Certificate: 5807.1

Average Cannabinoid Profile

Pass

Sample Analysis

Date: 08/15/2024 05:51 PM

SOP: NY.SOPT.40.260

Analyzed By: HPLC

Sample Weight: N/A

Analyst: Stephanie Knapp

Analyte	LOQ (%)	Average % (w/w)	mg/serving	Homogeneity [†]
Total Tetrahydrocannabinol (THC)	-	87.2	2.90	
Tetrahydrocannabinolic acid (THCA)	0.500	<LOQ	<LOQ	
Δ8-THC	0.500	<LOQ	<LOQ	
Δ9-THC	0.500	85.4	2.84	
Δ10-THC-RS	0.500	1.79	0.0597	
Δ10-THC-RR	0.500	<LOQ	<LOQ	
Total Cannabidiol (CBD)	-	0.938	0.0312	
Cannabinadiolic acid (CBDA)	0.500	0.793	0.0264	
Cannabidiol (CBD)	0.500	0.243	0.00809	
Total Active Tetrahydrocannabivarin (THCV)	-	1.21	0.0403	
Tetrahydrocannabivarinic acid (THCVA)*	0.500	<LOQ	<LOQ	
Tetrahydrocannabivarin (THCV)	0.500	1.21	0.0403	
Total Active Cannabigerol (CBG)	-	3.21	0.107	
Cannabigerolic acid (CBGA)	0.500	<LOQ	<LOQ	
Cannabigerol (CBG)	0.500	3.21	0.107	
Cannabidivarin (CBDV)	0.500	0.135	0.00448	
Cannabinol (CBN)	0.500	2.35	0.0784	
Cannabichromene (CBC)	0.500	<LOQ	<LOQ	

Cannabinoid Totals	Actual % (w/w)	mg/serving	Homogeneity [†]
Total Cannabinoids	95.0	3.16	

* Analyte is not included in ISO 17025 scope of accreditation
 † Concentration of individual samples must be ±25% of the mean concentration
 Total Active CBD = CBD + (0.877 x CBDA); Total Active CBG = CBG + (0.878 x CBGA);
 Total Active THC = (Δ9THC + Δ8THC + Δ10THC-RS + Δ10THC-RR) + (0.877 x THCA);
 Total Active THCV = THCV + (0.867 x THCVA);

Serving Weight: 0.00333 g

Alicia Caruso-Thomas

08/15/2024

Alicia Caruso-Thomas

Laboratory Director

Phyto-Farma Labs

49 John Hicks Drive
 Warwick, NY 10990
 (845) 988-0937



Accreditation #: 121747

This is a Phyto-Farma certification that relates only to the material tested and shall not be reproduced, unless in its entirety, without written approval from Phyto-Farma. Test results are confidential, unless explicitly waived. All Pass/Fail results please reference state regulations released on 01FEB2024. Pass/Fail results do not use uncertainty, but is available upon request. The product represented has been tested by Phyto-Farma Labs using validated scientific methodologies. Note action levels are state determined thresholds for human safety and consumption. Acronym Definitions: ND - Not Detected, LOQ - Limit of Quantification, ULOQ - Upper Limit of Quantification; are terms used to describe the reliably measured smallest and largest concentrations. <LOQ* denotes the result is above detection limit, but below quantifiable limit. CFU - Colony Forming Units. Cannabis Product Sampling SOP# SOP.T.20.010.



ROVE c/o Hudson Valley Hemp Company, LLC
 Address: 67 Pine Wood Rd., Hudson, NY 12534
 Contact Name: Suvi Freccia
 Contact Phone: 518-567-2247
 License #: OCM-AUCC-22-000064/OCM-AUCP-22-000019
 Sample ID: 5807



Phyto-Farma Labs
 a Smithers company

CERTIFICATE OF ANALYSIS
 Permit #: OCM-CPL-00004

Certificate: 5807.1

Terpene Total

Tested (1.940%)

Sample Analysis

Date: 08/15/2024 04:36 PM

SOP: NY.SOPT.40.090

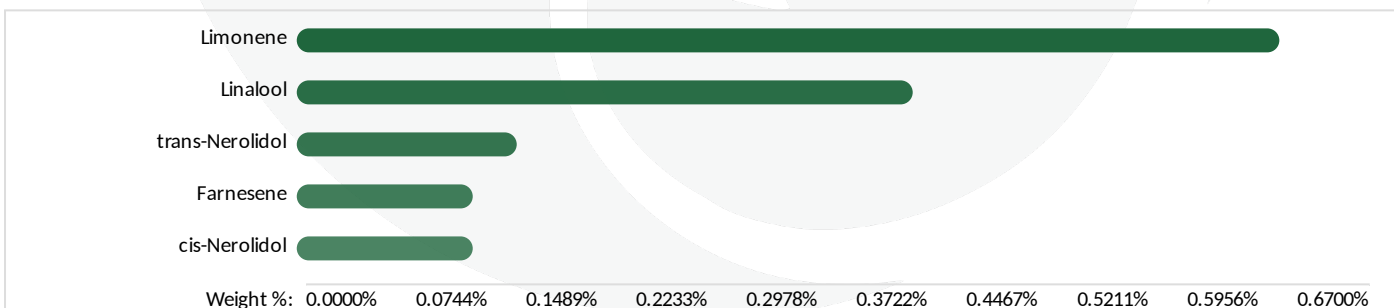
Sample Weight: 0.246 g

Analyzed By: GC-MS

Analyst: Stephanie Knapp

Analyte	LOQ (%)	Results (%)	Analyte	LOQ (%)	Results (%)
3-Carene	0.0004200	0.05000	gamma-Terpinene	0.0004400	<LOQ
alpha-Bisabolol	0.0005000	0.06000	gamma-Terpineol	0.0003000	<LOQ
alpha-Humulene	0.0005600	0.01000	Geraniol	0.0004800	0.1100
alpha-Phellandrene	0.0006600	0.1100	Geranyl acetate	0.0006200	<LOQ
alpha-Pinene	0.0004800	0.01000	Guaiol	0.0006000	0.01000
alpha-Terpinene	0.0002600	0.01000	Isoborneol	0.0003400	<LOQ
alpha-Terpineol	0.0003400	<LOQ	Isopulegol	0.0006600	<LOQ
beta-Myrcene	0.0006400	0.02000	Limonene	0.0007400	0.6700
beta-Pinene	0.0006600	<LOQ	Linalool	0.0004600	0.4200
Borneol	0.0004600	<LOQ	Menthol	0.0004600	<LOQ
Camphene	0.0004400	<LOQ	Nerol	0.0005000	<LOQ
Camphor	0.0004000	<LOQ	Pulegone (+)	0.0005600	<LOQ
Caryophyllene oxide	0.0005800	0.04000	Sabinene	0.0003400	<LOQ
Cedrene	0.0004400	<LOQ	Sabinene Hydrate	0.0004200	<LOQ
Cedrol	0.0005600	<LOQ	Terpinolene	0.0005000	<LOQ
cis-Nerolidol	0.0006800	0.1200	trans-b-Ocimene	0.0004200	<LOQ
cis-Ocimene	0.0005200	<LOQ	trans-Caryophyllene	0.0006600	0.02000
Eucalyptol	0.0007200	0.01000	trans-Nerolidol	0.0007200	0.1500
Farnesene	0.0008400	0.1200	Valencene	0.0005600	<LOQ
Fenchone	0.0005000	<LOQ			

Terpene Totals	%	Pass/Fail
Total Terpenes	1.940	N/A



Alicia Caruso-Thomas
 Laboratory Director

08/15/2024
Alicia Caruso-Thomas

Phyto-Farma Labs
 49 John Hicks Drive
 Warwick, NY 10990
 (845) 988-0937



This is a Phyto-Farma certification that relates only to the material tested and shall not be reproduced, unless in its entirety, without written approval from Phyto-Farma. Test results are confidential, unless explicitly waived. All Pass/Fail results please reference state regulations released on 01FEB2024. Pass/Fail results do not use uncertainty, but is available upon request. The product represented has been tested by Phyto-Farma Labs using validated scientific methodologies. Note action levels are state determined thresholds for human safety and consumption. Acronym Definitions: ND - Not Detected, LOQ - Limit of Quantification, ULOQ - Upper Limit of Quantification; are terms used to describe the reliably measured smallest and largest concentrations. <LOQ* denotes the result is above detection limit, but below quantifiable limit. CFU - Colony Forming Units. Cannabis Product Sampling SOP# SOP.T.20.010.



ROVE c/o Hudson Valley Hemp Company, LLC
 Address: 67 Pine Wood Rd., Hudson, NY 12534
 Contact Name: Suvi Freccia
 Contact Phone: 518-567-2247
 License #: OCM-AUCC-22-000064/OCM-AUCP-22-000019
 Sample ID: 5807



Phyto-Farma Labs
 a Smithers company

CERTIFICATE OF ANALYSIS

Permit #: OCM-CPL-00004

Certificate: 5807.1

Trace Metals

Pass

Sample Analysis

Date: 08/15/2024 04:49 PM

SOP: NY.SOPT.40.050

Analyzed By: ICP-MS

Sample Weight: 0.1245 g

Analyst: Moni Kaneti

Analyte	LOQ (µg/g)	Action Limit (µg/g)	Results (µg/g)	Pass/Fail
Antimony (Sb)*	0.130	2.00	<LOQ	PASS
Arsenic (As)*	0.0700	0.200	<LOQ	PASS
Cadmium (Cd)*	0.0600	0.300	<LOQ	PASS
Chromium (Cr)*	0.360	110	<LOQ	PASS
Copper (Cu)*	0.390	30.0	<LOQ	PASS
Lead (Pb)*	0.0800	0.500	<LOQ	PASS
Mercury (Hg)*	0.0100	0.100	<LOQ	PASS
Nickel (Ni)*	0.110	2.00	<LOQ	PASS

* Analyte is not included in ISO 17025 scope of accreditation

Mycotoxin Analysis

Pass

Sample Analysis

Date: 08/15/2024 04:46 PM

SOP: NY.SOPT.40.180

Analyzed By: LC-MS/MS

Sample Weight: 0.1 g

Analyst: Destiny Ribadeneyra

Analyte	LOQ (µg/g)	Action Limit (µg/g)	Results (µg/g)	Pass/Fail
Sum of Aflatoxins	-	0.020	0	PASS
Aflatoxin B1	0.0010	0.020	<LOQ	PASS
Aflatoxin B2	0.0020	0.020	<LOQ	PASS
Aflatoxin G1	0.0010	0.020	<LOQ	PASS
Aflatoxin G2	0.0020	0.020	<LOQ	PASS
Ochratoxin A	0.0020	0.020	<LOQ	PASS

Alicia Caruso-Thomas

08/15/2024

Alicia Caruso-Thomas

Laboratory Director

Phyto-Farma Labs

49 John Hicks Drive
 Warwick, NY 10990
 (845) 988-0937



Accreditation #: 121747

This is a Phyto-Farma certification that relates only to the material tested and shall not be reproduced, unless in its entirety, without written approval from Phyto-Farma. Test results are confidential, unless explicitly waived. All Pass/Fail results please reference state regulations released on 01FEB2024. Pass/Fail results do not use uncertainty, but is available upon request. The product represented has been tested by Phyto-Farma Labs using validated scientific methodologies. Note action levels are state determined thresholds for human safety and consumption. Acronym Definitions: ND - Not Detected, LOQ - Limit of Quantification, ULOQ - Upper Limit of Quantification; are terms used to describe the reliably measured smallest and largest concentrations. <LOQ* denotes the result is above detection limit, but below quantifiable limit. CFU - Colony Forming Units. Cannabis Product Sampling SOP# SOP.T.20.010.



ROVE c/o Hudson Valley Hemp Company, LLC
 Address: 67 Pine Wood Rd., Hudson, NY 12534
 Contact Name: Suvi Freccia
 Contact Phone: 518-567-2247
 License #: OCM-AUCC-22-000064/OCM-AUCP-22-000019
 Sample ID: 5807

CERTIFICATE OF ANALYSIS
 Permit #: OCM-CPL-00004

Certificate: 5807.1

Pesticides LC

Pass

Sample Analysis

Date: 08/14/2024 10:02 AM

SOP: NY.SOPT.040.270

Analyzed By: LC-MS/MS

Sample Weight: 1 g

Analyst: Destiny Ribadeneyra

Analyte	LOQ (ppm)	Action Limit (ppm)	Results (ppm)	Pass/Fail	Analyte	LOQ (ppm)	Action Limit (ppm)	Results (ppm)	Pass/Fail
Abamectin*	0.0180	0.500	<LOQ	PASS	Imidacloprid*	0.00800	0.400	<LOQ	PASS
Acephate*	0.00700	0.400	<LOQ	PASS	Indole-3-butyric acid*	0.00700	1.00	<LOQ	PASS
Acequinocyl*	0.0160	2.00	<LOQ	PASS	Kresoxim methyl*	0.0120	0.400	<LOQ	PASS
Acetamiprid*	0.00500	0.200	<LOQ	PASS	Malathion*	0.0110	0.200	<LOQ	PASS
Aldicarb*	0.00500	0.400	<LOQ	PASS	Metalaxyl*	0.0120	0.200	<LOQ	PASS
Azadirachtin*	0.0220	1.00	<LOQ	PASS	Methiocarb*	0.00400	0.200	<LOQ	PASS
Azoxystrobin*	0.00600	0.200	<LOQ	PASS	Methomyl*	0.0120	0.400	<LOQ	PASS
Bifenazate*	0.00600	0.200	<LOQ	PASS	Mevinphos*	0.0190	1.00	<LOQ	PASS
Bifenthrin*	0.00300	0.200	<LOQ	PASS	MGK-264*	0.0110	0.200	<LOQ	PASS
Boscalid*	0.0110	0.400	<LOQ	PASS	Myclobutanil*	0.0130	0.200	<LOQ	PASS
Carbaryl*	0.00600	0.200	<LOQ	PASS	Naled*	0.00500	0.500	<LOQ	PASS
Carbofuran*	0.00500	0.200	<LOQ	PASS	Oxamyl*	0.00800	1.00	<LOQ	PASS
Chlorantraniliprole*	0.00600	0.200	<LOQ	PASS	Paclobutrazol*	0.0150	0.400	<LOQ	PASS
Chloromequat chloride*	0.0190	1.00	<LOQ	PASS	Permethrins, Total*	0.00900	0.200	<LOQ	PASS
Chlorpyrifos*	0.00900	0.200	<LOQ	PASS	Phosmet*	0.00700	0.200	<LOQ	PASS
Clofentezine*	0.0100	0.200	<LOQ	PASS	Piperonyl Butoxide*	0.00600	2.00	<LOQ	PASS
Daminozide*	0.00400	1.00	<LOQ	PASS	Prallethrin*	0.00800	0.200	<LOQ	PASS
Diazinon*	0.00700	0.200	<LOQ	PASS	Propiconazole*	0.00600	0.400	<LOQ	PASS
Dichlorvos*	0.0120	1.00	<LOQ	PASS	Propoxur*	0.00800	0.200	<LOQ	PASS
Dimethoate*	0.00600	0.200	<LOQ	PASS	Pyrethrins*	0.0140	1.00	<LOQ	PASS
Dimethomorph*	0.00500	1.00	<LOQ	PASS	Pyridaben*	0.00600	0.200	<LOQ	PASS
Ethoprophos*	0.0130	0.200	<LOQ	PASS	Spinetoram, Total*	0.00500	1.00	<LOQ	PASS
Etofenprox*	0.00300	0.400	<LOQ	PASS	Spinosad, Total*	0.00600	0.200	<LOQ	PASS
Etoxazole*	0.00500	0.200	<LOQ	PASS	Spiromesifen*	0.0130	0.200	<LOQ	PASS
Fenhexamid*	0.0150	1.00	<LOQ	PASS	Spirotetramat*	0.00600	0.200	<LOQ	PASS
Fenoxycarb*	0.0110	0.200	<LOQ	PASS	Spiroxamine*	0.00400	0.200	<LOQ	PASS
Fenpyroximate*	0.00200	0.400	<LOQ	PASS	Tebuconazole*	0.0120	0.400	<LOQ	PASS
Flonicamid*	0.00700	1.00	<LOQ	PASS	Thiacloprid*	0.00800	0.200	<LOQ	PASS
Fludioxonil*	0.0170	0.400	<LOQ	PASS	Thiamethoxam*	0.00800	0.200	<LOQ	PASS
Hexythiazox*	0.00500	1.00	<LOQ	PASS					

* Analyte is not included in ISO 17025 scope of accreditation

Alicia Caruso-Thomas
 Laboratory Director

08/15/2024
Alicia Caruso-Thomas

Phyto-Farma Labs
 49 John Hicks Drive
 Warwick, NY 10990
 (845) 988-0937



This is a Phyto-Farma certification that relates only to the material tested and shall not be reproduced, unless in its entirety, without written approval from Phyto-Farma. Test results are confidential, unless explicitly waived. All Pass/Fail results please reference state regulations released on 01FEB2024. Pass/Fail results do not use uncertainty, but is available upon request. The product represented has been tested by Phyto-Farma Labs using validated scientific methodologies. Note action levels are state determined thresholds for human safety and consumption. Acronym Definitions: ND - Not Detected, LOQ - Limit of Quantification, ULOQ - Upper Limit of Quantification, are terms used to describe the reliably measured smallest and largest concentrations. <LOQ* denotes the result is above detection limit, but below quantifiable limit. CFU - Colony Forming Units. Cannabis Product Sampling SOP# SOP1.20.010.



ROVE c/o Hudson Valley Hemp Company, LLC
 Address: 67 Pine Wood Rd., Hudson, NY 12534
 Contact Name: Suvi Freccia
 Contact Phone: 518-567-2247
 License #: OCM-AUCC-22-000064/OCM-AUCP-22-000019
 Sample ID: 5807



Phyto-Farma Labs
 a Smithers company

CERTIFICATE OF ANALYSIS

Permit #: OCM-CPL-00004

Certificate: 5807.1

Pesticides GC

Pass

Sample Analysis

Date: 08/15/2024 04:55 PM

SOP: NYS.SOPT.040.271

Analyzed By: GC-MS/MS

Sample Weight: N/A

Analyst: Destiny Ribadeneyra

Analyte	LOQ (ppm)	Action Limit (ppm)	Results (ppm)	Pass/Fail
Captan*	0.300	1.00	<LOQ	PASS
Chlordane*	0.0700	1.00	<LOQ	PASS
Chlorfenapyr*	0.100	1.00	<LOQ	PASS
Coumaphos*	0.190	1.00	<LOQ	PASS
Cyfluthrin*	0.110	1.00	<LOQ	PASS
Cypermethrin*	0.240	1.00	<LOQ	PASS
Fipronil*	0.170	0.400	<LOQ	PASS
Imazalil*	0.170	0.200	<LOQ	PASS
Methyl parathion*	0.0900	0.200	<LOQ	PASS
Pentachloronitrobenzene*	0.170	1.00	<LOQ	PASS
Trifloxystrobin*	0.110	0.200	<LOQ	PASS

* Analyte is not included in ISO 17025 scope of accreditation

Alicia Caruso-Thomas

08/15/2024

Alicia Caruso-Thomas

Laboratory Director

Phyto-Farma Labs

49 John Hicks Drive
 Warwick, NY 10990
 (845) 988-0937



Accreditation #: 121747

This is a Phyto-Farma certification that relates only to the material tested and shall not be reproduced, unless in its entirety, without written approval from Phyto-Farma. Test results are confidential, unless explicitly waived. All Pass/Fail results please reference state regulations released on 01FEB2024. Pass/Fail results do not use uncertainty, but is available upon request. The product represented has been tested by Phyto-Farma Labs using validated scientific methodologies. Note action levels are state determined thresholds for human safety and consumption. Acronym Definitions: ND - Not Detected, LOQ - Limit of Quantification, ULOQ - Upper Limit of Quantification; are terms used to describe the reliably measured smallest and largest concentrations. <LOQ* denotes the result is above detection limit, but below quantifiable limit. CFU - Colony Forming Units. Cannabis Product Sampling SOP# SOP.T.20.010.



ROVE c/o Hudson Valley Hemp Company, LLC
 Address: 67 Pine Wood Rd., Hudson, NY 12534
 Contact Name: Suvi Freccia
 Contact Phone: 518-567-2247
 License #: OCM-AUCC-22-000064/OCM-AUCP-22-000019
 Sample ID: 5807



Phyto-Farma Labs
 a Smithers company

CERTIFICATE OF ANALYSIS

Permit #: OCM-CPL-00004

Certificate: 5807.1

Residual Solvents

Pass

Sample Analysis

Date: 08/15/2024 05:12 PM

SOP: NYS.SOPT.040.272

Analyzed By: GC-MS

Sample Weight: 0.1014 g

Analyst: Destiny Ribadeneyra

Analyte	LOQ (ppm)	Action Limit (ppm)	Results (ppm)	Pass/Fail
1,2-Dichloroethane (Ethylene dichloride, Ethylene chloride)	0.100	5.00	<LOQ	PASS
2-Propanol (Isopropanol, Isopropyl alcohol)	125	5000	<LOQ	PASS
Acetone (2-Propanone)	125	5000	<LOQ	PASS
Acetonitrile	23.6	410	<LOQ	PASS
Benzene	0.100	2.00	<LOQ	PASS
Butanes, Total	62.5	5000	<LOQ	PASS
Chloroform	1.50	60.0	<LOQ	PASS
Dichloromethane (Methylene chloride)	15.0	600	<LOQ	PASS
Dimethyl sulfoxide (DMSO)	125	5000	<LOQ	PASS
Ethanol (Ethyl alcohol)	125	5000	<LOQ	PASS
Ethyl acetate (Acetic acid ethyl ester)	125	5000	<LOQ	PASS
Ethyl ether (Diethyl ether, 1,1'-Oxybisethane)	125	5000	<LOQ	PASS
Heptane (n-Heptane)	125	5000	<LOQ	PASS
Hexanes, Total	14.5	290	<LOQ	PASS
Methanol (Methyl alcohol)	75.1	3000	<LOQ	PASS
Pentanes, Total	195	5000	<LOQ	PASS
Propane	63.0	5000	<LOQ	PASS
Toluene (Methylbenzene)	22.3	890	<LOQ	PASS
Trichloroethane (1,1,1-)	37.6	1500	<LOQ	PASS
Tetrafluoroethane (1,1,1,2-) (HFC134a)*	10.0	1000	<LOQ	PASS
Xylenes, Total (ortho-, meta-, para-)	109	2170	<LOQ	PASS

* Analyte is not included in ISO 17025 scope of accreditation

Alicia Caruso-Thomas

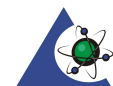
08/15/2024

Alicia Caruso-Thomas

Laboratory Director

Phyto-Farma Labs

49 John Hicks Drive
 Warwick, NY 10990
 (845) 988-0937



Accreditation #: 121747

This is a Phyto-Farma certification that relates only to the material tested and shall not be reproduced, unless in its entirety, without written approval from Phyto-Farma. Test results are confidential, unless explicitly waived. All Pass/Fail results please reference state regulations released on 01FEB2024. Pass/Fail results do not use uncertainty, but is available upon request. The product represented has been tested by Phyto-Farma Labs using validated scientific methodologies. Note action levels are state determined thresholds for human safety and consumption. Acronym Definitions: ND - Not Detected, LOQ - Limit of Quantification, ULOQ - Upper Limit of Quantification; are terms used to describe the reliably measured smallest and largest concentrations. <LOQ* denotes the result is above detection limit, but below quantifiable limit. CFU - Colony Forming Units. Cannabis Product Sampling SOP# SOP.T.20.010.



ROVE c/o Hudson Valley Hemp Company, LLC
 Address: 67 Pine Wood Rd., Hudson, NY 12534
 Contact Name: Suvi Freccia
 Contact Phone: 518-567-2247
 License #: OCM-AUCC-22-000064/OCM-AUCP-22-000019
 Sample ID: 5807



Phyto-Farma Labs
 a Smithers company

CERTIFICATE OF ANALYSIS

Permit #: OCM-CPL-00004

Certificate: 5807.1

Microbial Impurities - MDG

Pass

Sample Analysis

Date: 08/15/2024 10:59 AM

SOP: NYS.SOPT.40.273

Analyzed By: PCR

Analyst: Kristy Lee

Analyte	Microbial Type	LOQ (CFU/g)	Allowable Limit	Results	Pass/Fail
Shiga toxin-producing Escherichia coli	Bacterial	1	Not Detected	Not Detected	PASS
Salmonella species	Bacterial	1	Not Detected	Not Detected	PASS
Aspergillus flavus	Fungal	1	Not Detected	Not Detected	PASS
Aspergillus niger	Fungal	1	Not Detected	Not Detected	PASS
Aspergillus terreus	Fungal	1	Not Detected	Not Detected	PASS
Aspergillus fumigatus	Fungal	1	Not Detected	Not Detected	PASS

Alicia Caruso-Thomas

08/15/2024

Alicia Caruso-Thomas

Laboratory Director

Phyto-Farma Labs

49 John Hicks Drive
 Warwick, NY 10990
 (845) 988-0937



PJLA
 Testing
 Accreditation #: 121747

This is a Phyto-Farma certification that relates only to the material tested and shall not be reproduced, unless in its entirety, without written approval from Phyto-Farma. Test results are confidential, unless explicitly waived. All Pass/Fail results please reference state regulations released on 01FEB2024. Pass/Fail results do not use uncertainty, but is available upon request. The product represented has been tested by Phyto-Farma Labs using validated scientific methodologies. Note action levels are state determined thresholds for human safety and consumption. Acronym Definitions: ND - Not Detected, LOQ - Limit of Quantification, ULOQ - Upper Limit of Quantification; are terms used to describe the reliably measured smallest and largest concentrations. <LOQ> denotes the result is above detection limit, but below quantifiable limit. CFU - Colony Forming Units. Cannabis Product Sampling SOP# SOP.T.20.010.



ROVE c/o Hudson Valley Hemp Company, LLC
 Address: 67 Pine Wood Rd., Hudson, NY 12534
 Contact Name: Suvi Freccia
 Contact Phone: 518-567-2247
 License #: OCM-AUCC-22-000064/OCM-AUCP-22-000019
 Sample ID: 5807



Phyto-Farma Labs
 a Smithers company

CERTIFICATE OF ANALYSIS

Permit #: OCM-CPL-00004

Certificate: 5807.1

Microbial Impurities - TAPC

Pass

Sample Analysis

Date: 08/14/2024 02:11 PM

SOP: NYS.SOPT.040.200

Analyzed By: Plating

Analyst: Kristy Lee

Analyte	LOQ (CFU/g)	Action Limit (CFU/g)	Results (CFU/g)	Pass/Fail
Total Aerobic Bacteria/CDP-TC	5	10000	<LOQ	PASS

Microbial Impurities - TYMC

Pass

Sample Analysis

Date: 08/15/2024 05:15 PM

SOP: NYS.SOPT.040.200

Analyzed By: Plating

Analyst: Kristy Lee

Analyte	LOQ (CFU/g)	Action Limit (CFU/g)	Results (CFU/g)	Pass/Fail
Total Yeast and Mold	5	1000	<LOQ	PASS
Mold Count	5	1000	<LOQ	PASS
Yeast Count	5	1000	<LOQ	PASS

Alicia Caruso-Thomas

08/15/2024

Alicia Caruso-Thomas

Laboratory Director

Phyto-Farma Labs

49 John Hicks Drive
 Warwick, NY 10990
 (845) 988-0937



PJLA
 Testing
 Accreditation #: 121747

This is a Phyto-Farma certification that relates only to the material tested and shall not be reproduced, unless in its entirety, without written approval from Phyto-Farma. Test results are confidential, unless explicitly waived. All Pass/Fail results please reference state regulations released on 01FEB2024. Pass/Fail results do not use uncertainty, but is available upon request. The product represented has been tested by Phyto-Farma Labs using validated scientific methodologies. Note action levels are state determined thresholds for human safety and consumption. Acronym Definitions: ND - Not Detected, LOQ - Limit of Quantification, ULOQ - Upper Limit of Quantification; are terms used to describe the reliably measured smallest and largest concentrations. <LOQ* denotes the result is above detection limit, but below quantifiable limit. CFU - Colony Forming Units. Cannabis Product Sampling SOP# SOP.T.20.010.



ROVE c/o Hudson Valley Hemp Company, LLC
 Address: 67 Pine Wood Rd., Hudson, NY 12534
 Contact Name: Suvi Freccia
 Contact Phone: 518-567-2247
 License #: OCM-AUCC-22-000064/OCM-AUCP-22-000019
 Sample ID: 5808



Phyto-Farma Labs
 a Smithers company

CERTIFICATE OF ANALYSIS
 Permit #: OCM-CPL-00004

Certificate: 5808.1

Punch .35g AIO

Lot #: 24080512FOAIO
 Sample ID: 5808
 Regulatory Category: Adult Use
 Received: 08/09/2024
 Sampling Location: 67 Pine Wood Rd
 Hudson, NY 12534

Lot Size: 2500
 Sample Type: Concentrate
 Amount Received: 1.05g
 Sample Collected: 08/09/2024 12:06 PM
 Published: 08/15/2024



COMPLIANCE FOR RETAIL

Cannabinoid Profile Not Tested	Terpenes Total Not Tested	Residual Solvents Not Tested	Pass Sample Status
Pesticides Not Tested	Mycotoxins Not Tested	Water Activity Not Tested	NT Total THC
Trace Metals Pass	Microbial Contaminants Not Tested	Moisture Analysis Not Tested	NT Total CBD
	Filth & Foreign Not Tested		NT Total Cannabinoids

Report Notes: N/A

Alicia Caruso-Thomas
 Laboratory Director

08/15/2024
Alicia Caruso-Thomas

Phyto-Farma Labs
 49 John Hicks Drive
 Warwick, NY 10990
 (845) 988-0937



This is a Phyto-Farma certification that relates only to the material tested and shall not be reproduced, unless in its entirety, without written approval from Phyto-Farma. Test results are confidential, unless explicitly waived. All Pass/Fail results please reference state regulations released on 01FEB2024. Pass/Fail results do not use uncertainty, but is available upon request. The product represented has been tested by Phyto-Farma Labs using validated scientific methodologies. Note action levels are state determined thresholds for human safety and consumption. Acronym Definitions: ND - Not Detected, LOQ - Limit of Quantification, ULOQ - Upper Limit of Quantification; are terms used to describe the reliably measured smallest and largest concentrations. <LOQ> denotes the result is above detection limit, but below quantifiable limit. CFU - Colony Forming Units. Cannabis Product Sampling SOP# SOP.T.20.010.



ROVE c/o Hudson Valley Hemp Company, LLC
 Address: 67 Pine Wood Rd., Hudson, NY 12534
 Contact Name: Suvi Freccia
 Contact Phone: 518-567-2247
 License #: OCM-AUCC-22-000064/OCM-AUCP-22-000019
 Sample ID: 5808

Certificate: 5808.1

Trace Metals

Pass

Sample Analysis

Date: 08/15/2024 04:49 PM **SOP:** NY.SOPT.40.050
Analyzed By: ICP-MS **Sample Weight:** 0.1354 g
Analyst: Moni Kaneti

Analyte	LOQ (µg/g)	Action Limit (µg/g)	Results (µg/g)	Pass/Fail
Antimony (Sb)*	0.130	2.00	<LOQ	PASS
Arsenic (As)*	0.0700	0.200	<LOQ	PASS
Cadmium (Cd)*	0.0600	0.300	<LOQ	PASS
Chromium (Cr)*	0.360	110	<LOQ	PASS
Copper (Cu)*	0.390	30.0	<LOQ	PASS
Lead (Pb)*	0.0800	0.500	<LOQ	PASS
Mercury (Hg)*	0.0100	0.100	<LOQ	PASS
Nickel (Ni)*	0.110	2.00	<LOQ	PASS

* Analyte is not included in ISO 17025 scope of accreditation

Alicia Caruso-Thomas
 Laboratory Director

08/15/2024
Alicia Caruso-Thomas

Phyto-Farma Labs
 49 John Hicks Drive
 Warwick, NY 10990
 (845) 988-0937



This is a Phyto-Farma certification that relates only to the material tested and shall not be reproduced, unless in its entirety, without written approval from Phyto-Farma. Test results are confidential, unless explicitly waived. All Pass/Fail results please reference state regulations released on 01FEB2024. Pass/Fail results do not use uncertainty, but is available upon request. The product represented has been tested by Phyto-Farma Labs using validated scientific methodologies. Note action levels are state determined thresholds for human safety and consumption. Acronym Definitions: ND - Not Detected, LOQ - Limit of Quantification, ULOQ - Upper Limit of Quantification; are terms used to describe the reliably measured smallest and largest concentrations. <LOQ* denotes the result is above detection limit, but below quantifiable limit. CFU - Colony Forming Units. Cannabis Product Sampling SOP# SOP.T.20.010.