



Hudson Cannabis c/o Hudson Valley Hemp Company, LLC
 Address: 67 Pine Wood Rd., Hudson, NY 12534
 Contact Name:
 Contact Phone:
 License #: OCM-PROC-24-000208
 Sample ID: 2412SMNY0397.1723



Phyto-Farma Labs
 a Smithers company

CERTIFICATE OF ANALYSIS

Permit #: OCM-CPL-00004

Certificate: 7616.2

Rainbow Kush Rosin Vape 1G

Lot #: HC-RV-L0424 Lot Size: 2000
 Sample ID: 2412SMNY0397.1723 Sample Type: Concentrate
 Regulatory Category: Adult Use Amount Received:
 Received: 12/10/2024 Sample Collected: 12/03/2024 11:33 AM
 Sampling Location: 67 PINE WOOD RD 1 Published: 12/11/2024
 Hudson, NY



COMPLIANCE FOR RETAIL

| | | | | |
|------------------------------------|---------------------------------------|--|-------------------------------------|----------------------------|
| Cannabinoid Profile Pass | Terpenes Total Pass | Residual Solvents Pass | Pass Sample Status | |
| Pesticides Pass | Mycotoxins Pass | Water Activity Not Tested | | 80.3% Total THC |
| Trace Metals Pass | Microbial Contaminants Pass | Moisture Analysis Not Tested | | 0.457% Total CBD |
| | Filth & Foreign Not Tested | | 88.4 % Total Cannabinoids | |

Report Notes: Amended: Sample name corrected as per client's request.

Lindsey Vento 12/11/2024
 Micro Director

Lindsey Vento

Phyto-Farma Labs
 49 John Hicks Drive
 Warwick, NY 10990
 (845) 202-9737



This is a Phyto-Farma certification that relates only to the material tested and shall not be reproduced, unless in its entirety, without written approval from Phyto-Farma. Test results are confidential, unless explicitly waived. All Pass/Fail results please reference state regulations released on 01FEB2024. Pass/Fail results do not use uncertainty, but is available upon request. The product represented has been tested by Phyto-Farma Labs using validated scientific methodologies. Note action levels are state determined thresholds for human safety and consumption. Acronym Definitions: ND - Not Detected, LOQ - Limit of Quantification, ULOQ - Upper Limit of Quantification; are terms used to describe the reliably measured smallest and largest concentrations. <LOQ> denotes the result is above detection limit, but below quantifiable limit. CFU - Colony Forming Units. Cannabis Product Sampling SOP# SOP.T.20.010.



Hudson Cannabis c/o Hudson Valley Hemp Company, LLC
 Address: 67 Pine Wood Rd., Hudson, NY 12534
 Contact Name:
 Contact Phone:
 License #: OCM-PROC-24-000208
 Sample ID: 2412SMNY0397.1723



Phyto-Farma Labs
 a Smithers company

CERTIFICATE OF ANALYSIS

Permit #: OCM-CPL-00004

Certificate: 7616.2

Average Cannabinoid Profile

Pass

Sample Analysis

Date: 12/09/2024 02:10 PM

SOP: NY.SOPT.40.260

Analyzed By: HPLC

Sample Weight: N/A

Analyst: Stephanie Knapp

| Analyte | LOQ (%) | Average % (w/w) | mg/serving | Homogeneity [†] |
|--|---------|-----------------|------------|--------------------------|
| Total Tetrahydrocannabinol (THC) | - | 80.3 | 4.02 | |
| Tetrahydrocannabinolic acid (THCA) | 0.500 | 8.15 | 0.408 | |
| Δ8-THC | 0.500 | <LOQ | <LOQ | |
| Δ9-THC | 0.500 | 73.0 | 3.65 | |
| Δ10-THC-RS | 0.500 | <LOQ | <LOQ | |
| Δ10-THC-RR | 0.500 | 0.160 | 0.00801 | |
| Total Cannabidiol (CBD) | - | 0.457 | 0.0229 | |
| Cannabinadiolic acid (CBDA) | 0.500 | 0.237 | 0.0118 | |
| Cannabidiol (CBD) | 0.500 | 0.249 | 0.0125 | |
| Total Active Tetrahydrocannabivarin (THCV) | - | 1.26 | 0.0629 | |
| Tetrahydrocannabivarinic acid (THCVA)* | 0.500 | 0.281 | 0.0141 | |
| Tetrahydrocannabivarin (THCV) | 0.500 | 1.01 | 0.0507 | |
| Total Active Cannabigerol (CBG) | - | 4.41 | 0.220 | |
| Cannabigerolic acid (CBGA) | 0.500 | 1.81 | 0.0906 | |
| Cannabigerol (CBG) | 0.500 | 2.82 | 0.141 | |
| Cannabidivarin (CBDV) | 0.500 | 0.0958 | 0.00479 | |
| Cannabinol (CBN) | 0.500 | 0.430 | 0.0215 | |
| Cannabichromene (CBC) | 0.500 | 1.38 | 0.0690 | |

| Cannabinoid Totals | Actual % (w/w) | mg/serving | Homogeneity [†] |
|--------------------|----------------|------------|--------------------------|
| Total Cannabinoids | 88.4 | 4.42 | |

* Analyte is not included in ISO 17025 scope of accreditation

† Concentration of individual samples must be ±25% of the mean concentration

Total Active CBD = CBD + (0.877 x CBDA); Total Active CBG = CBG + (0.878 x CBGA);

Total Active THC = (Δ9THC + Δ8THC + Δ10THC-RS + Δ10THC-RR) + (0.877 x THCA);

Total Active THCV = THCV + (0.867 x THCVA);

Serving Weight: 0.005 g

Lindsey Vento

12/11/2024

Lindsey Vento

Micro Director

Phyto-Farma Labs

49 John Hicks Drive
 Warwick, NY 10990
 (845) 202-9737



Accreditation #: 121747

This is a Phyto-Farma certification that relates only to the material tested and shall not be reproduced, unless in its entirety, without written approval from Phyto-Farma. Test results are confidential, unless explicitly waived. All Pass/Fail results please reference state regulations released on 01FEB2024. Pass/Fail results do not use uncertainty, but is available upon request. The product represented has been tested by Phyto-Farma Labs using validated scientific methodologies. Note action levels are state determined thresholds for human safety and consumption. Acronym Definitions: ND - Not Detected, LOQ - Limit of Quantification, ULOQ - Upper Limit of Quantification; are terms used to describe the reliably measured smallest and largest concentrations. <LOQ* denotes the result is above detection limit, but below quantifiable limit. CFU - Colony Forming Units. Cannabis Product Sampling SOP# SOP.T.20.010.



Hudson Cannabis c/o Hudson Valley Hemp Company, LLC
 Address: 67 Pine Wood Rd., Hudson, NY 12534
 Contact Name:
 Contact Phone:
 License #: OCM-PROC-24-000208
 Sample ID: 2412SMNY0397.1723

CERTIFICATE OF ANALYSIS
 Permit #: OCM-CPL-00004

Certificate: 7616.2

Terpene Total

Pass (2.333%)

Sample Analysis

Date: 12/09/2024 02:31 PM

SOP: NY.SOPT.40.090

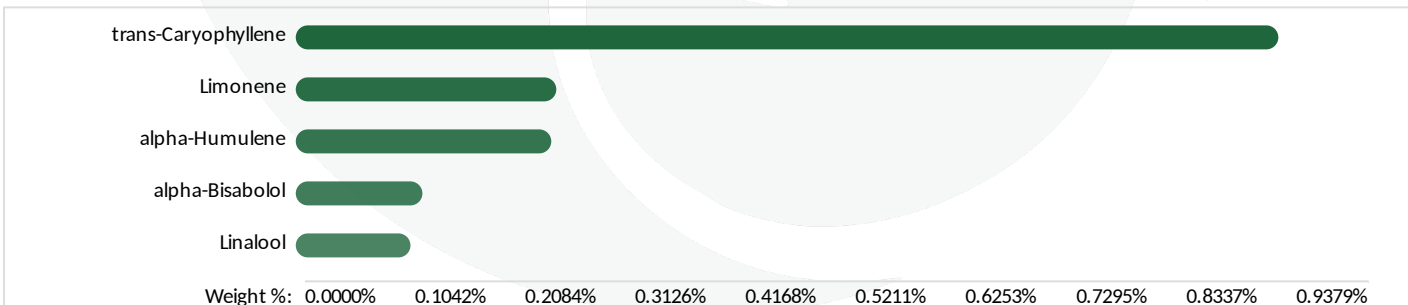
Sample Weight: 0.2291 g

Analyzed By: GC-MS

Analyst: Destiny Ribadeneyra

| Analyte | LOQ (%) | Results (%) | Analyte | LOQ (%) | Results (%) |
|---------------------|-----------|-------------|---------------------|-----------|-------------|
| 3-Carene | 0.0004200 | <LOQ | gamma-Terpinene | 0.0004400 | 0.002900 |
| alpha-Bisabolol | 0.0005000 | 0.1209 | gamma-Terpineol | 0.0003000 | <LOQ |
| alpha-Humulene | 0.0005600 | 0.2439 | Geraniol | 0.0004800 | <LOQ |
| alpha-Phellandrene | 0.0006600 | <LOQ | Geranyl acetate | 0.0006200 | 0.004500 |
| alpha-Pinene | 0.0004800 | 0.04680 | Guaiol | 0.0006000 | 0.03720 |
| alpha-Terpinene | 0.0002600 | <LOQ | Isoborneol | 0.0003400 | 0.008900 |
| alpha-Terpineol | 0.0003400 | 0.03060 | Isopulegol | 0.0006600 | <LOQ |
| beta-Myrcene | 0.0006400 | 0.08860 | Limonene | 0.0007400 | 0.2487 |
| beta-Pinene | 0.0006600 | 0.03770 | Linalool | 0.0004600 | 0.1095 |
| Borneol | 0.0004600 | 0.006600 | Menthol | 0.0004600 | <LOQ |
| Camphene | 0.0004400 | 0.01170 | Nerol | 0.0005000 | <LOQ |
| Camphor | 0.0004000 | <LOQ | Pulegone (+) | 0.0005600 | <LOQ |
| Caryophyllene oxide | 0.0005800 | 0.03360 | Sabinene | 0.0003400 | 0.04370 |
| Cedrene | 0.0004400 | <LOQ | Sabinene Hydrate | 0.0004200 | <LOQ |
| Cedrol | 0.0005600 | <LOQ | Terpinolene | 0.0005000 | 0.005900 |
| cis-Nerolidol | 0.0006800 | 0.03980 | trans-b-Ocimene | 0.0004200 | 0.007900 |
| cis-Ocimene | 0.0005200 | <LOQ | trans-Caryophyllene | 0.0006600 | 0.9379 |
| Eucalyptol | 0.0007200 | 0.007600 | trans-Nerolidol | 0.0007200 | 0.03120 |
| Farnesene | 0.0008400 | 0.04420 | Valencene | 0.0005600 | 0.06980 |
| Fenchone | 0.0005000 | 0.004300 | | | |

| Terpene Totals | % | Pass/Fail |
|----------------|-------|-----------|
| Total Terpenes | 2.333 | PASS |



Lindsey Vento 12/11/2024
 Micro Director

Lindsey Vento

Phyto-Farma Labs
 49 John Hicks Drive
 Warwick, NY 10990
 (845) 202-9737



This is a Phyto-Farma certification that relates only to the material tested and shall not be reproduced, unless in its entirety, without written approval from Phyto-Farma. Test results are confidential, unless explicitly waived. All Pass/Fail results please reference state regulations released on 01FEB2024. Pass/Fail results do not use uncertainty, but is available upon request. The product represented has been tested by Phyto-Farma Labs using validated scientific methodologies. Note action levels are state determined thresholds for human safety and consumption. Acronym Definitions: ND - Not Detected, LOQ - Limit of Quantification, ULOQ - Upper Limit of Quantification; are terms used to describe the reliably measured smallest and largest concentrations. <LOQ* denotes the result is above detection limit, but below quantifiable limit. CFU - Colony Forming Units. Cannabis Product Sampling SOP# SOP.T.20.010.



Hudson Cannabis c/o Hudson Valley Hemp Company, LLC
 Address: 67 Pine Wood Rd., Hudson, NY 12534
 Contact Name:
 Contact Phone:
 License #: OCM-PROC-24-000208
 Sample ID: 2412SMNY0397.1723



Phyto-Farma Labs
 a Smithers company

CERTIFICATE OF ANALYSIS

Permit #: OCM-CPL-00004

Certificate: 7616.2

Trace Metals

Pass

Sample Analysis

Date: 12/10/2024 11:29 AM

SOP: NY.SOPT.40.050

Analyzed By: ICP-MS

Sample Weight: 0.1354 g

Analyst: Destiny Ribadeneyra

| Analyte | LOQ (µg/g) | Action Limit (µg/g) | Results (µg/g) | Pass/Fail |
|----------------|------------|---------------------|----------------|-----------|
| Antimony (Sb)* | 0.315 | 2.00 | <LOQ | PASS |
| Arsenic (As)* | 0.180 | 0.200 | <LOQ | PASS |
| Cadmium (Cd)* | 0.159 | 0.200 | <LOQ | PASS |
| Chromium (Cr)* | 0.891 | 110 | <LOQ | PASS |
| Copper (Cu)* | 0.984 | 30.0 | <LOQ | PASS |
| Lead (Pb)* | 0.195 | 0.500 | <LOQ | PASS |
| Mercury (Hg)* | 0.0330 | 0.100 | <LOQ | PASS |
| Nickel (Ni)* | 0.273 | 2.00 | <LOQ | PASS |

* Analyte is not included in ISO 17025 scope of accreditation

Mycotoxin Analysis

Pass

Sample Analysis

Date: 12/09/2024 01:23 PM

SOP: NY.SOPT.40.180

Analyzed By: LC-MS/MS

Sample Weight: 0.1 g

Analyst: Stephanie Knapp

| Analyte | LOQ (µg/g) | Action Limit (µg/g) | Results (µg/g) | Pass/Fail |
|-------------------|------------|---------------------|----------------|-----------|
| Sum of Aflatoxins | - | 0.020 | 0 | PASS |
| Aflatoxin B1 | 0.0010 | 0.020 | <LOQ | PASS |
| Aflatoxin B2 | 0.0020 | 0.020 | <LOQ | PASS |
| Aflatoxin G1 | 0.0010 | 0.020 | <LOQ | PASS |
| Aflatoxin G2 | 0.0020 | 0.020 | <LOQ | PASS |
| Ochratoxin A | 0.0020 | 0.020 | <LOQ | PASS |

Lindsey Vento

12/11/2024

Lindsey Vento

Micro Director

Phyto-Farma Labs

49 John Hicks Drive
 Warwick, NY 10990
 (845) 202-9737



Accreditation #: 121747

This is a Phyto-Farma certification that relates only to the material tested and shall not be reproduced, unless in its entirety, without written approval from Phyto-Farma. Test results are confidential, unless explicitly waived. All Pass/Fail results please reference state regulations released on 01FEB2024. Pass/Fail results do not use uncertainty, but is available upon request. The product represented has been tested by Phyto-Farma Labs using validated scientific methodologies. Note action levels are state determined thresholds for human safety and consumption. Acronym Definitions: ND - Not Detected, LOQ - Limit of Quantification, ULOQ - Upper Limit of Quantification; are terms used to describe the reliably measured smallest and largest concentrations. <LOQ* denotes the result is above detection limit, but below quantifiable limit. CFU - Colony Forming Units. Cannabis Product Sampling SOP# SOP.T.20.010.



Hudson Cannabis c/o Hudson Valley Hemp Company, LLC
 Address: 67 Pine Wood Rd., Hudson, NY 12534
 Contact Name:
 Contact Phone:
 License #: OCM-PROC-24-000208
 Sample ID: 2412SMNY0397.1723

CERTIFICATE OF ANALYSIS
 Permit #: OCM-CPL-00004

Certificate: 7616.2

Pesticides LC

Pass

Sample Analysis

Date: 12/09/2024 07:39 PM

SOP: NY.SOPT.040.270

Analyzed By: LC-MS/MS

Sample Weight: 1 g

Analyst: Destiny Ribadeneyra

| Analyte | LOQ (ppm) | Action Limit (ppm) | Results (ppm) | Pass/Fail | Analyte | LOQ (ppm) | Action Limit (ppm) | Results (ppm) | Pass/Fail |
|------------------------|-----------|--------------------|---------------|-----------|------------------------|-----------|--------------------|---------------|-----------|
| Abamectin* | 0.0180 | 0.500 | <LOQ | PASS | Imidacloprid* | 0.00800 | 0.400 | <LOQ | PASS |
| Acephate* | 0.00700 | 0.400 | <LOQ | PASS | Indole-3-butyric acid* | 0.00700 | 1.00 | <LOQ | PASS |
| Acequinocyl* | 0.0160 | 2.00 | <LOQ | PASS | Kresoxim methyl* | 0.0120 | 0.400 | <LOQ | PASS |
| Acetamiprid* | 0.00500 | 0.200 | <LOQ | PASS | Malathion* | 0.0110 | 0.200 | <LOQ | PASS |
| Aldicarb* | 0.00500 | 0.400 | <LOQ | PASS | Metalaxyl* | 0.0120 | 0.200 | <LOQ | PASS |
| Azadirachtin* | 0.0220 | 1.00 | <LOQ | PASS | Methiocarb* | 0.00400 | 0.200 | <LOQ | PASS |
| Azoxystrobin* | 0.00600 | 0.200 | <LOQ | PASS | Methomyl* | 0.0120 | 0.400 | <LOQ | PASS |
| Bifenazate* | 0.00600 | 0.200 | <LOQ | PASS | Mevinphos* | 0.0190 | 1.00 | <LOQ | PASS |
| Bifenthrin* | 0.00300 | 0.200 | <LOQ | PASS | MGK-264* | 0.0110 | 0.200 | <LOQ | PASS |
| Boscalid* | 0.0110 | 0.400 | <LOQ | PASS | Myclobutanil* | 0.0130 | 0.200 | <LOQ | PASS |
| Carbaryl* | 0.00600 | 0.200 | <LOQ | PASS | Naled* | 0.00500 | 0.500 | <LOQ | PASS |
| Carbofuran* | 0.00500 | 0.200 | <LOQ | PASS | Oxamyl* | 0.00800 | 1.00 | <LOQ | PASS |
| Chlorantraniliprole* | 0.00600 | 0.200 | <LOQ | PASS | Paclobutrazol* | 0.0150 | 0.400 | <LOQ | PASS |
| Chloromequat chloride* | 0.0190 | 1.00 | <LOQ | PASS | Permethrins, Total* | 0.00900 | 0.200 | <LOQ | PASS |
| Chlorpyrifos* | 0.00900 | 0.200 | <LOQ | PASS | Phosmet* | 0.00700 | 0.200 | <LOQ | PASS |
| Clofentezine* | 0.0100 | 0.200 | <LOQ | PASS | Piperonyl Butoxide* | 0.00600 | 2.00 | <LOQ | PASS |
| Daminozide* | 0.00400 | 1.00 | <LOQ | PASS | Prallethrin* | 0.00800 | 0.200 | <LOQ | PASS |
| Diazinon* | 0.00700 | 0.200 | <LOQ | PASS | Propiconazole* | 0.00600 | 0.400 | <LOQ | PASS |
| Dichlorvos* | 0.0120 | 1.00 | <LOQ | PASS | Propoxur* | 0.00800 | 0.200 | <LOQ | PASS |
| Dimethoate* | 0.00600 | 0.200 | <LOQ | PASS | Pyrethrins* | 0.0140 | 1.00 | <LOQ | PASS |
| Dimethomorph* | 0.00500 | 1.00 | <LOQ | PASS | Pyridaben* | 0.00600 | 0.200 | <LOQ | PASS |
| Ethoprophos* | 0.0130 | 0.200 | <LOQ | PASS | Spinetoram, Total* | 0.00500 | 1.00 | <LOQ | PASS |
| Etofenprox* | 0.00300 | 0.400 | <LOQ | PASS | Spinosad, Total* | 0.00600 | 0.200 | <LOQ | PASS |
| Etoxazole* | 0.00500 | 0.200 | <LOQ | PASS | Spiromesifen* | 0.0130 | 0.200 | <LOQ | PASS |
| Fenhexamid* | 0.0150 | 1.00 | <LOQ | PASS | Spirotetramat* | 0.00600 | 0.200 | <LOQ | PASS |
| Fenoxycarb* | 0.0110 | 0.200 | <LOQ | PASS | Spiroxamine* | 0.00400 | 0.200 | <LOQ | PASS |
| Fenpyroximate* | 0.00200 | 0.400 | <LOQ | PASS | Tebuconazole* | 0.0120 | 0.400 | <LOQ | PASS |
| Fonicamid* | 0.00700 | 1.00 | <LOQ | PASS | Thiacloprid* | 0.00800 | 0.200 | <LOQ | PASS |
| Fludioxonil* | 0.0170 | 0.400 | <LOQ | PASS | Thiamethoxam* | 0.00800 | 0.200 | <LOQ | PASS |
| Hexythiazox* | 0.00500 | 1.00 | <LOQ | PASS | | | | | |

* Analyte is not included in ISO 17025 scope of accreditation

Lindsey Vento

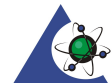
12/11/2024

Lindsey Vento

Micro Director

Phyto-Farma Labs

49 John Hicks Drive
 Warwick, NY 10990
 (845) 202-9737



Accreditation #: 121747

This is a Phyto-Farma certification that relates only to the material tested and shall not be reproduced, unless in its entirety, without written approval from Phyto-Farma. Test results are confidential, unless explicitly waived. All Pass/Fail results please reference state regulations released on 01FEB2024. Pass/Fail results do not use uncertainty, but is available upon request. The product represented has been tested by Phyto-Farma Labs using validated scientific methodologies. Note action levels are state determined thresholds for human safety and consumption. Acronym Definitions: ND - Not Detected, LOQ - Limit of Quantification, ULOQ - Upper Limit of Quantification, are terms used to describe the reliably measured smallest and largest concentrations. <LOQ* denotes the result is above detection limit, but below quantifiable limit. CFU - Colony Forming Units. Cannabis Product Sampling SOP# SOP.T.20.010.



Hudson Cannabis c/o Hudson Valley Hemp Company, LLC
 Address: 67 Pine Wood Rd., Hudson, NY 12534
 Contact Name:
 Contact Phone:
 License #: OCM-PROC-24-000208
 Sample ID: 2412SMNY0397.1723



Phyto-Farma Labs
 a Smithers company

CERTIFICATE OF ANALYSIS

Permit #: OCM-CPL-00004

Certificate: 7616.2

Pesticides GC

Pass

Sample Analysis

Date: 12/10/2024 04:00 PM

SOP: NYS.SOPT.040.271

Analyzed By: GC-MS/MS

Sample Weight: N/A

Analyst: Destiny Ribadeneyra

| Analyte | LOQ (ppm) | Action Limit (ppm) | Results (ppm) | Pass/Fail |
|--------------------------|-----------|--------------------|---------------|-----------|
| Captan* | 0.300 | 1.00 | <LOQ | PASS |
| Chlordane* | 0.0700 | 1.00 | <LOQ | PASS |
| Chlorfenapyr* | 0.100 | 1.00 | <LOQ | PASS |
| Coumaphos* | 0.190 | 1.00 | <LOQ | PASS |
| Cyfluthrin* | 0.110 | 1.00 | <LOQ | PASS |
| Cypermethrin* | 0.240 | 1.00 | <LOQ | PASS |
| Fipronil* | 0.170 | 0.400 | <LOQ | PASS |
| Imazalil* | 0.170 | 0.200 | <LOQ | PASS |
| Methyl parathion* | 0.0900 | 0.200 | <LOQ | PASS |
| Pentachloronitrobenzene* | 0.170 | 1.00 | <LOQ | PASS |
| Trifloxystrobin* | 0.110 | 0.200 | <LOQ | PASS |

* Analyte is not included in ISO 17025 scope of accreditation

Lindsey Vento

12/11/2024

Lindsey Vento

Micro Director

Phyto-Farma Labs

49 John Hicks Drive
 Warwick, NY 10990
 (845) 202-9737



Accreditation #: 121747

This is a Phyto-Farma certification that relates only to the material tested and shall not be reproduced, unless in its entirety, without written approval from Phyto-Farma. Test results are confidential, unless explicitly waived. All Pass/Fail results please reference state regulations released on 01FEB2024. Pass/Fail results do not use uncertainty, but is available upon request. The product represented has been tested by Phyto-Farma Labs using validated scientific methodologies. Note action levels are state determined thresholds for human safety and consumption. Acronym Definitions: ND - Not Detected, LOQ - Limit of Quantification, ULOQ - Upper Limit of Quantification; are terms used to describe the reliably measured smallest and largest concentrations. <LOQ* denotes the result is above detection limit, but below quantifiable limit. CFU - Colony Forming Units. Cannabis Product Sampling SOP# SOP.T.20.010.



Hudson Cannabis c/o Hudson Valley Hemp Company, LLC
 Address: 67 Pine Wood Rd., Hudson, NY 12534
 Contact Name:
 Contact Phone:
 License #: OCM-PROC-24-000208
 Sample ID: 2412SMNY0397.1723



Phyto-Farma Labs
 a Smithers company

CERTIFICATE OF ANALYSIS

Permit #: OCM-CPL-00004

Certificate: 7616.2

Residual Solvents

Pass

Sample Analysis

Date: 12/09/2024 01:46 PM

SOP: NYS.SOPT.040.272

Analyzed By: GC-MS

Sample Weight: 0.0909 g

Analyst: Stephanie Knapp

| Analyte | LOQ (ppm) | Action Limit (ppm) | Results (ppm) | Pass/Fail |
|---|-----------|--------------------|---------------|-----------|
| 1,2-Dichloroethane (Ethylene dichloride, Ethylene chloride) | 0.100 | 5.00 | <LOQ | PASS |
| 2-Propanol (Isopropanol, Isopropyl alcohol) | 125 | 5000 | <LOQ | PASS |
| Acetone (2-Propanone) | 125 | 5000 | <LOQ | PASS |
| Acetonitrile | 23.6 | 410 | <LOQ | PASS |
| Benzene | 0.100 | 2.00 | <LOQ | PASS |
| Butanes, Total | 62.5 | 5000 | <LOQ | PASS |
| Chloroform | 1.50 | 60.0 | <LOQ | PASS |
| Dichloromethane (Methylene chloride) | 15.0 | 600 | <LOQ | PASS |
| Dimethyl sulfoxide (DMSO) | 125 | 5000 | <LOQ | PASS |
| Ethanol (Ethyl alcohol) | 125 | 5000 | <LOQ | PASS |
| Ethyl acetate (Acetic acid ethyl ester) | 125 | 5000 | <LOQ | PASS |
| Ethyl ether (Diethyl ether, 1,1'-Oxybisethane) | 125 | 5000 | <LOQ | PASS |
| Heptane (n-Heptane) | 125 | 5000 | <LOQ | PASS |
| Hexanes, Total | 14.5 | 290 | <LOQ | PASS |
| Methanol (Methyl alcohol) | 75.1 | 3000 | <LOQ | PASS |
| Pentanes, Total | 195 | 5000 | <LOQ | PASS |
| Propane | 63.0 | 5000 | <LOQ | PASS |
| Toluene (Methylbenzene) | 22.3 | 890 | <LOQ | PASS |
| Trichloroethane (1,1,1-) | 37.6 | 1500 | <LOQ | PASS |
| Tetrafluoroethane (1,1,1,2-) (HFC134a)* | 10.0 | 1000 | <LOQ | PASS |
| Xylenes, Total (ortho-, meta-, para-) | 109 | 2170 | <LOQ | PASS |

* Analyte is not included in ISO 17025 scope of accreditation

Lindsey Vento

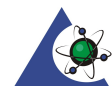
12/11/2024

Lindsey Vento

Micro Director

Phyto-Farma Labs

49 John Hicks Drive
 Warwick, NY 10990
 (845) 202-9737



Accreditation #: 121747

This is a Phyto-Farma certification that relates only to the material tested and shall not be reproduced, unless in its entirety, without written approval from Phyto-Farma. Test results are confidential, unless explicitly waived. All Pass/Fail results please reference state regulations released on 01FEB2024. Pass/Fail results do not use uncertainty, but is available upon request. The product represented has been tested by Phyto-Farma Labs using validated scientific methodologies. Note action levels are state determined thresholds for human safety and consumption. Acronym Definitions: ND - Not Detected, LOQ - Limit of Quantification, ULOQ - Upper Limit of Quantification; are terms used to describe the reliably measured smallest and largest concentrations. <LOQ* denotes the result is above detection limit, but below quantifiable limit. CFU - Colony Forming Units. Cannabis Product Sampling SOP# SOP.T.20.010.



Hudson Cannabis c/o Hudson Valley Hemp Company, LLC
 Address: 67 Pine Wood Rd., Hudson, NY 12534
 Contact Name:
 Contact Phone:
 License #: OCM-PROC-24-000208
 Sample ID: 2412SMNY0397.1723



Phyto-Farma Labs
 a Smithers company

CERTIFICATE OF ANALYSIS

Permit #: OCM-CPL-00004

Certificate: 7616.2

Microbial Impurities - MDG

Pass

Sample Analysis

Date: 12/10/2024 02:40 PM

SOP: NYS.SOPT.40.273

Analyzed By: PCR

Analyst: Kristy Lee

| Analyte | Microbial Type | LOQ (CFU/g) | Allowable Limit | Results | Pass/Fail |
|--|----------------|-------------|-----------------|--------------|-----------|
| Shiga toxin-producing Escherichia coli | Bacterial | 1 | Not Detected | Not Detected | PASS |
| Salmonella species | Bacterial | 1 | Not Detected | Not Detected | PASS |
| Aspergillus flavus | Fungal | 1 | Not Detected | Not Detected | PASS |
| Aspergillus niger | Fungal | 1 | Not Detected | Not Detected | PASS |
| Aspergillus terreus | Fungal | 1 | Not Detected | Not Detected | PASS |
| Aspergillus fumigatus | Fungal | 1 | Not Detected | Not Detected | PASS |

Lindsey Vento

12/11/2024

Lindsey Vento

Micro Director

Phyto-Farma Labs

49 John Hicks Drive
 Warwick, NY 10990
 (845) 202-9737



Accreditation #: 121747

This is a Phyto-Farma certification that relates only to the material tested and shall not be reproduced, unless in its entirety, without written approval from Phyto-Farma. Test results are confidential, unless explicitly waived. All Pass/Fail results please reference state regulations released on 01FEB2024. Pass/Fail results do not use uncertainty, but is available upon request. The product represented has been tested by Phyto-Farma Labs using validated scientific methodologies. Note action levels are state determined thresholds for human safety and consumption. Acronym Definitions: ND - Not Detected, LOQ - Limit of Quantification, ULOQ - Upper Limit of Quantification; are terms used to describe the reliably measured smallest and largest concentrations. <LOQ> denotes the result is above detection limit, but below quantifiable limit. CFU - Colony Forming Units. Cannabis Product Sampling SOP# SOP.T.20.010.



Hudson Cannabis c/o Hudson Valley Hemp Company, LLC
 Address: 67 Pine Wood Rd., Hudson, NY 12534
 Contact Name:
 Contact Phone:
 License #: OCM-PROC-24-000208
 Sample ID: 2412SMNY0397.1723



Phyto-Farma Labs
 a Smithers company

CERTIFICATE OF ANALYSIS

Permit #: OCM-CPL-00004

Certificate: 7616.2

Microbial Impurities - TAPC

Pass

Sample Analysis

Date: 12/09/2024 02:57 PM

SOP: NYS.SOPT.040.200

Analyzed By: Plating

Analyst: Kristy Lee

| Analyte | LOQ (CFU/g) | Action Limit (CFU/g) | Results (CFU/g) | Pass/Fail |
|-------------------------------|-------------|----------------------|-----------------|-----------|
| Total Aerobic Bacteria/CDP-TC | 5 | 10000 | <LOQ | PASS |

Microbial Impurities - TYMC

Pass

Sample Analysis

Date: 12/10/2024 10:04 AM

SOP: NYS.SOPT.040.200

Analyzed By: Plating

Analyst: Kristy Lee

| Analyte | LOQ (CFU/g) | Action Limit (CFU/g) | Results (CFU/g) | Pass/Fail |
|----------------------|-------------|----------------------|-----------------|-----------|
| Total Yeast and Mold | 5 | 1000 | <LOQ | PASS |
| Mold Count | 5 | 1000 | <LOQ | PASS |
| Yeast Count | 5 | 1000 | <LOQ | PASS |

Lindsey Vento

12/11/2024

Lindsey Vento

Micro Director

Phyto-Farma Labs

49 John Hicks Drive
 Warwick, NY 10990
 (845) 202-9737



Accreditation #: 121747

This is a Phyto-Farma certification that relates only to the material tested and shall not be reproduced, unless in its entirety, without written approval from Phyto-Farma. Test results are confidential, unless explicitly waived. All Pass/Fail results please reference state regulations released on 01FEB2024. Pass/Fail results do not use uncertainty, but is available upon request. The product represented has been tested by Phyto-Farma Labs using validated scientific methodologies. Note action levels are state determined thresholds for human safety and consumption. Acronym Definitions: ND - Not Detected, LOQ - Limit of Quantification, ULOQ - Upper Limit of Quantification; are terms used to describe the reliably measured smallest and largest concentrations. <LOQ* denotes the result is above detection limit, but below quantifiable limit. CFU - Colony Forming Units. Cannabis Product Sampling SOP# SOP.T.20.010.