



**Mill Lane Chemist**  
 Address: 6309 Mill Lane, Brooklyn, NY 11234  
 Contact Name:  
 Contact Phone:  
 License #: OCM-PROC-24-000034  
 Sample ID: 2410SMNY0258.1074



**Phyto-Farma Labs**  
 a Smithers company

**CERTIFICATE OF ANALYSIS**

Permit #: OCM-CPL-00004

Certificate: 6957.1

**Red Velvet**

Lot #: BBRV-15474-152411  
 Sample ID: 2410SMNY0258.1074  
 Regulatory Category: Adult Use  
 Received: 10/24/2024  
 Sampling Location: 6309 Mill Lane,  
 Brooklyn, NY 11234

Lot Size: 907  
 Sample Type: Flower  
 Amount Received: 8  
 Sample Collected: 10/23/2024 12:00 AM  
 Published: 10/30/2024



**COMPLIANCE FOR RETAIL**

Cannabinoid Profile <b>Pass</b>	Terpenes Total <b>Pass</b>	Residual Solvents <b>Not Tested</b>	<b>Pass</b> Sample Status
Pesticides <b>Pass</b>	Mycotoxins <b>Pass</b>	Water Activity <b>Pass</b>	<b>18.5%</b> Total THC
Trace Metals <b>Pass</b>	Microbial Contaminants <b>Pass</b>	Moisture Analysis <b>Pass</b>	<b>0.0744%</b> Total CBD
	Filth & Foreign <b>Pass</b>		<b>19.3 %</b> Total Cannabinoids

Report Notes: N/A

**Alicia Caruso-Thomas**  
 Laboratory Director

10/30/2024  
*Alicia Caruso-Thomas*

**Phyto-Farma Labs**  
 49 John Hicks Drive  
 Warwick, NY 10990  
 (845) 202-9737



This is a Phyto-Farma certification that relates only to the material tested and shall not be reproduced, unless in its entirety, without written approval from Phyto-Farma. Test results are confidential, unless explicitly waived. All Pass/Fail results please reference state regulations released on 01FEB2024. Pass/Fail results do not use uncertainty, but is available upon request. The product represented has been tested by Phyto-Farma Labs using validated scientific methodologies. Note action levels are state determined thresholds for human safety and consumption. Acronym Definitions: ND - Not Detected, LOQ - Limit of Quantification, ULOQ - Upper Limit of Quantification; are terms used to describe the reliably measured smallest and largest concentrations. <LOQ> denotes the result is above detection limit, but below quantifiable limit. CFU - Colony Forming Units. Cannabis Product Sampling SOP# SOP.T.20.010.



Mill Lane Chemist  
 Address: 6309 Mill Lane, Brooklyn, NY 11234  
 Contact Name:  
 Contact Phone:  
 License #: OCM-PROC-24-000034  
 Sample ID: 2410SMNY0258.1074

Certificate: 6957.1

**Average Cannabinoid Profile**

**Pass**

**Sample Analysis**

**Date:** 10/28/2024 04:02 PM  
**Analyzed By:** HPLC  
**Analyst:** Stephanie Knapp

**SOP:** NY.SOPT.40.260  
**Sample Weight:** N/A

Analyte	LOQ (%)	Average % (w/w)	mg/serving	Homogeneity <sup>†</sup>
Total Tetrahydrocannabinol (THC)	-	18.5	648	
Tetrahydrocannabinolic acid (THCA)	0.500	20.4	713	
Δ8-THC	0.500	<LOQ	<LOQ	
Δ9-THC	0.500	0.561	19.6	
Δ10-THC-RS	0.500	<LOQ	<LOQ	
Δ10-THC-RR	0.500	0.0838	2.93	
Total Cannabidiol (CBD)	-	0.0744	2.60	
Cannabinadiolic acid (CBDA)	0.500	0.0848	2.97	
Cannabidiol (CBD)	0.500	<LOQ	<LOQ	
Total Active Tetrahydrocannabivarin (THCV)	-	0.0862	3.02	
Tetrahydrocannabivarinic acid (THCVA)*	0.500	0.0994	3.48	
Tetrahydrocannabivarin (THCV)	0.500	<LOQ	<LOQ	
Total Active Cannabigerol (CBG)	-	0.559	19.6	
Cannabigerolic acid (CBGA)	0.500	0.457	16.0	
Cannabigerol (CBG)	0.500	0.158	5.52	
Cannabidivarin (CBDV)	0.500	<LOQ	<LOQ	
Cannabinol (CBN)	0.500	0.0376	1.32	
Cannabichromene (CBC)	0.500	<LOQ	<LOQ	

Cannabinoid Totals	Actual % (w/w)	mg/serving	Homogeneity <sup>†</sup>
Total Cannabinoids	19.3	674	

\* Analyte is not included in ISO 17025 scope of accreditation  
 † Concentration of individual samples must be ±25% of the mean concentration  
 Total Active CBD = CBD + (0.877 x CBDA); Total Active CBG = CBG + (0.878 x CBGA);  
 Total Active THC = (Δ9THC + Δ8THC + Δ10THC-RS + Δ10THC-RR) + (0.877 x THCA);  
 Total Active THCV = THCV + (0.867 x THCVA);

Serving Weight: 3.5 g

**Alicia Caruso-Thomas**  
 Laboratory Director

10/30/2024  
*Alicia Caruso-Thomas*

**Phyto-Farma Labs**  
 49 John Hicks Drive  
 Warwick, NY 10990  
 (845) 202-9737



This is a Phyto-Farma certification that relates only to the material tested and shall not be reproduced, unless in its entirety, without written approval from Phyto-Farma. Test results are confidential, unless explicitly waived. All Pass/Fail results please reference state regulations released on 01FEB2024. Pass/Fail results do not use uncertainty, but is available upon request. The product represented has been tested by Phyto-Farma Labs using validated scientific methodologies. Note action levels are state determined thresholds for human safety and consumption. Acronym Definitions: ND - Not Detected, LOQ - Limit of Quantification, ULOQ - Upper Limit of Quantification; are terms used to describe the reliably measured smallest and largest concentrations. <LOQ\* denotes the result is above detection limit, but below quantifiable limit. CFU - Colony Forming Units. Cannabis Product Sampling SOP# SOP.T.20.010.



**Mill Lane Chemist**  
 Address: 6309 Mill Lane, Brooklyn, NY 11234  
 Contact Name:  
 Contact Phone:  
 License #: OCM-PROC-24-000034  
 Sample ID: 2410SMNY0258.1074

Certificate: 6957.1

**Terpene Total**

**Pass (1.872%)**

**Sample Analysis**

Date: 10/28/2024 02:41 PM

SOP: NY.SOPT.40.090

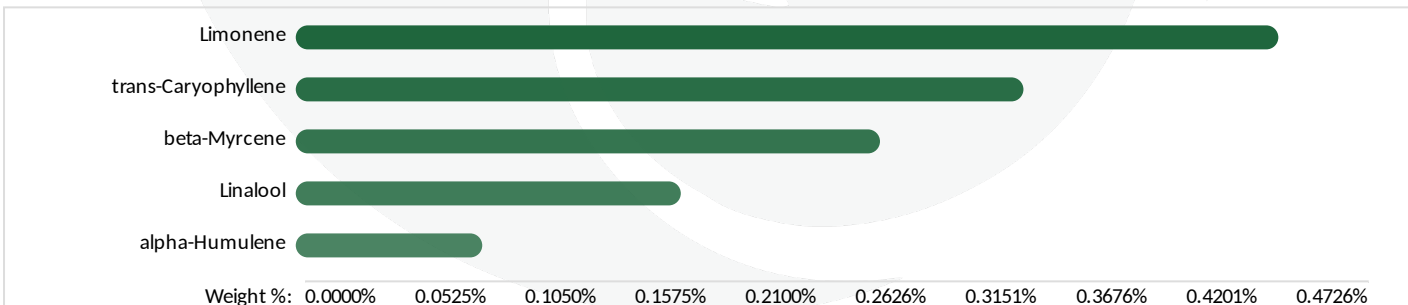
Sample Weight: 0.171 g

Analyzed By: GC-MS

Analyst: Stephanie Knapp

Analyte	LOQ (%)	Results (%)	Analyte	LOQ (%)	Results (%)
3-Carene	0.0004200	<LOQ	gamma-Terpinene	0.0004400	<LOQ
alpha-Bisabolol	0.0005000	0.02630	gamma-Terpineol	0.0003000	<LOQ
alpha-Humulene	0.0005600	0.08970	Geraniol	0.0004800	<LOQ
alpha-Phellandrene	0.0006600	<LOQ	Geranyl acetate	0.0006200	<LOQ
alpha-Pinene	0.0004800	0.06290	Guaial	0.0006000	<LOQ
alpha-Terpinene	0.0002600	<LOQ	Isoborneol	0.0003400	0.02060
alpha-Terpineol	0.0003400	0.06870	Isopulegol	0.0006600	<LOQ
beta-Myrcene	0.0006400	0.2810	Limonene	0.0007400	0.4726
beta-Pinene	0.0006600	0.05750	Linalool	0.0004600	0.1852
Borneol	0.0004600	0.01550	Menthol	0.0004600	<LOQ
Camphene	0.0004400	0.01130	Nerol	0.0005000	<LOQ
Camphor	0.0004000	<LOQ	Pulegone (+)	0.0005600	<LOQ
Caryophyllene oxide	0.0005800	<LOQ	Sabinene	0.0003400	0.06650
Cedrene	0.0004400	<LOQ	Sabinene Hydrate	0.0004200	<LOQ
Cedrol	0.0005600	<LOQ	Terpinolene	0.0005000	<LOQ
cis-Nerolidol	0.0006800	0.01520	trans-b-Ocimene	0.0004200	0.01550
cis-Ocimene	0.0005200	<LOQ	trans-Caryophyllene	0.0006600	0.3500
Eucalyptol	0.0007200	<LOQ	trans-Nerolidol	0.0007200	0.03390
Farnesene	0.0008400	0.01930	Valencene	0.0005600	0.01840
Fenchone	0.0005000	<LOQ			

Terpene Totals	%	Pass/Fail
Total Terpenes	1.872	PASS



**Alicia Caruso-Thomas**  
 Laboratory Director

10/30/2024  
*Alicia Caruso-Thomas*

**Phyto-Farma Labs**  
 49 John Hicks Drive  
 Warwick, NY 10990  
 (845) 202-9737



This is a Phyto-Farma certification that relates only to the material tested and shall not be reproduced, unless in its entirety, without written approval from Phyto-Farma. Test results are confidential, unless explicitly waived. All Pass/Fail results please reference state regulations released on 01FEB2024. Pass/Fail results do not use uncertainty, but is available upon request. The product represented has been tested by Phyto-Farma Labs using validated scientific methodologies. Note action levels are state determined thresholds for human safety and consumption. Acronym Definitions: ND - Not Detected, LOQ - Limit of Quantification, ULOQ - Upper Limit of Quantification; are terms used to describe the reliably measured smallest and largest concentrations. <LOQ\* denotes the result is above detection limit, but below quantifiable limit. CFU - Colony Forming Units. Cannabis Product Sampling SOP# SOP.20.010.



Mill Lane Chemist  
 Address: 6309 Mill Lane, Brooklyn, NY 11234  
 Contact Name:  
 Contact Phone:  
 License #: OCM-PROC-24-000034  
 Sample ID: 2410SMNY0258.1074



**Phyto-Farma Labs**  
 a Smithers company

**CERTIFICATE OF ANALYSIS**

Permit #: OCM-CPL-00004

Certificate: 6957.1

**Trace Metals**

**Pass**

**Sample Analysis**

Date: 10/30/2024 10:20 AM

SOP: NY.SOPT.40.050

Analyzed By: ICP-MS

Sample Weight: 0.1354 g

Analyst: Moni Kaneti

Analyte	LOQ (µg/g)	Action Limit (µg/g)	Results (µg/g)	Pass/Fail
Antimony (Sb)*	0.130	2.00	<LOQ	PASS
Arsenic (As)*	0.0700	0.200	<LOQ	PASS
Cadmium (Cd)*	0.0600	0.200	<LOQ	PASS
Chromium (Cr)*	0.360	110	<LOQ	PASS
Copper (Cu)*	0.390	30.0	11.0	PASS
Lead (Pb)*	0.0800	0.500	<LOQ	PASS
Mercury (Hg)*	0.0100	0.100	<LOQ	PASS
Nickel (Ni)*	0.110	5.00	0.214	PASS

\* Analyte is not included in ISO 17025 scope of accreditation

**Mycotoxin Analysis**

**Pass**

**Sample Analysis**

Date: 10/28/2024 11:25 AM

SOP: NY.SOPT.40.180

Analyzed By: LC-MS/MS

Sample Weight: 0.1 g

Analyst: Destiny Ribadeneyra

Analyte	LOQ (µg/g)	Action Limit (µg/g)	Results (µg/g)	Pass/Fail
Sum of Aflatoxins	-	0.020	0	PASS
Aflatoxin B1	0.0010	0.020	<LOQ	PASS
Aflatoxin B2	0.0020	0.020	<LOQ	PASS
Aflatoxin G1	0.0010	0.020	<LOQ	PASS
Aflatoxin G2	0.0020	0.020	<LOQ	PASS
Ochratoxin A	0.0020	0.020	<LOQ	PASS

Alicia Caruso-Thomas

10/30/2024

*Alicia Caruso-Thomas*

Laboratory Director

Phyto-Farma Labs

49 John Hicks Drive  
 Warwick, NY 10990  
 (845) 202-9737



Accreditation #: 121747

This is a Phyto-Farma certification that relates only to the material tested and shall not be reproduced, unless in its entirety, without written approval from Phyto-Farma. Test results are confidential, unless explicitly waived. All Pass/Fail results please reference state regulations released on 01FEB2024. Pass/Fail results do not use uncertainty, but is available upon request. The product represented has been tested by Phyto-Farma Labs using validated scientific methodologies. Note action levels are state determined thresholds for human safety and consumption. Acronym Definitions: ND - Not Detected, LOQ - Limit of Quantification, ULOQ - Upper Limit of Quantification; are terms used to describe the reliably measured smallest and largest concentrations. <LOQ\* denotes the result is above detection limit, but below quantifiable limit. CFU - Colony Forming Units. Cannabis Product Sampling SOP# SOP.T.20.010.



Mill Lane Chemist  
 Address: 6309 Mill Lane, Brooklyn, NY 11234  
 Contact Name:  
 Contact Phone:  
 License #: OCM-PROC-24-000034  
 Sample ID: 2410SMNY0258.1074

**CERTIFICATE OF ANALYSIS**  
 Permit #: OCM-CPL-00004

Certificate: 6957.1

**Pesticides LC**

**Pass**

**Sample Analysis**

Date: 10/28/2024 11:19 AM

SOP: NY.SOPT.040.270

Analyzed By: LC-MS/MS

Sample Weight: 1 g

Analyst: Stephanie Knapp

Analyte	LOQ (ppm)	Action Limit (ppm)	Results (ppm)	Pass/Fail	Analyte	LOQ (ppm)	Action Limit (ppm)	Results (ppm)	Pass/Fail
Abamectin*	0.0180	0.500	<LOQ	PASS	Imidacloprid*	0.00800	0.400	<LOQ	PASS
Acephate*	0.00700	0.400	<LOQ	PASS	Indole-3-butyric acid*	0.00700	1.00	<LOQ	PASS
Acequinocyl*	0.0160	2.00	<LOQ	PASS	Kresoxim methyl*	0.0120	0.400	<LOQ	PASS
Acetamiprid*	0.00500	0.200	<LOQ	PASS	Malathion*	0.0110	0.200	<LOQ	PASS
Aldicarb*	0.00500	0.400	<LOQ	PASS	Metalaxyl*	0.0120	0.200	<LOQ	PASS
Azadirachtin*	0.0220	1.00	<LOQ	PASS	Methiocarb*	0.00400	0.200	<LOQ	PASS
Azoxystrobin*	0.00600	0.200	<LOQ	PASS	Methomyl*	0.0120	0.400	<LOQ	PASS
Bifenazate*	0.00600	0.200	<LOQ	PASS	Mevinphos*	0.0190	1.00	<LOQ	PASS
Bifenthrin*	0.00300	0.200	<LOQ	PASS	MGK-264*	0.0110	0.200	<LOQ	PASS
Boscalid*	0.0110	0.400	<LOQ	PASS	Myclobutanil*	0.0130	0.200	<LOQ	PASS
Carbaryl*	0.00600	0.200	<LOQ	PASS	Naled*	0.00500	0.500	<LOQ	PASS
Carbofuran*	0.00500	0.200	<LOQ	PASS	Oxamyl*	0.00800	1.00	<LOQ	PASS
Chlorantraniliprole*	0.00600	0.200	<LOQ	PASS	Paclobutrazol*	0.0150	0.400	<LOQ	PASS
Chloromequat chloride*	0.0190	1.00	<LOQ	PASS	Permethrins, Total*	0.00900	0.200	<LOQ	PASS
Chlorpyrifos*	0.00900	0.200	<LOQ	PASS	Phosmet*	0.00700	0.200	<LOQ	PASS
Clofentezine*	0.0100	0.200	<LOQ	PASS	Piperonyl Butoxide*	0.00600	2.00	<LOQ	PASS
Daminozide*	0.00400	1.00	<LOQ	PASS	Prallethrin*	0.00800	0.200	<LOQ	PASS
Diazinon*	0.00700	0.200	<LOQ	PASS	Propiconazole*	0.00600	0.400	<LOQ	PASS
Dichlorvos*	0.0120	1.00	<LOQ	PASS	Propoxur*	0.00800	0.200	<LOQ	PASS
Dimethoate*	0.00600	0.200	<LOQ	PASS	Pyrethrins*	0.0140	1.00	<LOQ	PASS
Dimethomorph*	0.00500	1.00	<LOQ	PASS	Pyridaben*	0.00600	0.200	<LOQ	PASS
Ethoprophos*	0.0130	0.200	<LOQ	PASS	Spinetoram, Total*	0.00500	1.00	<LOQ	PASS
Etofenprox*	0.00300	0.400	<LOQ	PASS	Spinosad, Total*	0.00600	0.200	<LOQ	PASS
Etoxazole*	0.00500	0.200	<LOQ	PASS	Spiromesifen*	0.0130	0.200	<LOQ	PASS
Fenhexamid*	0.0150	1.00	<LOQ	PASS	Spirotetramat*	0.00600	0.200	<LOQ	PASS
Fenoxycarb*	0.0110	0.200	<LOQ	PASS	Spiroxamine*	0.00400	0.200	<LOQ	PASS
Fenpyroximate*	0.00200	0.400	<LOQ	PASS	Tebuconazole*	0.0120	0.400	<LOQ	PASS
Flonicamid*	0.00700	1.00	<LOQ	PASS	Thiacloprid*	0.00800	0.200	<LOQ	PASS
Fludioxonil*	0.0170	0.400	<LOQ	PASS	Thiamethoxam*	0.00800	0.200	<LOQ	PASS
Hexythiazox*	0.00500	1.00	<LOQ	PASS					

\* Analyte is not included in ISO 17025 scope of accreditation

**Alicia Caruso-Thomas**  
 Laboratory Director

10/30/2024  
*Alicia Caruso-Thomas*

**Phyto-Farma Labs**  
 49 John Hicks Drive  
 Warwick, NY 10990  
 (845) 202-9737



This is a Phyto-Farma certification that relates only to the material tested and shall not be reproduced, unless in its entirety, without written approval from Phyto-Farma. Test results are confidential, unless explicitly waived. All Pass/Fail results please reference state regulations released on 01FEB2024. Pass/Fail results do not use uncertainty, but is available upon request. The product represented has been tested by Phyto-Farma Labs using validated scientific methodologies. Note action levels are state determined thresholds for human safety and consumption. Acronym Definitions: ND - Not Detected, LOQ - Limit of Quantification, ULOQ - Upper Limit of Quantification, are terms used to describe the reliably measured smallest and largest concentrations. <LOQ\* denotes the result is above detection limit, but below quantifiable limit. CFU - Colony Forming Units. Cannabis Product Sampling SOP# SOP.T.20.010.



Mill Lane Chemist  
 Address: 6309 Mill Lane, Brooklyn, NY 11234  
 Contact Name:  
 Contact Phone:  
 License #: OCM-PROC-24-000034  
 Sample ID: 2410SMNY0258.1074



**Phyto-Farma Labs**  
 a Smithers company

**CERTIFICATE OF ANALYSIS**

Permit #: OCM-CPL-00004

Certificate: 6957.1

**Pesticides GC**

**Pass**

**Sample Analysis**

**Date:** 10/28/2024 12:43 PM

**SOP:** NYS.SOPT.040.271

**Analyzed By:** GC-MS/MS

**Sample Weight:** N/A

**Analyst:** Stephanie Knapp

Analyte	LOQ (ppm)	Action Limit (ppm)	Results (ppm)	Pass/Fail
Captan*	0.300	1.00	<LOQ	PASS
Chlordane*	0.0700	1.00	<LOQ	PASS
Chlorfenapyr*	0.100	1.00	<LOQ	PASS
Coumaphos*	0.190	1.00	<LOQ	PASS
Cyfluthrin*	0.110	1.00	<LOQ	PASS
Cypermethrin*	0.240	1.00	<LOQ	PASS
Fipronil*	0.170	0.400	<LOQ	PASS
Imazalil*	0.170	0.200	<LOQ	PASS
Methyl parathion*	0.0900	0.200	<LOQ	PASS
Pentachloronitrobenzene*	0.170	1.00	<LOQ	PASS
Trifloxystrobin*	0.110	0.200	<LOQ	PASS

\* Analyte is not included in ISO 17025 scope of accreditation

**Alicia Caruso-Thomas**

10/30/2024

*Alicia Caruso-Thomas*

Laboratory Director

**Phyto-Farma Labs**

49 John Hicks Drive  
 Warwick, NY 10990  
 (845) 202-9737



Accreditation #: 121747

This is a Phyto-Farma certification that relates only to the material tested and shall not be reproduced, unless in its entirety, without written approval from Phyto-Farma. Test results are confidential, unless explicitly waived. All Pass/Fail results please reference state regulations released on 01FEB2024. Pass/Fail results do not use uncertainty, but is available upon request. The product represented has been tested by Phyto-Farma Labs using validated scientific methodologies. Note action levels are state determined thresholds for human safety and consumption. Acronym Definitions: ND - Not Detected, LOQ - Limit of Quantification, ULOQ - Upper Limit of Quantification; are terms used to describe the reliably measured smallest and largest concentrations. <LOQ\* denotes the result is above detection limit, but below quantifiable limit. CFU - Colony Forming Units. Cannabis Product Sampling SOP# SOP.T.20.010.



**Mill Lane Chemist**  
 Address: 6309 Mill Lane, Brooklyn, NY 11234  
 Contact Name:  
 Contact Phone:  
 License #: OCM-PROC-24-000034  
 Sample ID: 2410SMNY0258.1074



**Phyto-Farma Labs**  
 a Smithers company

**CERTIFICATE OF ANALYSIS**

Permit #: OCM-CPL-00004

Certificate: 6957.1

**Microbial Impurities - MDG**

**Pass**

**Sample Analysis**

**Date:** 10/29/2024 03:19 PM

**SOP:** NYS.SOPT.40.273

**Analyzed By:** PCR

**Analyst:** Kristy Lee

Analyte	Microbial Type	LOQ (CFU/g)	Allowable Limit	Results	Pass/Fail
Shiga toxin-producing Escherichia coli	Bacterial	1	Not Detected	Not Detected	PASS
Salmonella species	Bacterial	1	Not Detected	Not Detected	PASS
Aspergillus flavus	Fungal	1	Not Detected	Not Detected	PASS
Aspergillus niger	Fungal	1	Not Detected	Not Detected	PASS
Aspergillus terreus	Fungal	1	Not Detected	Not Detected	PASS
Aspergillus fumigatus	Fungal	1	Not Detected	Not Detected	PASS

**Alicia Caruso-Thomas**

10/30/2024

*Alicia Caruso-Thomas*

Laboratory Director

**Phyto-Farma Labs**

49 John Hicks Drive  
 Warwick, NY 10990  
 (845) 202-9737



Accreditation #: 121747

This is a Phyto-Farma certification that relates only to the material tested and shall not be reproduced, unless in its entirety, without written approval from Phyto-Farma. Test results are confidential, unless explicitly waived. All Pass/Fail results please reference state regulations released on 01FEB2024. Pass/Fail results do not use uncertainty, but is available upon request. The product represented has been tested by Phyto-Farma Labs using validated scientific methodologies. Note action levels are state determined thresholds for human safety and consumption. Acronym Definitions: ND - Not Detected, LOQ - Limit of Quantification, ULOQ - Upper Limit of Quantification; are terms used to describe the reliably measured smallest and largest concentrations. <LOQ> denotes the result is above detection limit, but below quantifiable limit. CFU - Colony Forming Units. Cannabis Product Sampling SOP# SOP.T.20.010.



Mill Lane Chemist  
 Address: 6309 Mill Lane, Brooklyn, NY 11234  
 Contact Name:  
 Contact Phone:  
 License #: OCM-PROC-24-000034  
 Sample ID: 2410SMNY0258.1074



**Phyto-Farma Labs**  
 a Smithers company

**CERTIFICATE OF ANALYSIS**

Permit #: OCM-CPL-00004

Certificate: 6957.1

**Microbial Impurities - TAPC**

**Pass**

**Sample Analysis**

Date: 10/25/2024 04:22 PM      SOP: NYS.SOPT.040.200

Analyzed By: Plating

Analyst: Lindsey Vento

Analyte	LOQ (CFU/g)	Action Limit (CFU/g)	Results (CFU/g)	Pass/Fail
Total Aerobic Bacteria/CDP-TC	5	N/A	6900000	PASS

**Microbial Impurities - TYMC**

**Pass**

**Sample Analysis**

Date: 10/28/2024 12:21 PM      SOP: NYS.SOPT.040.200

Analyzed By: Plating

Analyst: Lindsey Vento

Analyte	LOQ (CFU/g)	Action Limit (CFU/g)	Results (CFU/g)	Pass/Fail
Total Yeast and Mold	5	N/A	350000	PASS
Mold Count	5	N/A	300000	PASS
Yeast Count	5	N/A	50000	PASS

Alicia Caruso-Thomas

10/30/2024

*Alicia Caruso-Thomas*

Laboratory Director

Phyto-Farma Labs

49 John Hicks Drive  
 Warwick, NY 10990  
 (845) 202-9737



PJLA  
 Testing  
 Accreditation #: 121747

This is a Phyto-Farma certification that relates only to the material tested and shall not be reproduced, unless in its entirety, without written approval from Phyto-Farma. Test results are confidential, unless explicitly waived. All Pass/Fail results please reference state regulations released on 01FEB2024. Pass/Fail results do not use uncertainty, but is available upon request. The product represented has been tested by Phyto-Farma Labs using validated scientific methodologies. Note action levels are state determined thresholds for human safety and consumption. Acronym Definitions: ND - Not Detected, LOQ - Limit of Quantification, ULOQ - Upper Limit of Quantification; are terms used to describe the reliably measured smallest and largest concentrations. <LOQ> denotes the result is above detection limit, but below quantifiable limit. CFU - Colony Forming Units. Cannabis Product Sampling SOP# SOP.T.20.010.



Mill Lane Chemist  
 Address: 6309 Mill Lane, Brooklyn, NY 11234  
 Contact Name:  
 Contact Phone:  
 License #: OCM-PROC-24-000034  
 Sample ID: 2410SMNY0258.1074

Certificate: 6957.1

### Foreign Matter

Pass

#### Sample Analysis

Date: 10/25/2024 11:08 AM      SOP: NYS.SOPT.040.250  
 Analyzed By: Microscopy  
 Analyst: Destiny Ribadeneyra

Analyte	LOQ	Action Limit	Results	Pass/Fail
Mammalian excreta (mg/lb)	0	1.0	0	PASS
Stems >3mm in diameter (%)	0	5.0	0	PASS
Other Foreign Material (%)	0	2.0	0	PASS

### Moisture Content

Pass

#### Sample Analysis

Date: 10/28/2024 02:08 PM      SOP: NY.SOPT.040.220  
 Analyzed By: Moisture Balance  
 Analyst: Stephanie Knapp

Analyte	LOQ (%)	Action Limit (%)	Results (%)	Pass/Fail
Moisture Content	0.0	5.0 - 15.0	9.7	PASS

### Water Activity

Pass

#### Sample Analysis

Date: 10/28/2024 02:21 PM      SOP: NY.SOPT.040.210  
 Analyzed By: Water Activity Meter  
 Analyst: Stephanie Knapp

Analyte	LOQ (Aw)	Action Limit (Aw)	Results (Aw)	Pass/Fail
Water Activity	0.25	0.65	0.33	PASS

Alicia Caruso-Thomas  
 Laboratory Director

10/30/2024  
*Alicia Caruso-Thomas*

Phyto-Farma Labs  
 49 John Hicks Drive  
 Warwick, NY 10990  
 (845) 202-9737



This is a Phyto-Farma certification that relates only to the material tested and shall not be reproduced, unless in its entirety, without written approval from Phyto-Farma. Test results are confidential, unless explicitly waived. All Pass/Fail results please reference state regulations released on 01FEB2024. Pass/Fail results do not use uncertainty, but is available upon request. The product represented has been tested by Phyto-Farma Labs using validated scientific methodologies. Note action levels are state determined thresholds for human safety and consumption. Acronym Definitions: ND - Not Detected, LOQ - Limit of Quantification, ULOQ - Upper Limit of Quantification; are terms used to describe the reliably measured smallest and largest concentrations. <LOQ\* denotes the result is above detection limit, but below quantifiable limit. CFU - Colony Forming Units. Cannabis Product Sampling SOP# SOP.T.20.010.