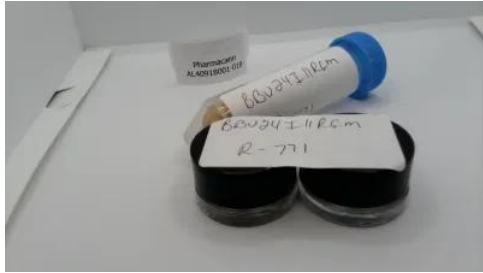




# Certificate of Analysis

## FOR COMPLIANCE

Laboratory Sample ID: AL40918001-018



**Production Method:** Butane  
**Harvest/Lot ID:** BBU24111RGM  
**Batch#:** BBU24111RGM  
**Sample Size Received:** 9 gram  
**Total Amount:** 1041 units  
**Retail Product Size:** 1 gram  
**Retail Serving Size:** .025 gram  
**Servings:** 40  
**Sampled:** 09/18/24 12:30 PM  
**Sampling Start:** 12:30 PM  
**Sampling End:** 12:55 PM  
**Sampling Method:** SOP.T.20.010.NY

Pharmacann  
License # : MM0101M  
14 Hudson Crossing Drive  
Montgomery , NY, 12549, US

**PASSED**

Pages 1 of 2

### SAFETY RESULTS



Pesticides  
**PASSED**



Heavy Metals  
**PASSED**



Microbials  
**PASSED**



Mycotoxins  
**PASSED**



Residuals  
Solvents  
**PASSED**



Filth  
**NOT TESTED**



Water Activity  
**NOT TESTED**



Moisture  
**NOT TESTED**

### MISC.



Terpenes  
**TESTED**



### Cannabinoid

**PASSED**



**Total THC**  
**74.0726%**  
Total THC/Container : 740.7260 mg



**Total CBD**  
**0.1681%**  
Total CBD/Container : 1.6810 mg



**Total Cannabinoids**  
**88.2809%**  
Total Cannabinoids/Container : 882.8090 mg

	(6AR,9R) D10-THC	(6AR,9S) D10-THC	CBC	CBD	CBDA	CBDV	CBG	D8-THC	CBGA	CBN	D9-THC	THCA	THCV
%	<0.1000	<0.1000	<0.1000	<0.1000	0.1917	<0.1000	0.4103	<0.1000	3.6898	<0.1000	3.3675	80.6216	<0.1000
mg/unit	<1.000	<1.000	<1.000	<1.000	1.917	<1.000	4.103	<1.000	36.898	<1.000	33.675	806.216	<1.000
LOQ	0.1000	0.1000	0.1000	0.1000	0.1000	0.1000	0.1000	0.1000	0.1000	0.1000	0.1000	0.1000	0.1000
	%	%	%	%	%	%	%	%	%	%	%	%	%

Weight:  
0.2474g

Analysis Method : SOP.T.30.031.NY, SOP.T.40.031.NY  
Analyzed Date : 09/23/24 15:13:19

This Kaycha Labs Certification shall not be reproduced, unless in its entirety, without written approval from Kaycha Labs. The results relate only to the material or product analyzed. ND=Not Detected, ppm=Parts Per Million, ppb=Parts Per Billion, RSD=Relative Standard Deviation. Limit of Detection (LOD) and Limit Of Quantitation (LOQ) are terms used to describe the smallest concentration that can be detected and reliably measured by an analytical procedure, respectively. Action Levels are State determined thresholds based on 9 New York Codes, Rules and Regulations (NYCRR) Part 130 and Cannabis Law. The Measurement of Uncertainty (MU) error is available from the lab upon request. The "Decision Rule" for pass/fail does not include the MU. Any calculated totals may contain rounding errors.

**Erica Troy**  
Lab Director

NY Permit # OCM-CPL-2022-00006  
ISO 17025 Accreditation # 97164



Signature  
10/04/24



# Certificate of Analysis

**PASSED**

**Pharmacann**

14 Hudson Crossing Drive  
Montgomery, NY, 12549, US  
Telephone: (845) 207-0101  
Email: douglas.desisto@pharmacann.com  
License #: MM0101M

Sample : AL40918001-018  
Harvest/Lot ID: BBU24I11RGM  
Batch#: BBU24I11RGM  
Sampled : 09/18/24 12:30 PM

Sample Size Received : 9 gram  
Total Amount : 1041 units  
Sampling Method : SOP.T.20.010.NY

Page 2 of 2

Terpenes				TESTED					
Terpenes	LOQ (%)	mg/unit	%	Result (%)	Terpenes	LOQ (%)	mg/unit	%	Result (%)
BETA-CARYOPHYLLENE	0.04	9.900	0.9900		BETA-CARYOPHYLLENE	0.04	9.900	0.9900	
LINALOOL	0.10	5.200	0.5200		LINALOOL	0.10	5.200	0.5200	
LIMONENE	0.10	4.900	0.4900		LIMONENE	0.10	4.900	0.4900	
ALPHA-HUMULENE	0.04	4.100	0.4100		ALPHA-HUMULENE	0.04	4.100	0.4100	
ALPHA-BISABOLOL	0.04	3.400	0.3400		ALPHA-BISABOLOL	0.04	3.400	0.3400	
ALPHA-TERPINEOL	0.04	1.200	0.1200		ALPHA-TERPINEOL	0.04	1.200	0.1200	
FENCHYL ALCOHOL	0.04	1.100	0.1100		FENCHYL ALCOHOL	0.04	1.100	0.1100	
CAMPHENE	0.10	<1.000	<0.1000		CAMPHENE	0.10	<1.000	<0.1000	
CARYOPHYLLENE OXIDE	0.04	<0.400	<0.0400		CARYOPHYLLENE OXIDE	0.04	<0.400	<0.0400	
FARNESENE	0.10	<1.000	<0.1000		FARNESENE	0.10	<1.000	<0.1000	
OCIMENE	0.10	<1.000	<0.1000		OCIMENE	0.10	<1.000	<0.1000	
TERPINOLENE	0.04	<0.400	<0.0400		TERPINOLENE	0.04	<0.400	<0.0400	
VALENCENE	0.10	<1.000	<0.1000		VALENCENE	0.10	<1.000	<0.1000	
ALPHA-PHELLANDRENE	0.10	<1.000	<0.1000		ALPHA-PHELLANDRENE	0.10	<1.000	<0.1000	
ALPHA-PINENE	0.10	<1.000	<0.1000		ALPHA-PINENE	0.10	<1.000	<0.1000	
ALPHA-TERPINENE	0.10	<1.000	<0.1000		ALPHA-TERPINENE	0.10	<1.000	<0.1000	
BETA-MYRCENE	0.10	<1.000	<0.1000		BETA-MYRCENE	0.10	<1.000	<0.1000	
BETA-PINENE	0.10	<1.000	<0.1000		BETA-PINENE	0.10	<1.000	<0.1000	
GERANIOL	0.04	<0.400	<0.0400		GERANIOL	0.04	<0.400	<0.0400	
GUAIOL	0.04	<0.400	<0.0400		GUAIOL	0.04	<0.400	<0.0400	
MENTHOL	0.10	<1.000	<0.1000		MENTHOL	0.10	<1.000	<0.1000	
<b>Total (%)</b>			<b>2.9800</b>		<b>Total (%)</b>			<b>2.9800</b>	

Weight:  
1.0308g  
Analysis Method : SOP.T.30.064.NY, SOP.T.40.064.NY  
Analyzed Date : 09/20/24 12:36:35