



Hudson Valley Hemp Company, LLC
Address: 67 Pine Wood Rd., Hudson, NY 12534
Contact Name:
Contact Phone:
License #: OCM-PROC-24-000208
Sample ID: 2502SMNY0088.0350



Phyto-Farma Labs
a Smithers company

CERTIFICATE OF ANALYSIS

Permit #: OCM-CPL-00004

Certificate: 8260.2

Sleep Drop Tins

Lot #: SLP5NY24245-T
Sample ID: 2502SMNY0088.0350
Regulatory Category: Adult Use
Received: 02/04/2025
Sampling Location: 67 PINE WOOD RD 1
Hudson, NY

Lot Size: 2400
Sample Type: Edible
Amount Received: 3
Sample Collected: 02/04/2025 11:14 AM
Published: 02/11/2025



COMPLIANCE FOR RETAIL

Cannabinoid Profile Pass	Terpenes Total Tested	Residual Solvents Pass	Pass Sample Status
Pesticides Pass	Mycotoxins Pass	Water Activity Pass	0.663% Total THC
Trace Metals Pass	Microbial Contaminants Pass	Moisture Analysis Not Tested	0.733% Total CBD
	Filth & Foreign Not Tested		1.79 % Total Cannabinoids

Report Notes: Amended: Corrected cannabinoid results.

Alicia Caruso-Thomas

Laboratory Director

02/11/2025

Alicia Caruso-Thomas

Phyto-Farma Labs

49 John Hicks Drive
Warwick, NY 10990
(845) 202-9737



Accreditation #: 121747

This is a Phyto-Farma certification that relates only to the material tested and shall not be reproduced, unless in its entirety, without written approval from Phyto-Farma. Test results are confidential, unless explicitly waived. All Pass/Fail results please reference state regulations released on 01FEB2024. Pass/Fail results do not use uncertainty, but is available upon request. The product represented has been tested by Phyto-Farma Labs using validated scientific methodologies. Note action levels are state determined thresholds for human safety and consumption. Acronym Definitions: ND - Not Detected, LOQ - Limit of Quantification, ULOQ - Upper Limit of Quantification; are terms used to describe the reliably measured smallest and largest concentrations. <LOQ* denotes the result is above detection limit, but below quantifiable limit. CFU - Colony Forming Units. Cannabis Product Sampling SOP# SOP.T.20.010.



Hudson Valley Hemp Company, LLC
Address: 67 Pine Wood Rd., Hudson, NY 12534
Contact Name:
Contact Phone:
License #: OCM-PROC-24-000208
Sample ID: 2502SMNY0088.0350



Phyto-Farma Labs
a Smithers company

CERTIFICATE OF ANALYSIS

Permit #: OCM-CPL-00004

Certificate: 8260.2

Average Cannabinoid Profile

Pass

Sample Analysis

Date: 02/10/2025 01:08 PM

SOP: NY.SOPT.40.260

Analyzed By: HPLC

Sample Weight: N/A

Analyst: Stephanie Knapp

Analyte	LOQ (%)	Average % (w/w)	mg/serving	Homogeneity [†]
Total Tetrahydrocannabinol (THC)	-	0.663	4.34	
Tetrahydrocannabinolic acid (THCA)	0.500	0.00165	0.0108	
Δ8-THC	0.500	<LOQ	<LOQ	
Δ9-THC	0.500	0.662	4.33	
Δ10-THC-RS	0.500	<LOQ	<LOQ	
Δ10-THC-RR	0.500	<LOQ	<LOQ	
Total Cannabidiol (CBD)	-	0.733	4.80	
Cannabinadiolic acid (CBDA)	0.500	0.00330	0.0216	
Cannabidiol (CBD)	0.500	0.731	4.78	
Total Active Tetrahydrocannabivarin (THCV)	-	0.00766	0.0501	
Tetrahydrocannabivarinic acid (THCVA)*	0.500	0.00206	0.0135	
Tetrahydrocannabivarin (THCV)	0.500	0.00587	0.0384	
Total Active Cannabigerol (CBG)	-	0.0350	0.229	
Cannabigerolic acid (CBGA)	0.500	0.00179	0.0117	
Cannabigerol (CBG)	0.500	0.0334	0.219	
Cannabidivarin (CBDV)	0.500	0.00728	0.0476	
Cannabinol (CBN)	0.500	0.331	2.16	
Cannabichromene (CBC)	0.500	0.0113	0.0737	

Cannabinoid Totals	Actual % (w/w)	mg/serving	Homogeneity [†]
Total Cannabinoids	1.79	11.7	

* Analyte is not included in ISO 17025 scope of accreditation

† Concentration of individual samples must be ±25% of the mean concentration

Total Active CBD = CBD + (0.877 x CBDA); Total Active CBG = CBG + (0.878 x CBGA);

Total Active THC = (Δ9THC + Δ8THC + Δ10THC-RS + Δ10THC-RR) + (0.877 x THCA);

Total Active THCV = THCV + (0.867 x THCVA);

Serving Weight: 0.654 g

Alicia Caruso-Thomas

02/11/2025

Alicia Caruso-Thomas

Laboratory Director

Phyto-Farma Labs

49 John Hicks Drive

Warwick, NY 10990

(845) 202-9737



Accreditation #: 121747

This is a Phyto-Farma certification that relates only to the material tested and shall not be reproduced, unless in its entirety, without written approval from Phyto-Farma. Test results are confidential, unless explicitly waived. All Pass/Fail results please reference state regulations released on 01FEB2024. Pass/Fail results do not use uncertainty, but is available upon request. The product represented has been tested by Phyto-Farma Labs using validated scientific methodologies. Note action levels are state determined thresholds for human safety and consumption. Acronym Definitions: ND - Not Detected, LOQ - Limit of Quantification, ULOQ - Upper Limit of Quantification; are terms used to describe the reliably measured smallest and largest concentrations. <LOQ* denotes the result is above detection limit, but below quantifiable limit. CFU - Colony Forming Units. Cannabis Product Sampling SOP# SOP.T.20.010.



Hudson Valley Hemp Company, LLC
Address: 67 Pine Wood Rd., Hudson, NY 12534
Contact Name:
Contact Phone:
License #: OCM-PROC-24-000208
Sample ID: 2502SMNY0088.0350

CERTIFICATE OF ANALYSIS
Permit #: OCM-CPL-00004

Certificate: 8260.2

Terpene Total

Tested (0.0000%)

Sample Analysis

Date: 02/06/2025 02:07 PM

SOP: NY.SOPT.40.090

Sample Weight: 0.1894 g

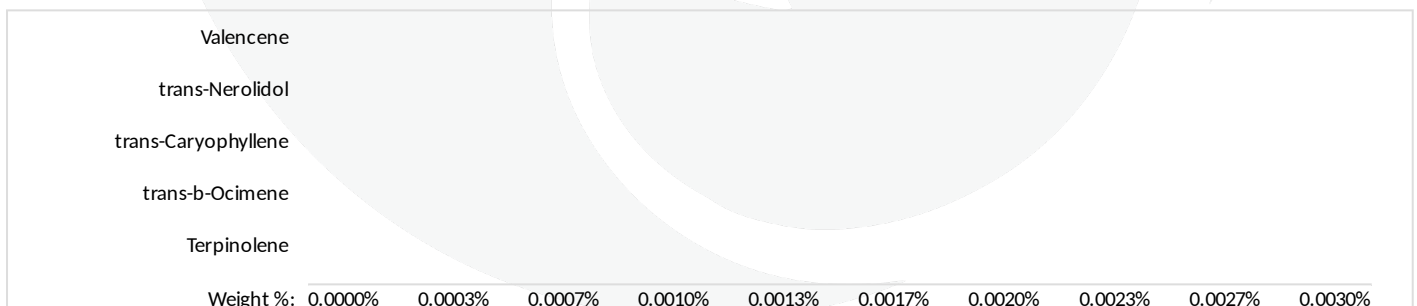
Analyzed By: GC-MS

Analyst: Stephanie Knapp

Analyte	LOQ (%)	Results (%)
3-Carene	0.0004200	<LOQ
alpha-Bisabolol	0.0005000	<LOQ
alpha-Humulene	0.0005600	<LOQ
alpha-Phellandrene	0.0006600	<LOQ
alpha-Pinene	0.0004800	<LOQ
alpha-Terpinene	0.0002600	<LOQ
alpha-Terpineol	0.0003400	<LOQ
beta-Myrcene	0.0006400	<LOQ
beta-Pinene	0.0006600	<LOQ
Borneol	0.0004600	<LOQ
Camphene	0.0004400	<LOQ
Camphor	0.0004000	<LOQ
Caryophyllene oxide	0.0005800	<LOQ
Cedrene	0.0004400	<LOQ
Cedrol	0.0005600	<LOQ
cis-Nerolidol	0.0006800	<LOQ
cis-Ocimene	0.0005200	<LOQ
Eucalyptol	0.0007200	<LOQ
Farnesene	0.0008400	<LOQ
Fenchone	0.0005000	<LOQ

Analyte	LOQ (%)	Results (%)
gamma-Terpinene	0.0004400	<LOQ
gamma-Terpineol	0.0003000	<LOQ
Geraniol	0.0004800	<LOQ
Geranyl acetate	0.0006200	<LOQ
Guaial	0.0006000	<LOQ
Isoborneol	0.0003400	<LOQ
Isopulegol	0.0006600	<LOQ
Limonene	0.0007400	<LOQ
Linalool	0.0004600	<LOQ
Menthol	0.0004600	<LOQ
Nerol	0.0005000	<LOQ
Pulegone (+)	0.0005600	<LOQ
Sabinene	0.0003400	<LOQ
Sabinene Hydrate	0.0004200	<LOQ
Terpinolene	0.0005000	<LOQ
trans-b-Ocimene	0.0004200	<LOQ
trans-Caryophyllene	0.0006600	<LOQ
trans-Nerolidol	0.0007200	<LOQ
Valencene	0.0005600	<LOQ

Terpene Totals	%	Pass/Fail
Total Terpenes	0	N/A



Alicia Caruso-Thomas

02/11/2025

Alicia Caruso-Thomas

Laboratory Director

Phyto-Farma Labs

49 John Hicks Drive
Warwick, NY 10990
(845) 202-9737



This is a Phyto-Farma certification that relates only to the material tested and shall not be reproduced, unless in its entirety, without written approval from Phyto-Farma. Test results are confidential, unless explicitly waived. All Pass/Fail results please reference state regulations released on 01FEB2024. Pass/Fail results do not use uncertainty, but is available upon request. The product represented has been tested by Phyto-Farma Labs using validated scientific methodologies. Note action levels are state determined thresholds for human safety and consumption. Acronym Definitions: ND - Not Detected, LOQ - Limit of Quantification, ULOQ - Upper Limit of Quantification; are terms used to describe the reliably measured smallest and largest concentrations. <LOQ* denotes the result is above detection limit, but below quantifiable limit. CFU - Colony Forming Units. Cannabis Product Sampling SOP# SOP.T.20.010.



Hudson Valley Hemp Company, LLC
Address: 67 Pine Wood Rd., Hudson, NY 12534
Contact Name:
Contact Phone:
License #: OCM-PROC-24-000208
Sample ID: 2502SMNY0088.0350



Phyto-Farma Labs
a Smithers company

CERTIFICATE OF ANALYSIS

Permit #: OCM-CPL-00004

Certificate: 8260.2

Trace Metals

Pass

Sample Analysis

Date: 02/10/2025 12:19 PM

SOP: NY.SOPT.40.050

Analyzed By: ICP-MS

Sample Weight: 0.1227 g

Analyst: Moni Kaneti

Analyte	LOQ (µg/g)	Action Limit (µg/g)	Results (µg/g)	Pass/Fail
Antimony (Sb)*	0.315	120	<LOQ	PASS
Arsenic (As)*	0.180	1.50	<LOQ	PASS
Cadmium (Cd)*	0.159	0.500	<LOQ	PASS
Chromium (Cr)*	0.891	1100	<LOQ	PASS
Copper (Cu)*	0.984	300	<LOQ	PASS
Lead (Pb)*	0.195	0.500	<LOQ	PASS
Mercury (Hg)*	0.0330	3.00	<LOQ	PASS
Nickel (Ni)*	0.273	20.0	<LOQ	PASS

* Analyte is not included in ISO 17025 scope of accreditation

Mycotoxin Analysis

Pass

Sample Analysis

Date: 02/07/2025 10:22 AM

SOP: NY.SOPT.40.180

Analyzed By: LC-MS/MS

Sample Weight: 0.1 g

Analyst: Destiny Ribadeneyra

Analyte	LOQ (µg/g)	Action Limit (µg/g)	Results (µg/g)	Pass/Fail
Sum of Aflatoxins	-	0.020	0	PASS
Aflatoxin B1	0.0010	0.020	<LOQ	PASS
Aflatoxin B2	0.0020	0.020	<LOQ	PASS
Aflatoxin G1	0.0010	0.020	<LOQ	PASS
Aflatoxin G2	0.0020	0.020	<LOQ	PASS
Ochratoxin A	0.0020	0.020	<LOQ	PASS

Alicia Caruso-Thomas

02/11/2025

Alicia Caruso-Thomas

Laboratory Director

Phyto-Farma Labs

49 John Hicks Drive
Warwick, NY 10990
(845) 202-9737



Accreditation #: 121747

This is a Phyto-Farma certification that relates only to the material tested and shall not be reproduced, unless in its entirety, without written approval from Phyto-Farma. Test results are confidential, unless explicitly waived. All Pass/Fail results please reference state regulations released on 01FEB2024. Pass/Fail results do not use uncertainty, but is available upon request. The product represented has been tested by Phyto-Farma Labs using validated scientific methodologies. Note action levels are state determined thresholds for human safety and consumption. Acronym Definitions: ND - Not Detected, LOQ - Limit of Quantification, ULOQ - Upper Limit of Quantification; are terms used to describe the reliably measured smallest and largest concentrations. <LOQ* denotes the result is above detection limit, but below quantifiable limit. CFU - Colony Forming Units. Cannabis Product Sampling SOP# SOP.T.20.010.



Hudson Valley Hemp Company, LLC
Address: 67 Pine Wood Rd., Hudson, NY 12534
Contact Name:
Contact Phone:
License #: OCM-PROC-24-000208
Sample ID: 2502SMNY0088.0350



Phyto-Farma Labs
a Smithers company

CERTIFICATE OF ANALYSIS

Permit #: OCM-CPL-00004

Certificate: 8260.2

Pesticides LC

Pass

Sample Analysis

Date: 02/06/2025 01:38 PM

SOP: NY.SOPT.040.270

Analyzed By: LC-MS/MS

Sample Weight: 1 g

Analyst: Destiny Ribadeneyra

Analyte	LOQ (ppm)	Action Limit (ppm)	Results (ppm)	Pass/Fail
Abamectin*	0.0180	0.500	<LOQ	PASS
Acephate*	0.00700	0.400	<LOQ	PASS
Acequinocyl*	0.0160	2.00	<LOQ	PASS
Acetamiprid*	0.00500	0.200	<LOQ	PASS
Aldicarb*	0.00500	0.400	<LOQ	PASS
Azadirachtin*	0.0220	1.00	<LOQ	PASS
Azoxystrobin*	0.00600	0.200	<LOQ	PASS
Bifenazate*	0.00600	0.200	<LOQ	PASS
Bifenthrin*	0.00300	0.200	<LOQ	PASS
Boscalid*	0.0110	0.400	<LOQ	PASS
Carbaryl*	0.00600	0.200	<LOQ	PASS
Carbofuran*	0.00500	0.200	<LOQ	PASS
Chlorantraniliprole*	0.00600	0.200	<LOQ	PASS
Chloromequat chloride*	0.0190	1.00	<LOQ	PASS
Chlorpyrifos*	0.00900	0.200	<LOQ	PASS
Clofentezine*	0.0100	0.200	<LOQ	PASS
Daminozide*	0.00400	1.00	<LOQ	PASS
Diazinon*	0.00700	0.200	<LOQ	PASS
Dichlorvos*	0.0120	1.00	<LOQ	PASS
Dimethoate*	0.00600	0.200	<LOQ	PASS
Dimethomorph*	0.00500	1.00	<LOQ	PASS
Ethoprophos*	0.0130	0.200	<LOQ	PASS
Etofenprox*	0.00300	0.400	<LOQ	PASS
Etoazole*	0.00500	0.200	<LOQ	PASS
Fenhexamid*	0.0150	1.00	<LOQ	PASS
Fenoxycarb*	0.0110	0.200	<LOQ	PASS
Fenpyroximate*	0.00200	0.400	<LOQ	PASS
Flonicamid*	0.00700	1.00	<LOQ	PASS
Fludioxonil*	0.0170	0.400	<LOQ	PASS
Hexythiazox*	0.00500	1.00	<LOQ	PASS

Analyte	LOQ (ppm)	Action Limit (ppm)	Results (ppm)	Pass/Fail
Imidacloprid*	0.00800	0.400	<LOQ	PASS
Indole-3-butyric acid*	0.00700	1.00	<LOQ	PASS
Kresoxim methyl*	0.0120	0.400	<LOQ	PASS
Malathion*	0.0110	0.200	<LOQ	PASS
Metalaxyl*	0.0120	0.200	<LOQ	PASS
Methiocarb*	0.00400	0.200	<LOQ	PASS
Methomyl*	0.0120	0.400	<LOQ	PASS
Mevinphos*	0.0190	1.00	<LOQ	PASS
MGK-264*	0.0110	0.200	<LOQ	PASS
Myclobutanil*	0.0130	0.200	<LOQ	PASS
Naled*	0.00500	0.500	<LOQ	PASS
Oxamyl*	0.00800	1.00	<LOQ	PASS
Paclobutrazol*	0.0150	0.400	<LOQ	PASS
Permethrins, Total*	0.00900	0.200	<LOQ	PASS
Phosmet*	0.00700	0.200	<LOQ	PASS
Piperonyl Butoxide*	0.00600	2.00	<LOQ	PASS
Prallethrin*	0.00800	0.200	<LOQ	PASS
Propiconazole*	0.00600	0.400	<LOQ	PASS
Propoxur*	0.00800	0.200	<LOQ	PASS
Pyrethrins*	0.0140	1.00	<LOQ	PASS
Pyridaben*	0.00600	0.200	<LOQ	PASS
Spinetoram, Total*	0.00500	1.00	<LOQ	PASS
Spinosad, Total*	0.00600	0.200	<LOQ	PASS
Spiromesifen*	0.0130	0.200	<LOQ	PASS
Spirotetramat*	0.00600	0.200	<LOQ	PASS
Spiroxamine*	0.00400	0.200	<LOQ	PASS
Tebuconazole*	0.0120	0.400	<LOQ	PASS
Thiacloprid*	0.00800	0.200	<LOQ	PASS
Thiamethoxam*	0.00800	0.200	<LOQ	PASS

* Analyte is not included in ISO 17025 scope of accreditation

Alicia Caruso-Thomas

02/11/2025

Alicia Caruso-Thomas

Laboratory Director

Phyto-Farma Labs

49 John Hicks Drive
Warwick, NY 10990
(845) 202-9737



Accreditation #: 121747

This is a Phyto-Farma certification that relates only to the material tested and shall not be reproduced, unless in its entirety, without written approval from Phyto-Farma. Test results are confidential, unless explicitly waived. All Pass/Fail results please reference state regulations released on 01FEB2024. Pass/Fail results do not use uncertainty, but is available upon request. The product represented has been tested by Phyto-Farma Labs using validated scientific methodologies. Note action levels are state determined thresholds for human safety and consumption. Acronym Definitions: ND - Not Detected, LOQ - Limit of Quantification, ULOQ - Upper Limit of Quantification; are terms used to describe the reliably measured smallest and largest concentrations. <LOQ* denotes the result is above detection limit, but below quantifiable limit. CFU - Colony Forming Units. Cannabis Product Sampling SOP# SOP.T.20.010.



Hudson Valley Hemp Company, LLC
Address: 67 Pine Wood Rd., Hudson, NY 12534
Contact Name:
Contact Phone:
License #: OCM-PROC-24-000208
Sample ID: 2502SMNY0088.0350



Phyto-Farma Labs
a Smithers company

CERTIFICATE OF ANALYSIS

Permit #: OCM-CPL-00004

Certificate: 8260.2

Pesticides GC

Pass

Sample Analysis

Date: 02/07/2025 11:55 AM

SOP: NYS.SOPT.040.271

Analyzed By: GC-MS/MS

Sample Weight: N/A

Analyst: Destiny Ribadeneyra

Analyte	LOQ (ppm)	Action Limit (ppm)	Results (ppm)	Pass/Fail
Captan*	0.300	1.00	<LOQ	PASS
Chlordane*	0.0700	1.00	<LOQ	PASS
Chlorfenapyr*	0.100	1.00	<LOQ	PASS
Coumaphos*	0.190	1.00	<LOQ	PASS
Cyfluthrin*	0.110	1.00	<LOQ	PASS
Cypermethrin*	0.240	1.00	<LOQ	PASS
Fipronil*	0.170	0.400	<LOQ	PASS
Imazalil*	0.170	0.200	<LOQ	PASS
Methyl parathion*	0.0900	0.200	<LOQ	PASS
Pentachloronitrobenzene*	0.170	1.00	<LOQ	PASS
Trifloxystrobin*	0.110	0.200	<LOQ	PASS

* Analyte is not included in ISO 17025 scope of accreditation

Alicia Caruso-Thomas

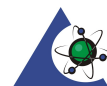
02/11/2025

Alicia Caruso-Thomas

Laboratory Director

Phyto-Farma Labs

49 John Hicks Drive
Warwick, NY 10990
(845) 202-9737



Accreditation #: 121747

This is a Phyto-Farma certification that relates only to the material tested and shall not be reproduced, unless in its entirety, without written approval from Phyto-Farma. Test results are confidential, unless explicitly waived. All Pass/Fail results please reference state regulations released on 01FEB2024. Pass/Fail results do not use uncertainty, but is available upon request. The product represented has been tested by Phyto-Farma Labs using validated scientific methodologies. Note action levels are state determined thresholds for human safety and consumption. Acronym Definitions: ND - Not Detected, LOQ - Limit of Quantification, ULOQ - Upper Limit of Quantification; are terms used to describe the reliably measured smallest and largest concentrations. <LOQ* denotes the result is above detection limit, but below quantifiable limit. CFU - Colony Forming Units. Cannabis Product Sampling SOP# SOP.T.20.010.



Hudson Valley Hemp Company, LLC
Address: 67 Pine Wood Rd., Hudson, NY 12534
Contact Name:
Contact Phone:
License #: OCM-PROC-24-000208
Sample ID: 2502SMNY0088.0350



Phyto-Farma Labs
a Smithers company

CERTIFICATE OF ANALYSIS

Permit #: OCM-CPL-00004

Certificate: 8260.2

Residual Solvents

Pass

Sample Analysis

Date: 02/06/2025 03:11 PM

SOP: NYS.SOPT.040.272

Analyzed By: GC-MS

Sample Weight: 0.0985 g

Analyst: Stephanie Knapp

Analyte	LOQ (ppm)	Action Limit (ppm)	Results (ppm)	Pass/Fail
1,2-Dichloroethane (Ethylene dichloride, Ethylene chloride)	0.100	5.00	<LOQ	PASS
2-Propanol (Isopropanol, Isopropyl alcohol)	125	5000	<LOQ	PASS
Acetone (2-Propanone)	125	5000	<LOQ	PASS
Acetonitrile	23.6	410	<LOQ	PASS
Benzene	0.100	2.00	<LOQ	PASS
Butanes, Total	62.5	5000	<LOQ	PASS
Chloroform	1.50	60.0	<LOQ	PASS
Dichloromethane (Methylene chloride)	15.0	600	<LOQ	PASS
Dimethyl sulfoxide (DMSO)	125	5000	<LOQ	PASS
Ethanol (Ethyl alcohol)	125	5000	<LOQ	PASS
Ethyl acetate (Acetic acid ethyl ester)	125	5000	<LOQ	PASS
Ethyl ether (Diethyl ether, 1,1'-Oxybisethane)	125	5000	<LOQ	PASS
Heptane (n-Heptane)	125	5000	<LOQ	PASS
Hexanes, Total	14.5	290	<LOQ	PASS
Methanol (Methyl alcohol)	75.1	3000	<LOQ	PASS
Pentanes, Total	195	5000	<LOQ	PASS
Propane	63.0	5000	<LOQ	PASS
Toluene (Methylbenzene)	22.3	890	<LOQ	PASS
Trichloroethane (1,1,1-)	37.6	1500	<LOQ	PASS
Tetrafluoroethane (1,1,1,2-) (HFC134a)*	10.0	1000	<LOQ	PASS
Xylenes, Total (ortho-, meta-, para-)	109	2170	<LOQ	PASS

* Analyte is not included in ISO 17025 scope of accreditation

Alicia Caruso-Thomas

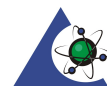
02/11/2025

Alicia Caruso-Thomas

Laboratory Director

Phyto-Farma Labs

49 John Hicks Drive
Warwick, NY 10990
(845) 202-9737



Accreditation #: 121747

This is a Phyto-Farma certification that relates only to the material tested and shall not be reproduced, unless in its entirety, without written approval from Phyto-Farma. Test results are confidential, unless explicitly waived. All Pass/Fail results please reference state regulations released on 01FEB2024. Pass/Fail results do not use uncertainty, but is available upon request. The product represented has been tested by Phyto-Farma Labs using validated scientific methodologies. Note action levels are state determined thresholds for human safety and consumption. Acronym Definitions: ND - Not Detected, LOQ - Limit of Quantification, ULOQ - Upper Limit of Quantification; are terms used to describe the reliably measured smallest and largest concentrations. <LOQ* denotes the result is above detection limit, but below quantifiable limit. CFU - Colony Forming Units. Cannabis Product Sampling SOP# SOP.T.20.010.



Hudson Valley Hemp Company, LLC
Address: 67 Pine Wood Rd., Hudson, NY 12534
Contact Name:
Contact Phone:
License #: OCM-PROC-24-000208
Sample ID: 2502SMNY0088.0350

CERTIFICATE OF ANALYSIS
Permit #: OCM-CPL-00004

Certificate: 8260.2

Microbial Impurities - MDG

Pass

Sample Analysis

Date: 02/07/2025 10:00 AM

SOP: NYS.SOPT.40.273

Analyzed By: PCR

Analyst: Kristy Lee

Analyte	Microbial Type	LOQ (CFU/g)	Allowable Limit	Results	Pass/Fail
Shiga toxin-producing Escherichia coli	Bacterial	1	Not Detected	Not Detected	PASS
Salmonella species	Bacterial	1	Not Detected	Not Detected	PASS
Aspergillus flavus	Fungal	1	Not Detected	Not Detected	PASS
Aspergillus niger	Fungal	1	Not Detected	Not Detected	PASS
Aspergillus terreus	Fungal	1	Not Detected	Not Detected	PASS
Aspergillus fumigatus	Fungal	1	Not Detected	Not Detected	PASS

Alicia Caruso-Thomas

Laboratory Director

02/11/2025

Alicia Caruso-Thomas

Phyto-Farma Labs

49 John Hicks Drive
Warwick, NY 10990
(845) 202-9737



Accreditation #: 121747

This is a Phyto-Farma certification that relates only to the material tested and shall not be reproduced, unless in its entirety, without written approval from Phyto-Farma. Test results are confidential, unless explicitly waived. All Pass/Fail results please reference state regulations released on 01FEB2024. Pass/Fail results do not use uncertainty, but is available upon request. The product represented has been tested by Phyto-Farma Labs using validated scientific methodologies. Note action levels are state determined thresholds for human safety and consumption. Acronym Definitions: ND - Not Detected, LOQ - Limit of Quantification, ULOQ - Upper Limit of Quantification; are terms used to describe the reliably measured smallest and largest concentrations. <LOQ* denotes the result is above detection limit, but below quantifiable limit. CFU - Colony Forming Units. Cannabis Product Sampling SOP# SOP.T.20.010.



Hudson Valley Hemp Company, LLC
Address: 67 Pine Wood Rd., Hudson, NY 12534
Contact Name:
Contact Phone:
License #: OCM-PROC-24-000208
Sample ID: 2502SMNY0088.0350



Phyto-Farma Labs
a Smithers company

CERTIFICATE OF ANALYSIS

Permit #: OCM-CPL-00004

Certificate: 8260.2

Microbial Impurities - TAPC

Pass

Sample Analysis

Date: 02/05/2025 04:41 PM

SOP: NYS.SOPT.040.200

Analyzed By: Plating

Analyst: Kristy Lee

Analyte	LOQ (CFU/g)	Action Limit (CFU/g)	Results (CFU/g)	Pass/Fail
Total Aerobic Bacteria/CDP-TC	5	10000	<LOQ	PASS

Microbial Impurities - TYMC

Pass

Sample Analysis

Date: 02/07/2025 04:29 PM

SOP: NYS.SOPT.040.200

Analyzed By: Plating

Analyst: Kristy Lee

Analyte	LOQ (CFU/g)	Action Limit (CFU/g)	Results (CFU/g)	Pass/Fail
Total Yeast and Mold	5	1000	<LOQ	PASS
Mold Count	5	1000	<LOQ	PASS
Yeast Count	5	1000	<LOQ	PASS

Water Activity

Pass

Sample Analysis

Date: 02/05/2025 02:19 PM

SOP: NY.SOPT.040.210

Analyzed By: Water Activity Meter

Analyst: Destiny Ribadeneyra

Analyte	LOQ (Aw)	Action Limit (Aw)	Results (Aw)	Pass/Fail
Water Activity	0.25	0.85	0.33	PASS

Alicia Caruso-Thomas

02/11/2025

Alicia Caruso-Thomas

Laboratory Director

Phyto-Farma Labs

49 John Hicks Drive
Warwick, NY 10990
(845) 202-9737



This is a Phyto-Farma certification that relates only to the material tested and shall not be reproduced, unless in its entirety, without written approval from Phyto-Farma. Test results are confidential, unless explicitly waived. All Pass/Fail results please reference state regulations released on 01FEB2024. Pass/Fail results do not use uncertainty, but is available upon request. The product represented has been tested by Phyto-Farma Labs using validated scientific methodologies. Note action levels are state determined thresholds for human safety and consumption. Acronym Definitions: ND - Not Detected, LOQ - Limit of Quantification, ULOQ - Upper Limit of Quantification; are terms used to describe the reliably measured smallest and largest concentrations. <LOQ* denotes the result is above detection limit, but below quantifiable limit. CFU - Colony Forming Units. Cannabis Product Sampling SOP# SOP.T.20.010.